

28 October 2015

ST GEORGE HITS VERY THICK MINERALISED ULTRAMAFIC AT WINDSOR

HIGHLIGHTS:

- Six drill holes completed at Windsor
- Thick intervals of high MgO ultramafic intersected including a very thick 215m in WINRC016
- Disseminated nickel sulphides intersected including values up to 0.73% Ni in WINRC011
- Drilling confirms the mineralised ultramafic extends both north and south of discovery hole DRAC38
- Drilling to test the basal contact at Windsor continues

DRILLING PROVIDES FURTHER SUPPORT FOR MASSIVE NICKEL SULPHIDES AT WINDSOR

St George Mining Limited (ASX: **SGQ**) ('St George Mining' or 'the Company') is pleased to provide an update on the major nickel sulphide drilling campaign underway at its 100% owned East Laverton Property in Western Australia.

Six drill holes have been completed so far at the Windsor nickel sulphide prospect for a total of 1,998m of drilling. The latest drill hole completed, WINRC016, intersected a very thick 215m interval of high MgO ultramafic from 58m to 273m with elevated nickel values identified by interim XRF analysis.

John Prineas, Executive Chairman of St George Mining, said:

"The drilling at Windsor continues to deliver thick ultramafic intersections with widespread occurrences of disseminated nickel sulphides.

"This is a textbook setting for a massive nickel sulphide deposit, and it gives us confidence that our systematic exploration at Windsor can result in significant exploration success."

The completed drill holes with interim observations are noted below:

Hole I/D	Depth	Observations
WINRC010	468m	Three ultramafic units intersected including a 69m thick high MgO ultramafic between 87m and 156m with some disseminated nickel sulphides
WINRC011	223m	116m of high MgO ultramafic, with broad disseminated nickel sulphides up to 0.73%Ni from XRF analysis
WINRC013	349m	Two ultramafic units from 66-72m and 205-214m. Zinc-rich footwall sediments from 133-174m and 267-283m
WINRC014	355m	Four ultramafic units from 71-78m, 106-110m, 189-217m and 249-265m
WINRC015	253m	Two ultramafic units from 96-131m and 141-145m. Zn-rich footwall sediment from 227-237m
WINRC016	349m	Very thick high MgO ultramafic from 58-273m. Multiple sections of disseminated nickel sulphides with thickest section from 169-181m

The drilling of WINRC012 is now underway. The initial attempt to drill this hole was discontinued at 72m depth due to excessive ground water discharge that caused the hole collar to collapse. The new drill hole will be cased to a deeper level to ensure stability of the hole.

SUCCESSFUL EXPLORATION AT WINDSOR

The first ever nickel sulphides identified at Windsor were in drill hole DRAC38, which was completed by BHP Billiton Nickel West in 2012. This drill hole intersected 30m @ 0.31%Ni from 108m, **including 8m @ 0.44%Ni from 130m and 2m @ 0.62%Ni from 132m.**

A further six drill holes completed at Windsor by St George in 2014 defined the large high MgO komatiite ultramafic unit which is open laterally and at depth. The unit is interpreted to extend over 2km with only 200m tested by drilling so far.

The current drilling by St George has further confirmed that the mineralised ultramafic at Windsor extends both to the north and south of the DRAC38 discovery hole. Figure 1 is a plan view of the drill holes at Windsor and illustrates the successful step-out drilling.

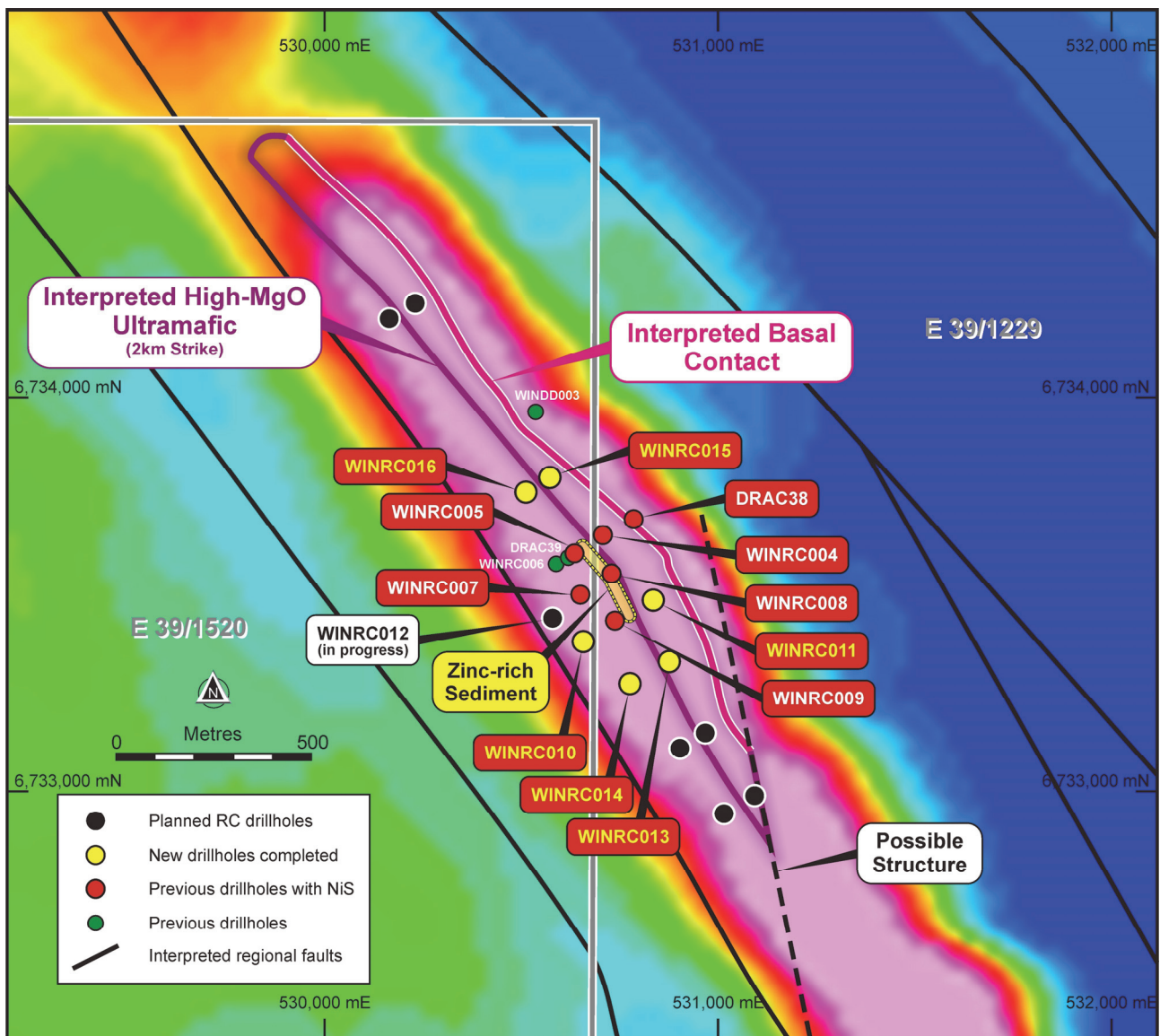


Figure 1 – interpreted ultramafic at Windsor against magnetics showing the successful nickel sulphide drill holes and the planned drill holes for the current drilling programme.

Nickel sulphides have now been identified in drill holes completed both to the north and south of the DRAC38 section. A conclusive determination of the metal content in the drill holes will be confirmed as the processing of the holes is finalised and when laboratory assays are available.

The widespread occurrences of disseminated nickel sulphides and PGE sulphide enrichment strongly support the potential for massive nickel sulphide mineralisation at Windsor. The nickel sulphides may have accumulated on the basal contact or may have been remobilised into secondary structural traps.

All drill holes are being cased with PVC-piping to facilitate downhole electromagnetic (DHEM) surveys that will test for conductive bodies, laterally or at depth from the completed holes, which may represent massive nickel sulphide accumulations.

The DHEM surveys will be carried out once all drill holes at Windsor are completed, expected to be in approximately 15 days. While the DHEM surveys are being conducted, the drill rig will move north to Desert Dragon to commence drill testing of priority EM targets. A further announcement regarding these highly prospective EM conductors will be made shortly.

The drill rig will remain available to return to Windsor for drill testing of any conductors identified in the DHEM surveys.



Figure 2 – Drill rig at hole WINRC014

XRF ANALYSIS

References to XRF results relate to analysis using a hand-held Olympus Innov-X Spectrum Analyser. This portable device provides immediate analysis of modal mineralogy of drill samples. The device is unable to reliably detect precious metals in samples but is considered to be more reliable for base metal assessment.

Unless otherwise stated, values determined by XRF analysis are based on one spot reading per one metre of drill samples. As such, results from XRF analysis are stated as indicative only and are preliminary to subsequent confirmation by geochemical analysis at Intertek Genalysis Laboratories.

The XRF data is useful in assisting in the interpretation of the geological character of the rocks being encountered during drilling. The data may not be representative of the actual metal content in that sample.

For further information, please contact:

John Prineas

Executive Chairman
St George Mining Limited
(+61) 411 421 253
John.prineas@stgm.com.au

Colin Hay

Professional Public Relations
(+61) 08 9388 0944 mob 0404 683 355
colin.hay@ppr.com.au

Competent Person Statement:

The information in this report that relates to Exploration Targets, Exploration Results, Mineral Resources or Ore Reserves is based on information compiled by Mr Timothy Hronsky, a Competent Person who is a Member of The Australasian Institute of Mining and Metallurgy. Mr Hronsky is employed by Essential Risk Solutions Ltd which has been retained by St George Mining Limited to provide technical advice on mineral projects.

Mr Hronsky has sufficient experience that is relevant to the style of mineralisation and type of deposit under consideration and to the activity being undertaken to qualify as a Competent Person as defined in the 2012 Edition of the 'Australasian Code for Reporting of Exploration Results, Mineral Resources and Ore Reserves'. Mr Hronsky consents to the inclusion in the report of the matters based on his information in the form and context in which it appears.

The following section is provided for compliance with requirements for the reporting of exploration results under the JORC Code, 2012 Edition.

Section 1 Sampling Techniques and Data

(Criteria in this section apply to all succeeding sections)

Criteria	JORC Code explanation	Commentary
Sampling techniques	<i>Nature and quality of sampling (eg cut channels, random chips, or specific specialised industry standard measurement tools appropriate to the minerals under investigation, such as down hole gamma sondes, or handheld XRF instruments, etc). These examples should not be taken as limiting the broad meaning of sampling.</i>	<p>This ASX Release dated 28 October 2015 reports on interim results from the latest drilling campaign at the Company’s East Laverton Project, and includes a discussion of some past exploration results particularly drilling programs and electromagnetic surveys completed recently at the Project.</p> <p>Drilling programs have included diamond core drilling completed by DDH1 Drilling Pty Ltd and reverse circulation (RC) drilling completed by VM Drilling Pty Ltd.</p> <p>Diamond drilling was undertaken by DDH1 in 2014 and 2015 using a Sandvik 1200 Multipurpose truck mounted drill rig. RC drilling was undertaken by VM Drilling in 2014 using a Schramm 685 truck mounted drill rig. The current RC drilling program will also be carried out by VM Drilling using the same rig.</p> <p><i>Diamond Core Sampling:</i> The core is removed from the drill rig and laid out for initial analysis in the field. The core is measured and marked up at 1m intervals against the drillers blocks, which are themselves checked against the drillers log books where required. The visible structural features on the core are measured against the core-orientation lines.</p> <p>Onsite XRF analysis is conducted using a hand-held Olympus Innov-X Spectrum Analyser. The XRF analysis is used to systematically review diamond drill core, with a single reading taken every metre, except in the case of core loss. These results are only used for onsite interpretation and preliminary base metal assessment subject to final geochemical analysis by laboratory assays.</p> <p>The sections of the core that are selected for assaying are marked up and recorded on a “cut-sheet” which provides a control on the intervals that will be cut and sampled at a duly certified assay laboratory. Core is prepared for analysis at 1m intervals or at lesser intervals of geological significance. Core is cut in half lengthways and then numbered samples are taken as per the “cut-sheet”.</p> <p>Diamond core provides high quality samples that are logged for lithological, structural, geotechnical, density and other attributes. Sampling is under QAQC procedures as per industry best practice.</p> <p><i>RC Sampling:</i> All samples from the RC drilling are taken as 1m samples. Samples are sent to Intertek Laboratories for assaying.</p> <p>Appropriate QAQC samples (standards, blanks and duplicates) are inserted into the sequences as per industry best practice.</p> <p>Samples are collected using cone or riffle splitter. Geological logging of RC chips is completed at site with representative chips being stored in drill chip trays.</p> <p>Onsite XRF analysis is conducted on the fines from RC chips using a hand-held Olympus Innov-X Spectrum Analyser. These results are only used for onsite interpretation and preliminary assessment subject to final geochemical analysis by laboratory assays.</p> <p><i>Moving loop electromagnetic (MLEM) survey:</i> The MLEM survey is designed and managed by Newexco, with field work contracted to Bushgum Pty Ltd. The MLEM survey is conducted at several prospects within the project area.</p> <p>Key specifications of the MLEM survey are:</p>

Criteria	JORC Code explanation	Commentary
		<p>Stations Spacing: 100m</p> <p>Loop: 400m, 200m</p> <p>Line Spacing: 400m</p> <p>Components: x y z</p> <p>Orientation: X along line (local east - positive).</p> <p>Line direction: 58.35, 90 degrees</p> <p>Frequency: 0.5, 0.25 Hz</p> <p>Channels: SMARTem Standard.</p> <p>Receiver: Fluxgate</p> <p>Number turns: 1</p> <p>Current: Typically 50 A.</p> <p>Repeats: Minimum 3 consistent readings per station.</p> <p><i>Down-hole electromagnetic (DHEM) survey:</i> A DHEM survey will be completed for certain drill holes. The DHEM survey is designed and managed by Newexco Services Pty Ltd, with field work contracted to Bushgum Holdings Pty Ltd.</p> <p>Key specifications of the DHEM survey are:</p> <p><i>System:</i> Atlantis (analogue)</p> <p><i>Components:</i> A, U, V</p> <p><i>Component direction:</i></p> <ul style="list-style-type: none"> • Ba – Parallel to hole axis, positive up hole. • Bu – Perpendicular to hole axis: toward 12 o’ clock when looking down hole. • Bv – Perpendicular to hole axis: toward 9 o’ clock when looking down hole.
	<p><i>Include reference to measures taken to ensure sample representivity and the appropriate calibration of any measurement tools or systems used.</i></p>	<p><i>Diamond Core Sampling:</i> For diamond core samples, certified sample standards were added as every 25th sample. Core recovery calculations are made through a reconciliation of the actual core and the driller’s records. Downhole surveys of dip and azimuth were conducted using a single shot camera every 30m to detect deviations of the hole from the planned dip and azimuth. The drill-hole collar locations were recorded using a hand held GPS, which has an accuracy of +/- 5m. At a later date the drill-hole collar will be surveyed to a greater degree of accuracy.</p> <p><i>RC Sampling:</i> The RC drilling rig has a cone splitter built into the cyclone on the rig. Samples are taken on a one meter basis and collected directly from the splitter into uniquely numbered calico bags. The calico bag contains a representative sample from the drill return for that metre. This results in a representative sample being taken from drill return, for that metre of drilling. The remaining majority of the sample return for that metre is collected and stored in a green plastic bag marked with that specific metre interval. The cyclone is blown through with compressed air after each plastic and calico sample bag is removed. If wet sample or clays are encountered then the cyclone is opened and cleaned manually and with the aid of a compressed air gun.</p> <p>A large auxiliary compressor (“air-pack”) is mounted on a separate truck and the airstream is connected to the rig. This provides an addition to the compressed air supplied by the in-built compressors mounted on the drill rig itself. This auxiliary compressor maximises the sample return through restricting air pressure loss, especially in deeper holes. In addition, the high and consistent levels of air</p>

Criteria	JORC Code explanation	Commentary
	<p><i>Aspects of the determination of mineralisation that are Material to the Public Report.</i></p> <p><i>In cases where 'industry standard' work has been done this would be relatively simple (eg 'reverse circulation drilling was used to obtain 1 m samples from which 3 kg was pulverised to produce a 30 g charge for fire assay'). In other cases more explanation may be required, such as where there is coarse gold that has inherent sampling problems. Unusual commodities or mineralisation types (eg submarine nodules) may warrant disclosure of detailed information.</i></p>	<p>pressure minimise the number of drill samples.</p> <p>Geological logging of RC chips is completed at site with representative chips being stored in drill chip trays. Downhole surveys of dip and azimuth are conducted using a single shot camera every 30m to detect deviations of the hole from the planned dip and azimuth. The drill-hole collar locations were recorded using a hand held GPS, which has an accuracy of +/- 5m. At a later date the drill-hole collar will be surveyed to a greater degree of accuracy.</p> <p><i>MLEM Survey:</i> Field calibration of the survey instruments using standards is undertaken each day. A minimum of 3 consistent readings per station are taken to ensure accuracy of data collected.</p> <p><i>DHEM Survey:</i> For the DHEM survey, the polarity of each component is checked to ensure the system was set up using the correct component orientations. The hole position is corrected for trajectory using orientation survey data.</p> <p><i>Diamond Core Sampling:</i> Core is drilled with HQ and NQ2 size and sampled as half core to produce a bulk sample for analysis. Intervals vary from 0.3 – 1m maximum and are selected with an emphasis on geological control.</p> <p>Assays have been completed at either SGS Laboratories or Intertek Genalysis ("Lab") in Perth. Samples are sent to the Lab where they are crushed to 6 mm and then pulverised to 75 microns. A 30 g charge of the sample is fire assayed for gold, platinum and palladium. The detection range for gold is 1 – 2000 ppbAu, and 0.5 – 2000 ppb for platinum and palladium. This is believed to be an appropriate detection level for these elements within this specific mineral environment. However, should Au, Pt or Pd levels reported exceed these levels an additional assay method will be used to re-test samples.</p> <p>All other metals will be analysed using an acid digest and an ICP finish. The sample is digested with nitric, hydrochloric, hydrofluoric and perchloric acids to effect as near to total solubility of the sample as possible. The solution containing samples of interest, including those that need further review, will then be presented to an ICP-OES for the further quantification of the selected elements.</p> <p><i>RC Sampling:</i> A 1m composite sample is taken from the bulk sample of RC chips that may weigh in excess of 40 kg. Assay preparation is for the current drilling program will be completed by Intertek.</p> <p>Assays are undertaken at Intertek in Kalgoorlie and Perth. Samples are sent to Intertek where they are crushed to 6 mm and then pulverised to 75 microns. A 30 g charge of the sample is fire assayed for gold, platinum and palladium. The detection range for gold is 1 – 2000 ppbAu, and 0.5 – 2000 ppb for platinum and palladium. This is believed to be an appropriate detection level for these elements within this specific mineral environment. However, should Au, Pt or Pd levels reported exceed these levels an additional assay method will be used to re-test samples.</p> <p>All other metals will be analysed using an acid digest and an ICP finish. The sample is digested with nitric, hydrochloric, hydrofluoric and perchloric acids to effect as near to total solubility of the sample as possible. The solution containing samples of interest, including those that need further review, will then be presented to an ICP-OES for the further quantification of the selected elements.</p>
<p>Drilling techniques</p>	<p><i>Drill type (eg core, reverse circulation, open-hole hammer, rotary air blast, auger, Bangka, sonic, etc) and details (eg core diameter, triple or standard tube, depth of diamond tails, face-sampling bit or other type, whether core is</i></p>	<p><i>Diamond Core Sampling:</i> The collars of the diamond holes were drilled using RC drilling down through the regolith to the point of refusal or to a level considered geologically significant to change to core. The hole was then continued using HQ diamond core until the drillers determined that a change to NQ2 coring was required.</p>

Criteria	JORC Code explanation	Commentary
	<i>oriented and if so, by what method, etc).</i>	<p>The core is oriented and marked by the drillers. The core is oriented using ACT Mk II electric core orientation.</p> <p><i>RC Sampling:</i> The RC drilling uses a 140 mm diameter face hammer tool. High capacity air compressors on the drill rig are used to ensure a continuously sealed and high pressure system during drilling to maximise the recovery of the drill cuttings, and to ensure chips remain dry to the maximum extent possible.</p>
Drill sample recovery	<i>Method of recording and assessing core and chip sample recoveries and results assessed.</i>	<p><i>Diamond Core Sampling:</i> Diamond core recoveries/core loss are recorded during drilling and reconciled during the core processing and geological logging. No significant sample recovery problems are thought to have occurred in any holes drilled to date. There has been a notable and consistent competency encountered in the rocks during drilling.</p> <p><i>RC Sampling:</i> RC samples are visually checked for recovery, moisture and contamination. Geological logging is completed at site with representative RC chips stored in chip trays.</p>
	<i>Measures taken to maximise sample recovery and ensure representative nature of the samples.</i>	<p><i>Diamond Core Sampling:</i> Depths are checked against the depth on the core blocks and rod counts are routinely carried out by the drillers. Core loss was recorded by St George geologists and sampling intervals were not carried through core loss.</p> <p><i>RC Sampling:</i> Samples are collected using cone or riffle splitter. Geological logging of RC chips is completed at site with representative chips being stored in drill chip trays.</p>
	<i>Whether a relationship exists between sample recovery and grade and whether sample bias may have occurred due to preferential loss/gain of fine/coarse material.</i>	<p>To date, no detailed analysis to determine the relationship between sample recovery and grade has been undertaken for any drill program. This analysis will be conducted following any economic discovery.</p> <p>The nature of magmatic sulphide distribution hosted by the competent and consistent rocks hosting any mineralised intervals are considered to significantly reduce any possible issue of sample bias due to material loss or gain.</p>
Logging	<i>Whether core and chip samples have been geologically and geotechnically logged to a level of detail to support appropriate Mineral Resource estimation, mining studies and metallurgical studies.</i>	<p>Geological logging is carried out on all drill holes with lithology, alteration, mineralisation, structure and veining recorded.</p>
	<i>Whether logging is qualitative or quantitative in nature. Core (or costean, channel, etc) photography.</i>	<p>Logging of diamond core and RC samples records lithology, mineralogy, mineralisation, structures (core only), weathering, colour and other noticeable features. Core was photographed in both dry and wet form.</p>
	<i>The total length and percentage of the relevant intersections logged.</i>	<p>All drill holes are geologically logged in full and detailed litho-geochemical information is collected by the field XRF unit. The data relating to the elements analysed is used to determine further information regarding the detailed rock composition.</p>
Sub-sampling techniques and sample preparation	<i>If core, whether cut or sawn and whether quarter, half or all core taken.</i>	<p>The HQ and NQ2 core is cut in half length ways in Kalgoorlie using an automatic core saw. All samples are collected from the same side of the core. The half-core samples are submitted to the Lab for analysis.</p>
	<i>If non-core, whether riffled, tube sampled, rotary split, etc and whether sampled wet or dry.</i>	<p>RC samples are collected in dry form. Samples are collected using cone or riffle splitter when available. Geological logging of RC chips is completed at site with representative chips being stored in drill chip trays.</p>

Criteria	JORC Code explanation	Commentary
	<p><i>For all sample types, the nature, quality and appropriateness of the sample preparation technique.</i></p> <hr/> <p><i>Quality control procedures adopted for all sub-sampling stages to maximise representivity of samples.</i></p> <hr/> <p><i>Measures taken to ensure that the sampling is representative of the in situ material collected, including for instance results for field duplicate/second-half sampling.</i></p> <hr/> <p><i>Whether sample sizes are appropriate to the grain size of the material being sampled.</i></p>	<p><i>Diamond Core Sampling:</i> Diamond core was drilled with HQ and NQ2 size and sampled as complete half core to produce a bulk sample for analysis. Intervals selected varied from 0.3 – 1m (maximum) with a strong geological control (as is possible in diamond core) to ensure grades are representative, i.e. remove any bias through projecting assay grades beyond appropriate geological boundaries.</p> <p>Assay preparation procedures ensure the entire sample is pulverised to 75 microns before the sub-sample is taken. This removes the potential for the significant sub-sampling bias that can be introduced at this stage.</p> <p><i>RC Sampling:</i> Sample preparation for RC chips follows a standard protocol.</p> <p>Assay preparation procedures ensure the entire sample is pulverised to 75 microns before the sub-sample is taken. This removes the potential for the significant sub-sampling bias that can be introduced at this stage.</p> <hr/> <p><i>Diamond Core Sampling:</i> Drill core is cut in half lengthways and the total half-core submitted as the sample. This meets industry standards where 50% of the total sample taken from the diamond core is submitted.</p> <p><i>RC Sampling:</i> Field QC procedures maximise representivity of RC samples and involve the use of certified reference material as assay standards, along with blanks, duplicates and barren washes.</p> <hr/> <p><i>Diamond Core Sampling:</i> The retention of the remaining half-core is an important control as it allows assay values to be determined against the actual geology; and where required a quarter core sample may be submitted for assurance. No resampling of quarter core or duplicates has been done at this stage of the project.</p> <p><i>RC Sampling:</i> Field duplicates were taken on 1m composites for RC samples.</p> <hr/> <p>The sample sizes are considered to be appropriate to correctly represent the sulphide mineralisation at the East Laverton Property based on: the style of mineralisation (massive and disseminated sulphides), the thickness and consistency of the intersections and the sampling methodology.</p>
<p>Quality of assay data and laboratory tests</p>	<p><i>The nature, quality and appropriateness of the assaying and laboratory procedures used and whether the technique is considered partial or total.</i></p> <hr/> <p><i>For geophysical tools, spectrometers, handheld XRF instruments, etc, the parameters used in determining the analysis including instrument make and model, reading times, calibrations factors applied and their derivation, etc.</i></p>	<p>For diamond core and RC sampling, a 30 gram sample will be fire assayed for gold, platinum and palladium. The detection range for gold is 1 – 2000 ppbAu, and 0.5 – 2000 ppb for platinum and palladium. This is believed to be an appropriate detection level for the levels of these elements within this specific mineral environment. However, should Au, Pt or Pd levels reported exceed these levels; an alternative assay method will be selected.</p> <p>All other metals will be analysed using an acid digest and an ICP finish. The sample is digested with nitric, hydrochloric, hydrofluoric and perchloric acids to effect as near to total solubility of the sample as possible. The solution containing samples of interest, including those that need further review, will then be presented to an ICP-OES for the further quantification of the selected elements.</p> <hr/> <p>A handheld XRF instrument (Olympus Innov-X Spectrum Analyser) is used to systematically analyse the drill core and RC chips onsite. Reading time was 60 seconds. The instruments are serviced and calibrated at least once a year. Field calibration of the XRF instrument using standards is undertaken each day.</p> <p>For the EM surveys, specifications and quality control measures are noted above.</p>

Criteria	JORC Code explanation	Commentary
	<i>Nature of quality control procedures adopted (eg standards, blanks, duplicates, external laboratory checks) and whether acceptable levels of accuracy (ie lack of bias) and precision have been established.</i>	Laboratory QAQC involves the use of internal lab standards using certified reference material, blanks, splits and replicates as part of in house procedures. The Company will also submit an independent suite of CRMs, blanks and field duplicates (see above).
Verification of sampling and assaying	<i>The verification of significant intersections by either independent or alternative company personnel.</i>	Significant intersections are verified by the Company's Technical Director and Consulting Field Geologist.
	<i>The use of twinned holes.</i>	No twinned holes have been completed.
	<i>Documentation of primary data, data entry procedures, data verification, data storage (physical and electronic) protocols.</i>	Geological data was collected using handwritten log sheets and imported in the field onto a laptop detailing geology (weathering, structure, alteration, mineralisation), sampling quality and intervals, sample numbers, QA/QC and survey data. This data, together with the assay data received from the laboratory and subsequent survey data was entered into the Company's database.
	<i>Discuss any adjustment to assay data.</i>	No adjustments or calibrations will be made to any primary assay data collected for the purpose of reporting assay grades and mineralised intervals. For the geological analysis, standards and recognised factors may be used to calculate the oxide form assayed elements, or to calculate volatile free mineral levels in rocks.
Location of data points	<i>Accuracy and quality of surveys used to locate drill holes (collar and down-hole surveys), trenches, mine workings and other locations used in Mineral Resource estimation.</i>	Drill hole collar locations are determined using a handheld GPS with an accuracy of +/- 5m. Down hole surveys of dip and azimuth were conducted using a single shot camera every 30m to detect deviations of the hole from the planned dip and azimuths.
	<i>Specification of the grid system used.</i>	The grid system used is GDA94, MGA Zone 51.
	<i>Quality and adequacy of topographic control.</i>	Best estimated RLs were assigned during drilling and are to be corrected at a later stage.
Data spacing and distribution	<i>Data spacing for reporting of Exploration Results.</i>	The drill programs target EM conductors and other high quality targets for massive nickel sulphide mineralisation. The spacing and distribution of holes is not relevant to these programs.
	<i>Whether the data spacing and distribution is sufficient to establish the degree of geological and grade continuity appropriate for the Mineral Resource and Ore Reserve estimation procedure(s) and classifications applied.</i>	Drilling is at the exploration stage. Mineralisation at the East Laverton Property has not yet demonstrated to be sufficient in both geological and grade continuity appropriate for the Mineral Resource and Ore Reserve estimation procedure(s) and classifications to be applied.
	<i>Whether sample compositing has been applied.</i>	Samples are taken at one metre lengths and adjusted where necessary to reflect local variations in geology or where visible mineralised zones are encountered, in order to preserve the samples as representative.
Orientation of data in relation to geological structure	<i>Whether the orientation of sampling achieves unbiased sampling of possible structures and the extent to which this is known, considering the deposit type.</i>	The drill holes are drilled towards 060 at an angle of -60 degrees (unless otherwise stated) to intersect the modelled mineralised zones at a near perpendicular orientation. However, the orientation of key structures may be locally variable and any relationship to mineralisation has yet to be identified.
	<i>If the relationship between the drilling orientation and the orientation of key mineralised structures is considered to have introduced a sampling bias, this should be assessed and reported if material.</i>	No orientation based sampling bias has been identified in the data to date.
Sample security	<i>The measures taken to ensure sample security.</i>	Chain of Custody is managed by the Company until samples pass to a duly certified assay laboratory for subsampling and assaying. The cut-core trays and RC sample bags are stored on secure sites and delivered to the assay laboratory by the Company or a competent

Criteria	JORC Code explanation	Commentary
		agent. When in transit, they are kept in locked premises. Transport logs have been set up to track the progress of samples. The chain of custody passes upon delivery of the samples to the assay laboratory.
Audits or reviews	<i>The results of any audits or reviews of sampling techniques and data.</i>	Sampling techniques and procedures are regularly reviewed internally, as is data. To date, no external audits have been completed on the drilling programme.

Section 2 Reporting of Exploration Results (Criteria listed in section 1 will also apply to this section where relevant)

Criteria	JORC Code explanation	Commentary
Mineral Tenement and Land Status	<i>Type, name/reference number, location and ownership including agreements or material issues with third parties including joint ventures, partnerships, overriding royalties, native title interests, historical sites, wilderness or national park and environmental settings.</i> <i>The security of the tenure held at the time of reporting along with any known impediments to obtaining a licence to operate in the area.</i>	The East Laverton Property comprises 27 exploration licences, and details are available in the Company's Quarterly Activities Report which can be found on our website at www.stgm.com.au . Each tenement is 100% owned by Desert Fox Resources Pty Ltd, a wholly owned subsidiary of St George Mining. Certain tenements are subject to a 2% Net Smelter Royalty in favour of a third party. None of the tenements are the subject of a native title claim. No environmentally sensitive sites have been identified at any of the tenements. The tenements are in good standing; no known impediments exist.
Exploration Done by Other Parties	<i>Acknowledgment and appraisal of exploration by other parties.</i>	In 2012, BHP Billiton Nickel West Pty Ltd (Nickel West) completed a reconnaissance RC (reverse circulation) drilling programme at the East Laverton Property as part of the Project Dragon farm-in arrangement between Nickel West and the Company. That farm-in arrangement has been terminated. The drilling programme comprised 35 RC holes for 8,560m drilled. The results from the Nickel West drilling programme were reported by the Company in its ASX Release dated 25 October 2012 "Drill Results at Project Dragon". Drilling intersected primary nickel sulphide mineralisation and established the presence of fertile, high MgO ultramafic sequences at the East Laverton Property. Prior to the Project Dragon drilling programme, there was no systematic exploration for nickel sulphides at the East Laverton Property. Historical exploration in the region was dominated by shallow RAB and aircore drilling, much of which had been incompletely sampled, assayed, and logged. This early work was focused on gold rather than nickel sulphide exploration.
Geology	<i>Deposit type, geological setting and style of mineralisation</i>	The Company's East Laverton Property located in the NE corner of the Eastern Goldfields Province of the Archean Yilgarn Craton. The project area is proximally located to the Burtville-Yarmana terrane boundary and the paleo-cratonic marginal setting is consistent with the extensive komatiites found on the property. The drilling at the East Laverton Property has confirmed extensive strike lengths of high-MgO olivine-rich rocks across three major ultramafic belts. Ultramafic rocks of this composition are known to host high grade nickel sulphides.
Drill hole information	<i>A summary of all information material to the understanding of the exploration results including tabulation of the following information for all Material drill holes:</i> <ul style="list-style-type: none"> • Easting and northing of the drill hole collar • Elevation or RL (Reduced Level – elevation above sea level in meters) of the drill hole collar • Dip and azimuth of the hole 	Refer to information in the body of this announcement. Information regarding exploration results from Project Dragon can be found in the Company's ASX Release dated 25 October 2012 "Drill Results at Project Dragon" which is available to view on www.stgm.com.au . Table 1 to this 2012 JORC Section contains drill hole information on

Criteria	JORC Code explanation	Commentary
	<ul style="list-style-type: none"> • Down hole length and interception depth • Hole length 	DRAC35, DRAC38 and DDNRC002 which were the first drill holes at the East Laverton Property to identify nickel sulphides.
Data aggregation methods	<i>In reporting Exploration Results, weighting averaging techniques, maximum and/or minimum grade truncations (e.g. cutting of high grades) and cut-off grades are usually Material and should be stated.</i>	No top-cuts have been applied. A nominal 0.15% Ni lower cut-off is applied unless otherwise indicated.
	<i>Where aggregated intercepts incorporate short lengths of high grade results and longer lengths of low grade results, the procedure used for such aggregation should be stated and some typical examples of such aggregations should be shown in detail.</i>	High grade massive sulphide intervals internal to broader zones of sulphide mineralisation are reported as included intervals.
	<i>The assumptions used for any reporting of metal equivalent values should be clearly stated.</i>	No metal equivalent values are used for reporting exploration results.
Relationship between mineralisation widths and intercept lengths	<i>These relationships are particularly important in the reporting of exploration results. If the geometry of the mineralisation with respect to the drill hole angle is known, its nature should be reported. If it is not known and only the down hole lengths are reported, there should be a clear statement to this effect.</i>	The geometry of the mineralisation is not yet known due to insufficient deep drilling in the targeted area.
Diagrams	<i>Appropriate maps and sections (with scales) and tabulations of intercepts should be included for any significant discovery being reported. These should include, but not be limited to a plane view of drill hole collar locations and appropriate sectional views.</i>	Maps will be included with any announcement of any significant discovery, following review of assay results from the drilling programme.
Balanced Reporting	<i>Where comprehensive reporting of all Exploration Results is not practical, representative reporting of both low and high grades and/or widths should be practiced to avoid misleading reporting of Exploration Results.</i>	A comprehensive report on recent drilling at the East Laverton Property can be found in the following ASX Releases that are available on our website at www.stgm.com.au : 3 September 2014 'Nickel Sulphide Drilling – Update on Phase 1' 11 February 2015 'St George Extends Nickel Sulphide Zone'. 17 August 2015 'Assays Confirm Nickel Sulphide Zone at Desert Dragon Central'
Other substantive exploration data	<i>Other exploration data, if meaningful and material, should be reported including (but not limited to): geological observation; geophysical survey results; geochemical survey results; bulk samples – size and method of treatment; metallurgical test results; bulk density, groundwater, geotechnical and rock characteristics; potential deleterious or contaminating substances.</i>	All meaningful and material information has been included in the body of the text. No metallurgical or mineralogical assessments have been completed.
Further Work	<i>The nature and scale of planned further work (e.g. tests for lateral extensions or depth extensions or large – scale step – out drilling). Diagrams clearly highlighting the areas of possible extensions, including the main geological interpretations and future drilling areas, provided this information is not commercially sensitive.</i>	A discussion of further exploration work is contained in the body of the ASX Release.

HOLE ID	NORTHIN G (m)	EASTIN G (m)	DIP (deg)	AZM (deg)	DEPT H (m)	FROM (m)	TO (m)	WIDTH (m)	Ni (%)	Cu (ppm)	Pt+Pd (ppb)
DRAC35	6739401	527150	-60	250	244	100	118	18	0.40	342	197
						100	104	4	0.57	366	294
						112	114	2	0.51	584	281
DRAC38	6733696	530786	-60	250	298	108	138	30	0.31	10	31
						132	138	6	0.48	40	48
						132	134	2	0.62	92	53
DDNRC002	6742718	523717	-60	59	246	53	60	7	0.54		
						53	55	2	1.08		

Table 1 to 2012 JORC Section – Significant intersections in DRAC35, DRAC38 and DDNRC002.

These historical holes are the first identification of nickel sulphides at the East Laverton Property. For further details on DRAC35 and DRAC38, see the ASX Release dated 25 October 2012 “Drill Results at Project Dragon”. For further details on DDNRC002, see the ASX Release dated 11 April 2013 “St George Provides Exploration Update”. These ASX Releases are available to view on the Company’s website at www.stgm.om.au