

13 November 2014

FURTHER HIGH IMPACT DRILLING PLANNED AT VMS PROSPECT

HIGHLIGHTS:

- **Continuing positive results from VMS exploration**
- **Downhole EM surveys identify additional conductors for testing**
- **Drilling and geophysics identify significant trend of VMS mineralisation**
- **Dragon 3 conductor is centrally located within this trend**
- **Drilling of Dragon 3 conductor commences next week**

HIGH IMPACT DRILLING AT THE VMS PROSPECT

St George Mining Limited (ASX: **SGQ**) ('St George Mining' or 'the Company') is pleased to report continuing positive results from its ongoing exploration of the VMS (volcanogenic massive sulphide) prospect, at the Company's 100% owned East Laverton Property in Western Australia.

The VMS prospectivity at East Laverton was confirmed by a significant intersection of VMS-style base-metal mineralisation in drill hole DDD011 - 16m @ 0.45% Zn from 72m. This hole tested the Dragon 2 EM conductor.

Dragon 3 is another EM conductor that lies on-strike and to the north-west of Dragon 2 and DDD011. St George believes this conductor may represent a more central part of the VMS system with higher grade mineralisation.

Drilling of this highly prospective EM target is scheduled for next week.

MORE EM CONDUCTORS

Four cased drill holes were successfully completed last month around DDD011. The objective was to determine the general trend of the VMS mineralisation encountered in this hole.

DHEM surveys were conducted in all four holes. Modelling and interpretation of the DHEM data was completed by Newexco, the Company's geophysical advisers.

The interim XRF results from the drilling showed that of the four completed holes, DDRC027 encountered the comparatively thickest and highest grade zones of base metal mineralisation. This confirmed a north westerly trend of the mineralisation encountered in DDD011.

The DHEM survey at drill hole DDRC027 recorded a strong off-hole EM anomaly. Modelling suggested some evidence of the conductor may be present in this hole around a depth of 140m, although DDRC027 did not intersect the main source of the EM anomaly.

DDRC027 intersected an interval of 10m @ 0.37% Zn from 144m, which is consistent with the DHEM model. As the sulphide interval in DDRC027 is not representative of the main EM anomaly, this mineralised interval is likely to be part of a larger mineralised body detected by the DHEM survey.

This is positive support for the potential for larger scale VMS-style mineralisation to be present in a lateral position to DDRC027.

Drill holes DDRC026, 028 and 029 also recorded off-hole EM anomalies that were not intersected by these holes. These will continue to be reviewed in light of ongoing exploration results at the VMS prospect.

EXPLORATION UPSIDE IS INCREASED

A ground gravity survey was recently completed to assist in the interpretation of the geology and structures on the Stella Range belt. Gravity measurements detect denser (iron-rich) rocks, which may not have a magnetic response. The gravity survey defined two discrete bodies in the area of the VMS prospect.

Previous drilling within the VMS prospect area noted an anomalous zone of iron-rich sediments, spatially associated with the mineralised horizon. This feature was detected by the gravity survey as a zone with a narrow width and north westerly trend, which is sub-parallel with the greenstone strike (see Figure 1).

The southern gravity anomaly has a strike of 1,500m, and this is where the current VMS exploration is being carried out.

The northern anomaly has a greater width and strike length of 1,400m. A moving loop electromagnetic (MLEM) survey recently completed over this area has identified two new EM conductors within this gravity anomaly. These strong EM conductors are currently being reviewed and are likely to generate additional drill targets for future testing.

St George Mining Executive Chairman, John Prineas, said:

“It’s very pleasing to see each work program advancing the VMS exploration project, and delivering new exploration upside that justifies further work.

“We are keenly anticipating the results of next week’s test drilling of the Dragon 3 conductor, which could provide a major exploration breakthrough.”

XRF ANALYSIS

References to XRF results relate to analysis using a hand-held Olympus Innov-X Spectrum Analyser. This portable device provides immediate analysis of modal mineralogy of drill samples.

The XRF data is useful in assisting in the interpretation of the geological character of the rocks being encountered during drilling, and is used to assist in the ongoing management of the drilling programme. The data may not be representative of the actual metal content in that sample.

The device is unable to reliably detect precious metals in samples but is considered to be more reliable for base metal assessment; however the results are always less representative and less accurate than those of the laboratory assay results.

RC drilling collects a large volume of drill cuttings per metre interval which is captured in individual plastic bags. A sample of the fine fraction of the drill cuttings is selected every metre for XRF analysis.

Results from XRF analysis of the fine fraction of the drill returns as stated are indicative only, and as preliminary results are subject to subsequent confirmation by geochemical analysis at Intertek Laboratories.

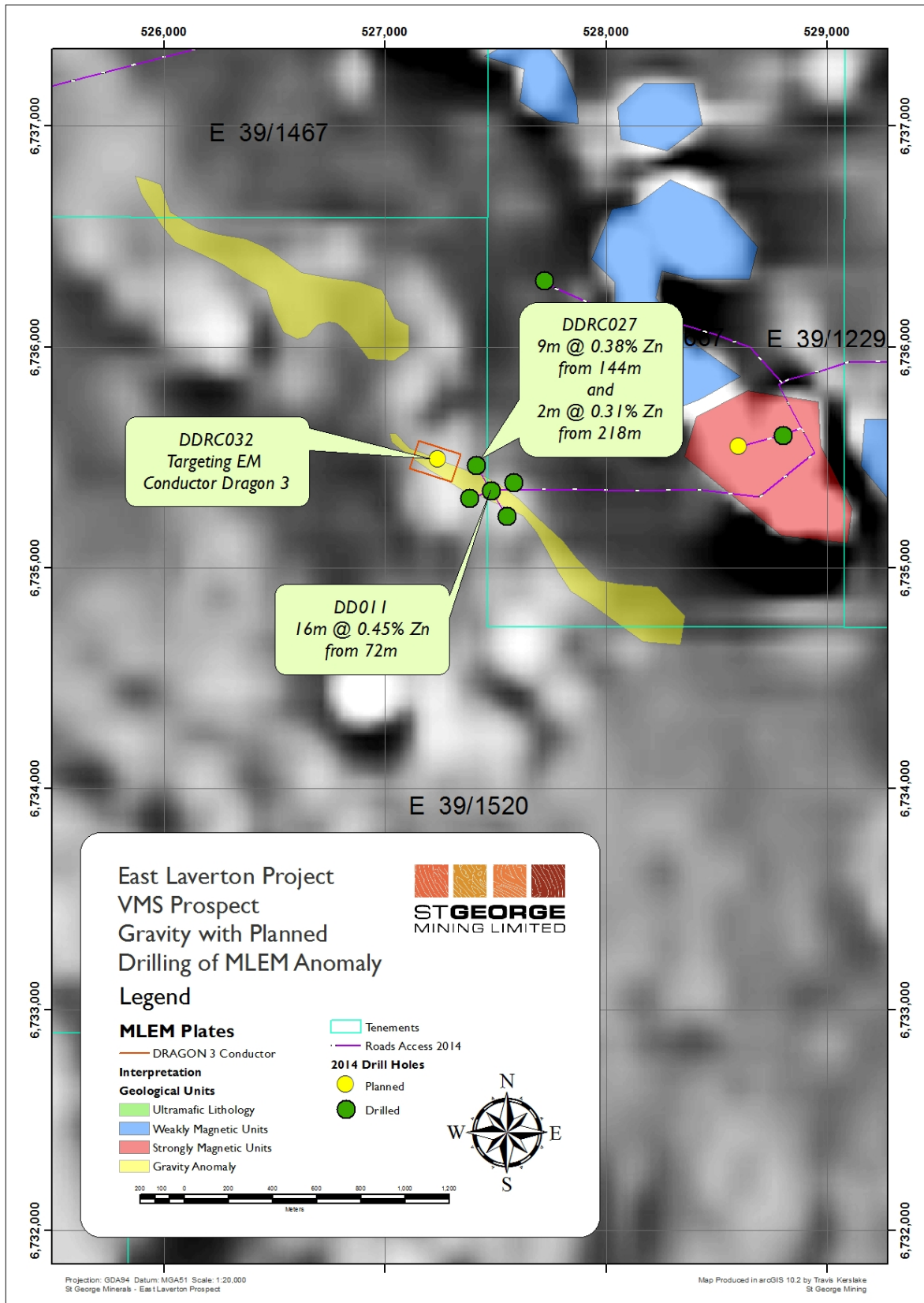


Figure 1 – Planned hole DDRC032 will test the Dragon 3 conductor, within the southern gravity anomaly. The gravity anomaly to the north-west hosts two further EM conductors that remain to be tested.

For further information, please contact:

John Prineas

Executive Chairman

St George Mining Limited

(+61) 411 421 253

John.prineas@stgm.com.au

Colin Hay

Professional Public Relations

(+61) 08 9388 0944 mob 0404 683 355

colin.hay@ppr.com.au

Competent Person Statement:

The information in this report that relates to Exploration Targets, Exploration Results, Mineral Resources or Ore Reserves is based on information compiled by Mr Timothy Hronsky, a Competent Person who is a Member of The Australasian Institute of Mining and Metallurgy. Mr Hronsky is employed by Essential Risk Solutions Ltd which has been retained by St George Mining Limited to provide technical advice on mineral projects.

Mr Hronsky has sufficient experience that is relevant to the style of mineralisation and type of deposit under consideration and to the activity being undertaken to qualify as a Competent Person as defined in the 2012 Edition of the 'Australasian Code for Reporting of Exploration Results, Mineral Resources and Ore Reserves'. Mr Hronsky consents to the inclusion in the report of the matters based on his information in the form and context in which it appears.

The information in this announcement that relates to Exploration Results and Mineral Resources as defined in the 2004 edition of the 'Australasian Code for Reporting of Exploration Results, Mineral Resources and Ore Reserves' is based on information compiled by Mr Hronsky. Mr Hronsky is a member of the Australasian Institute of Mining and Metallurgy has sufficient experience, which is relevant to the style of mineralisation and type of deposit under consideration and to the activity, which he is undertaking. This qualifies Mr Hronsky as a "Competent Person" as defined in the 2004 edition of the 'Australasian Code for Reporting of Exploration Results, Mineral Resources and Ore Reserves'. Mr Hronsky consents to the inclusion of information in this announcement in the form and context in which it appears.

The following section is provided for compliance with requirements for the reporting of exploration results under the JORC Code, 2012 Edition.

Section 1 Sampling Techniques and Data

(Criteria in this section apply to all succeeding sections)

Criteria	JORC Code explanation	Commentary
Sampling techniques	<i>Nature and quality of sampling (eg cut channels, random chips, or specific specialised industry standard measurement tools appropriate to the minerals under investigation, such as down hole gamma sondes, or handheld XRF instruments, etc). These examples should not be taken as limiting the broad meaning of sampling.</i>	<p>This ASX Release dated 13 November 2014 reports on interim exploration results from Phase 2 of the Company’s 2014 drilling campaign, a highly targeted drilling programme to test high quality targets for massive nickel sulphide mineralisation and VMS-style mineralisation.</p> <p>Drilling in Phase 2 is being undertaken by VM Drilling Pty Ltd using a Schramm 685 truck mounted drill rig. This rig has capability for deep reverse circulation (RC) drilling.</p> <p><i>RC Sampling:</i> All samples from the RC drilling are taken as 1m samples. Samples are sent to Intertek Laboratories for assaying.</p> <p>Appropriate QAQC samples (standards, blanks and duplicates) are inserted into the sequences as per industry best practice.</p> <p>Samples are collected using cone or riffle splitter. Geological logging of RC chips is completed at site with representative chips being stored in drill chip trays.</p> <p>Onsite XRF analysis is conducted on the fines from RC chips using a hand-held Olympus Innov-X Spectrum Analyser. These results are only used for onsite interpretation and preliminary base metal assessment subject to final geochemical analysis by laboratory assays.</p> <p><i>Down-hole electromagnetic (DHEM) survey:</i> A DHEM survey will be completed for certain drill holes. The DHEM survey is designed and managed by Newexco Services Pty Ltd, with field work contracted to Bushgum Holdings Pty Ltd.</p> <p>Key specifications of the DHEM survey are:</p> <p><i>System:</i> Atlantis (analogue)</p> <p><i>Components:</i> A, U, V</p> <p><i>Component direction:</i></p> <ul style="list-style-type: none"> • Ba – Parallel to hole axis, positive up hole. • Bu – Perpendicular to hole axis: toward 12 o’ clock when looking down hole. • Bv – Perpendicular to hole axis: toward 9 o’ clock when looking down hole.
	<i>Include reference to measures taken to ensure sample representivity and the appropriate calibration of any measurement tools or systems used.</i>	<p><i>RC Sampling:</i> The RC drilling rig has a cone splitter built into the cyclone on the rig. Samples are taken on a one meter basis and collected directly from the splitter into uniquely numbered calico bags. The calico bag contains a representative sample from the drill return for that metre. This results in a representative sample being taken from drill return, for that metre of drilling. The remaining majority of the sample return for that metre is collected and stored in a green plastic bag marked with that specific metre interval. The cyclone is blown through with compressed air after each plastic and calico sample bag is removed. If wet sample or clays are encountered then the cyclone is opened and cleaned manually and with the aid of a compressed air gun.</p> <p>A large auxiliary compressor (“air-pack”) is mounted on a separate truck and the airstream is connected to the rig. This provides a significant addition to the compressed air supplied by the in-built compressors mounted on the drill rig itself. This auxiliary</p>

Criteria	JORC Code explanation	Commentary
	<p><i>Aspects of the determination of mineralisation that are Material to the Public Report.</i></p> <p><i>In cases where 'industry standard' work has been done this would be relatively simple (eg 'reverse circulation drilling was used to obtain 1 m samples from which 3 kg was pulverised to produce a 30 g charge for fire assay'). In other cases more explanation may be required, such as where there is coarse gold that has inherent sampling problems. Unusual commodities or mineralisation types (eg submarine nodules) may warrant disclosure of detailed information.</i></p>	<p>compressor maximises the sample return through restricting air pressure loss, especially in deeper holes. In addition, the high and consistent levels of air pressure minimise the number of drill samples.</p> <p>Geological logging of RC chips is completed at site with representative chips being stored in drill chip trays. Downhole surveys of dip and azimuth are conducted using a single shot camera every 30m to detect deviations of the hole from the planned dip and azimuth. The drill-hole collar locations were recorded using a hand held GPS, which has an accuracy of +/- 5m. At a later date the drill-hole collar will be surveyed to a greater degree of accuracy..</p> <p><i>DHEM Survey:</i> For the DHEM survey, the polarity of each component is checked to ensure the system was set up using the correct component orientations. The hole position is corrected for trajectory using orientation survey data.</p> <p><i>RC Sampling:</i> A 1m composite sample is taken from the bulk sample of RC chips that may weigh in excess of 40 kg. Assay preparation is completed by Intertek.</p> <p>Assays are undertaken at Intertek in Kalgoorlie and Perth. Samples are sent to Intertek where they are crushed to 6 mm and then pulverised to 75 microns. A 30 g charge of the sample is fire assayed for gold, platinum and palladium. The detection range for gold is 1 – 2000 ppbAu, and 0.5 – 2000 ppb for platinum and palladium. This is believed to be an appropriate detection level for these elements within this specific mineral environment. However, should Au, Pt or Pd levels reported exceed these levels an additional assay method will be used to re-test samples.</p> <p>All other metals will be analysed using an acid digest and an ICP finish. The sample is digested with nitric, hydrochloric, hydrofluoric and perchloric acids to effect as near to total solubility of the sample as possible. The solution containing samples of interest, including those that need further review, will then be presented to an ICP-OES for the further quantification of the selected elements.</p>
Drilling techniques	<p><i>Drill type (eg core, reverse circulation, open-hole hammer, rotary air blast, auger, Bangka, sonic, etc) and details (eg core diameter, triple or standard tube, depth of diamond tails, face-sampling bit or other type, whether core is oriented and if so, by what method, etc).</i></p>	<p><i>RC Sampling:</i> The RC drilling uses a 140 mm diameter face hammer tool. High capacity air compressors on the drill rig are used to ensure a continuously sealed and high pressure system during drilling to maximise the recovery of the drill cuttings, and to ensure chips remain dry to the maximum extent possible.</p>
Drill sample recovery	<p><i>Method of recording and assessing core and chip sample recoveries and results assessed.</i></p>	<p><i>RC Sampling:</i> RC samples are visually checked for recovery, moisture and contamination. Geological logging is completed at site with representative RC chips stored in chip trays.</p>
	<p><i>Measures taken to maximise sample recovery and ensure representative nature of the samples.</i></p>	<p><i>RC Sampling:</i> Samples are collected using cone or riffle splitter. Geological logging of RC chips is completed at site with representative chips being stored in drill chip trays.</p>
	<p><i>Whether a relationship exists between sample recovery and grade and whether sample bias may have occurred due to preferential loss/gain of fine/coarse material.</i></p>	<p>To date, no detailed analysis to determine the relationship between sample recovery and grade has been undertaken for this drill programme. This analysis will be conducted following any economic discovery.</p> <p>The nature of magmatic sulphide distribution hosted by the competent and consistent rocks hosting any mineralised intervals are considered to significantly reduce any possible issue of sample bias due to material loss or gain.</p>

Criteria	JORC Code explanation	Commentary
Logging	<i>Whether core and chip samples have been geologically and geotechnically logged to a level of detail to support appropriate Mineral Resource estimation, mining studies and metallurgical studies.</i>	Geological logging is carried out on all drill holes with lithology, alteration, mineralisation, structure and veining recorded.
	<i>Whether logging is qualitative or quantitative in nature. Core (or costean, channel, etc) photography.</i>	Logging of RC samples records lithology, mineralogy, mineralisation, structures (core only), weathering, colour and other noticeable features.
	<i>The total length and percentage of the relevant intersections logged.</i>	All drill holes are geologically logged in full and detailed litho-geochemical information is collected by the field XRF unit. The data relating to the elements analysed is used to determine further information regarding the detailed rock composition.
Sub-sampling techniques and sample preparation	<i>If core, whether cut or sawn and whether quarter, half or all core taken.</i>	Drill holes are RC in this programme.
	<i>If non-core, whether riffled, tube sampled, rotary split, etc and whether sampled wet or dry.</i>	RC samples are collected in dry form. Samples are collected using cone or riffle splitter. Geological logging of RC chips is completed at site with representative chips being stored in drill chip trays.
	<i>For all sample types, the nature, quality and appropriateness of the sample preparation technique.</i>	RC Sampling: Sample preparation for RC chips follows a standard protocol. Assay preparation procedures ensure the entire sample is pulverised to 75 microns before the sub-sample is taken. This removes the potential for the significant sub-sampling bias that can be introduced at this stage.
	<i>Quality control procedures adopted for all sub-sampling stages to maximise representivity of samples.</i>	RC Sampling: Field QC procedures maximise representivity of RC samples and involve the use of certified reference material as assay standards, along with blanks, duplicates and barren washes.
	<i>Measures taken to ensure that the sampling is representative of the in situ material collected, including for instance results for field duplicate/second-half sampling.</i>	RC Sampling: Field duplicates were taken on 1m composites for RC samples.
	<i>Whether sample sizes are appropriate to the grain size of the material being sampled.</i>	The sample sizes are considered to be appropriate to correctly represent the sulphide mineralisation at the East Laverton Property based on: the style of mineralisation (massive and disseminated sulphides), the thickness and consistency of the intersections and the sampling methodology.
Quality of assay data and laboratory tests	<i>The nature, quality and appropriateness of the assaying and laboratory procedures used and whether the technique is considered partial or total.</i>	For RC sampling, a 30 gram sample will be fire assayed for gold, platinum and palladium. The detection range for gold is 1 – 2000 ppbAu, and 0.5 – 2000 ppb for platinum and palladium. This is believed to be an appropriate detection level for the levels of these elements within this specific mineral environment. However, should Au, Pt or Pd levels reported exceed these levels; an alternative assay method will be selected. All other metals will be analysed using an acid digest and an ICP finish. The sample is digested with nitric, hydrochloric, hydrofluoric and perchloric acids to effect as near to total solubility of the sample as possible. The solution containing samples of interest, including those that need further review, will then be presented to an ICP-OES for the further quantification of the selected elements.

Criteria	JORC Code explanation	Commentary
	<p><i>For geophysical tools, spectrometers, handheld XRF instruments, etc, the parameters used in determining the analysis including instrument make and model, reading times, calibrations factors applied and their derivation, etc.</i></p>	<p>A handheld XRF instrument (Olympus Innov-X Spectrum Analyser) is used to systematically analyse the drill core and RC chips onsite. Reading time was 60 seconds. The instruments are serviced and calibrated at least once a year. Field calibration of the XRF instrument using standards is undertaken each day.</p> <p>For the DHEM survey, specifications and quality control measures are noted above.</p>
	<p><i>Nature of quality control procedures adopted (eg standards, blanks, duplicates, external laboratory checks) and whether acceptable levels of accuracy (ie lack of bias) and precision have been established.</i></p>	<p>Laboratory QAQC involves the use of internal lab standards using certified reference material, blanks, splits and replicates as part of in house procedures. The Company will also submit an independent suite of CRMs, blanks and field duplicates (see above).</p>
Verification of sampling and assaying	<p><i>The verification of significant intersections by either independent or alternative company personnel.</i></p>	<p>Significant intersections are verified by the Company's Technical Director and Consulting Field Geologist.</p>
	<p><i>The use of twinned holes.</i></p>	<p>No twinned holes have been completed in this drilling programme.</p>
	<p><i>Documentation of primary data, data entry procedures, data verification, data storage (physical and electronic) protocols.</i></p>	<p>Geological data was collected using handwritten log sheets and imported in the field onto a laptop detailing geology (weathering, structure, alteration, mineralisation), sampling quality and intervals, sample numbers, QA/QC and survey data. This data, together with the assay data received from the laboratory and subsequent survey data was entered into the Company's database.</p>
	<p><i>Discuss any adjustment to assay data.</i></p>	<p>No adjustments or calibrations will be made to any primary assay data collected for the purpose of reporting assay grades and mineralised intervals. For the geological analysis, standards and recognised factors may be used to calculate the oxide form assayed elements, or to calculate volatile free mineral levels in rocks.</p>
Location of data points	<p><i>Accuracy and quality of surveys used to locate drill holes (collar and down-hole surveys), trenches, mine workings and other locations used in Mineral Resource estimation.</i></p>	<p>Drill hole collar locations are determined using a handheld GPS with an accuracy of +/- 5m. Drill hole collars will be preserved and surveyed to a greater of accuracy after the drilling programme.</p> <p>Down hole surveys of dip and azimuth were conducted using a single shot camera every 30m to detect deviations of the hole from the planned dip and azimuths.</p>
	<p><i>Specification of the grid system used.</i></p>	<p>The grid system used is GDA94, MGA Zone 51.</p>
	<p><i>Quality and adequacy of topographic control.</i></p>	<p>Best estimated RLs were assigned during drilling and are to be corrected at a later stage.</p>
Data spacing and distribution	<p><i>Data spacing for reporting of Exploration Results.</i></p>	<p>The drill programme is targeting EM conductors and other high quality targets for massive nickel sulphide mineralisation. The spacing and distribution of holes is not relevant to this programme.</p>
	<p><i>Whether the data spacing and distribution is sufficient to establish the degree of geological and grade continuity appropriate for the Mineral Resource and Ore Reserve estimation procedure(s) and classifications applied.</i></p>	<p>Drilling is at the exploration stage. Mineralisation at the East Laverton Property has not yet demonstrated to be sufficient in both geological and grade continuity appropriate for the Mineral Resource and Ore Reserve estimation procedure(s) and classifications to be applied.</p>
	<p><i>Whether sample compositing has been applied.</i></p>	<p>Samples are taken at one metre lengths and adjusted where necessary to reflect local variations in geology or where visible mineralised zones are encountered, in order to preserve the samples as representative.</p>
Orientation of data in relation to geological structure	<p><i>Whether the orientation of sampling achieves unbiased sampling of possible structures and the extent to which this is known, considering the deposit type.</i></p>	<p>The drill holes are drilled towards 060 at an angle of -60 degrees (unless otherwise stated) to intersect the modelled mineralised zones at a near perpendicular orientation. However, the orientation of key structures may be locally variable and any relationship to mineralisation at has yet to be identified.</p>

Criteria	JORC Code explanation	Commentary
	<i>If the relationship between the drilling orientation and the orientation of key mineralised structures is considered to have introduced a sampling bias, this should be assessed and reported if material.</i>	No orientation based sampling bias has been identified in the data to date.
Sample security	<i>The measures taken to ensure sample security.</i>	Chain of Custody is managed by the Company until samples pass to a duly certified assay laboratory for subsampling and assaying. The RC sample bags are stored on secure sites and delivered to the assay laboratory by the Company or a competent agent. When in transit, they are kept in locked premises. Transport logs have been set up to track the progress of samples. The chain of custody passes upon delivery of the samples to the assay laboratory.
Audits or reviews	<i>The results of any audits or reviews of sampling techniques and data.</i>	Sampling techniques and procedures are regularly reviewed internally, as is data. To date, no external audits have been completed on the drilling programme.

Section 2 Reporting of Exploration Results (Criteria listed in section 1 will also apply to this section where relevant)

Criteria	JORC Code explanation	Commentary
Mineral Tenement and Land Status	<i>Type, name/reference number, location and ownership including agreements or material issues with third parties including joint ventures, partnerships, overriding royalties, native title interests, historical sites, wilderness or national park and environmental settings.</i> <i>The security of the tenure held at the time of reporting along with any known impediments to obtaining a licence to operate in the area.</i>	Phase 2 of the 2014 drilling programme includes prospects located within Exploration Licences E39/1467, E39/1229, E39/1667, E39/1520, E39/985, E39/981, E39/982 and E39/1064. Each tenement is 100% owned by Desert Fox Resources Pty Ltd, a wholly owned subsidiary of St George Mining. Certain tenements are subject to a 2% Net Smelter Royalty in favour of a third party. None of the tenements are the subject of a native title claim. No environmentally sensitive sites have been identified at any of the tenements. The tenements are in good standing and no known impediments exist.
Exploration Done by Other Parties	<i>Acknowledgment and appraisal of exploration by other parties.</i>	In 2012, BHP Billiton Nickel West Pty Ltd (Nickel West) completed a reconnaissance RC (reverse circulation) drilling programme at the East Laverton Property as part of the Project Dragon farm-in arrangement between Nickel West and the Company. That farm-in arrangement has been terminated. The drilling programme comprised 35 RC holes for 8,560m drilled. The results from the Nickel West drilling programme were reported by the Company in its ASX Release dated 25 October 2012 "Drill Results at Project Dragon". Drilling intersected primary nickel sulphide mineralisation and established the presence of fertile, high MgO ultramafic sequences at the East Laverton Property. Prior to the Project Dragon drilling programme, there was no systematic exploration for nickel sulphides at the East Laverton Property. Historical exploration in the region was dominated by shallow RAB and aircore drilling, much of which had been incompletely sampled, assayed, and logged. This early work was focused on gold rather than nickel sulphide exploration.
Geology	<i>Deposit type, geological setting and style of mineralisation</i>	The Company's East Laverton Property located in the NE corner of the Eastern Goldfields Province of the Archean Yilgarn Craton. The project area is proximally located to the Burtville-Yarmana terrane boundary and the paleo-cratonic marginal setting is consistent with the extensive komatiites and carbonatite magmatism found on the property. The area is largely covered by Permian glaciogene sediments

Criteria	JORC Code explanation	Commentary
		<p>(Patterson Formation), which area is subsequently overlain by a thinner veneer of more recent sediments and aeolian sands. As a result the geological knowledge of the belt has previously been largely inferred from gravity and magnetic data and locally verified by drill-hole information and multi-element soil geochemical surveys.</p> <p>The drilling at the East Laverton Property has confirmed extensive strike lengths of high-MgO olivine-rich rocks across three major ultramafic belts. Ultramafic rocks of this composition are known to host high grade nickel sulphides.</p>
Drill hole information	<p>A summary of all information material to the understanding of the exploration results including tabulation of the following information for all Material drill holes:</p> <ul style="list-style-type: none"> • Easting and northing of the drill hole collar • Elevation or RL (Reduced Level – elevation above sea level in meters) of the drill hole collar • Dip and azimuth of the hole • Down hole length and interception depth • Hole length 	<p>Refer to information in the body of this announcement.</p> <p>Information regarding exploration results from Project Dragon can be found in the Company's ASX Release dated 25 October 2012 "Drill Results at Project Dragon" which is available to view on www.stgm.com.au.</p> <p>Table 1 to this 2012 JORC Section contains drill hole information on DRAC35, DRAC38 and DDNRC002 which were the first drill holes at the East Laverton Property to identify nickel sulphides.</p>
Data aggregation methods	<p>In reporting Exploration Results, weighting averaging techniques, maximum and/or minimum grade truncations (e.g. cutting of high grades) and cut-off grades are usually Material and should be stated.</p>	<p>No top-cuts have been applied. A nominal 0.15% Ni lower cut-off is applied unless otherwise indicated.</p>
	<p>Where aggregated intercepts incorporate short lengths of high grade results and longer lengths of low grade results, the procedure used for such aggregation should be stated and some typical examples of such aggregations should be shown in detail.</p>	<p>High grade massive sulphide intervals internal to broader zones of sulphide mineralisation are reported as included intervals.</p>
	<p>The assumptions used for any reporting of metal equivalent values should be clearly stated.</p>	<p>No metal equivalent values are used for reporting exploration results.</p>
Relationship between mineralisation widths and intercept lengths	<p>These relationships are particularly important in the reporting of exploration results. If the geometry of the mineralisation with respect to the drill hole angle is known, its nature should be reported. If it is not known and only the down hole lengths are reported, there should be a clear statement to this effect (e.g. 'down hole length, true width not known').</p>	<p>The geometry of the mineralisation is not yet known due to insufficient deep drilling in the targeted area.</p>
Diagrams	<p>Appropriate maps and sections (with scales) and tabulations of intercepts should be included for any significant discovery being reported. These should include, but not be limited to a plane view of drill hole collar locations and appropriate sectional views.</p>	<p>Maps will be included with any announcement of any significant discovery, following review of assay results from the drilling programme.</p>
Balanced Reporting	<p>Where comprehensive reporting of all Exploration Results is not practical, representative reporting of both low and high grades and/or widths should be practiced to avoid misleading reporting of Exploration Results.</p>	<p>A comprehensive report on the drill holes will be provided once laboratory assays are received. A balanced report on the exploration results available to date is contained in the body of the ASX Release.</p> <p>References to anomalous levels of any element identified by XRF analysis means that the element is present at a level that exceeds the level to be normally expected for that element in that geological setting.</p>

Criteria	JORC Code explanation	Commentary
		<p>The determinations made using a mobile XRF unit are geochemical in nature. This mode of sampling seeks to define anomalous sample populations against background, rather than absolute sample values as in laboratory assays.</p> <p>A more definitive report on any anomalous levels of any element will be provided once laboratory assays for the drill holes are received.</p>
Other substantive exploration data	<i>Other exploration data, if meaningful and material, should be reported including (but not limited to): geological observation; geophysical survey results; geochemical survey results; bulk samples – size and method of treatment; metallurgical test results; bulk density, groundwater, geotechnical and rock characteristics; potential deleterious or contaminating substances.</i>	All meaningful and material information has been included in the body of the text. No metallurgical or mineralogical assessments have been completed.
Further Work	<p><i>The nature and scale of planned further work (e.g. tests for lateral extensions or depth extensions or large – scale step – out drilling).</i></p> <p><i>Diagrams clearly highlighting the areas of possible extensions, including the main geological interpretations and future drilling areas, provided this information is not commercially sensitive.</i></p>	A discussion of further exploration work is contained in the body of the ASX Release.

HOLE ID	NORTHIN G (m)	EASTIN G (m)	DIP (deg)	AZM (deg)	DEPT H (m)	FROM (m)	TO (m)	WIDTH (m)	Ni (%)	Cu (ppm)	Pt+Pd (ppb)
DRAC35	6739401	527150	-60	250	244	100	118	18	0.40	342	197
						100	104	4	0.57	366	294
						112	114	2	0.51	584	281
DRAC38	6733696	530786	-60	250	298	108	138	30	0.31	10	31
						132	138	6	0.48	40	48
						132	134	2	0.62	92	53
DDNRC002	6742718	523717	-60	59	246	53	60	7	0.54		
						53	55	2	1.08		

Table 1 to 2012 JORC Section – Significant intersections in DRAC35, DRAC38 and DDNRC002.

These historical holes are the first identification of nickel sulphides at the East Laverton Property. For further details on DRAC35 and DRAC38, see the ASX Release dated 25 October 2012 “Drill Results at Project Dragon”. For further details on DDNRC002, see the ASX Release dated 11 April 2013 “St George Provides Exploration Update”. These ASX Releases are available to view on the Company’s website at www.stgm.om.au