



ST GEORGE
MINING LIMITED

Nickel-Copper Sulphide Discovery Continues to Grow

25 and 26 June 2018
Proactive Investors CEO Sessions



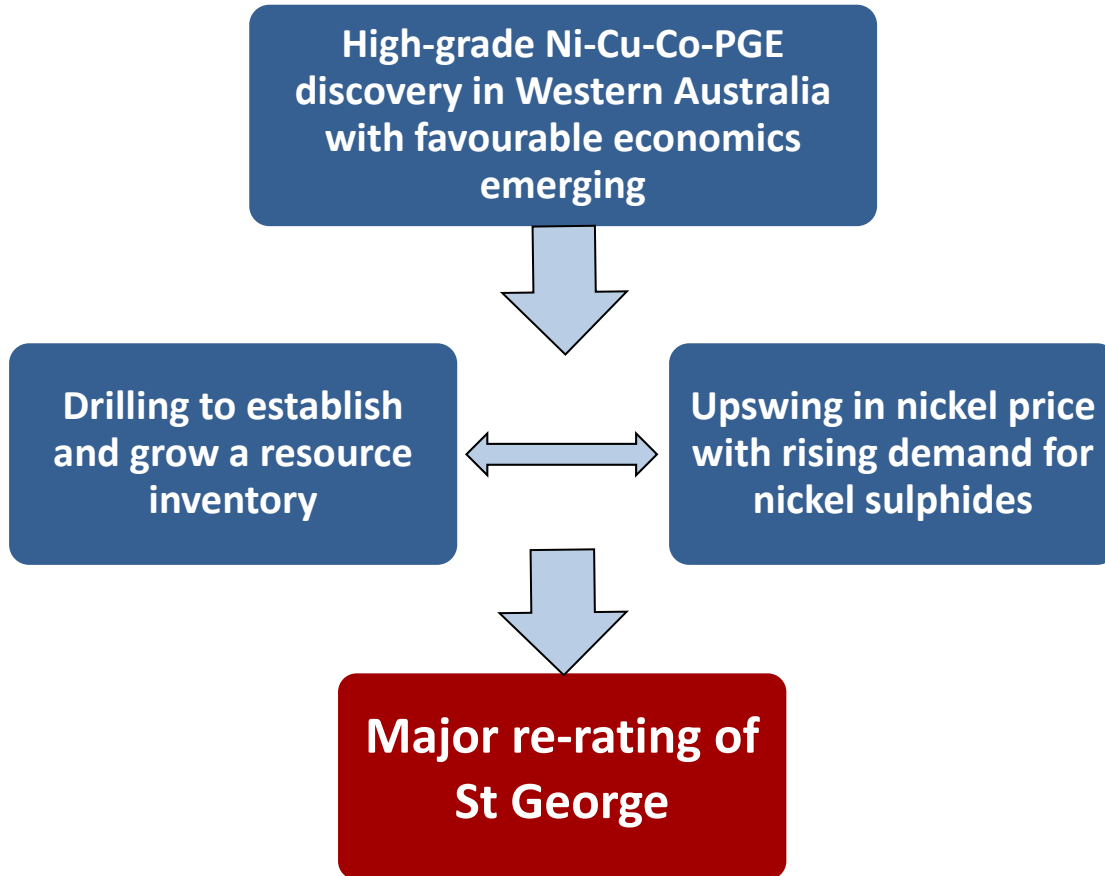
St George Mining Limited | ACN 139 308 973

ASX: SGQ

Investment Opportunity with St George

St George – Growth Nickel Stock

Positioned for Re-rating

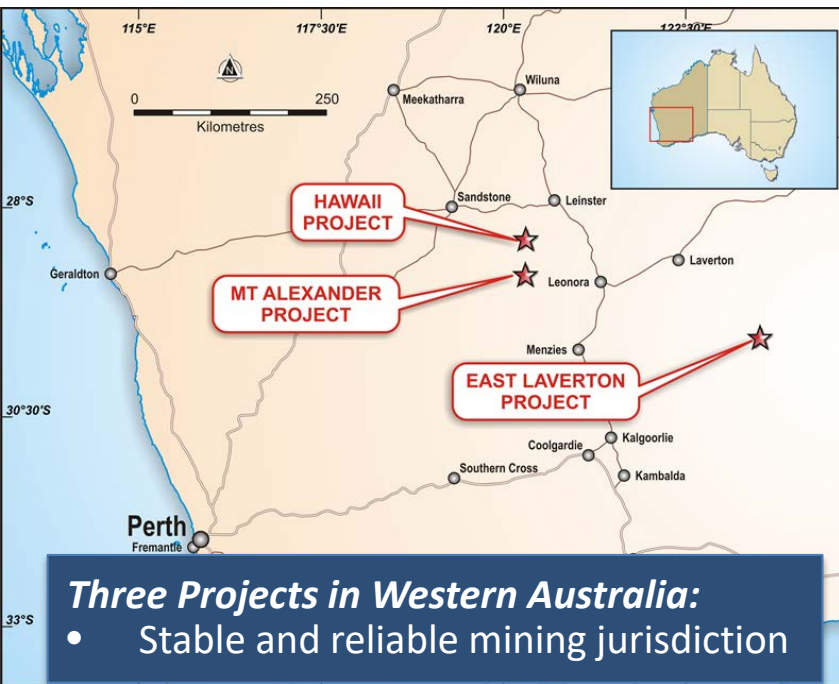


ASX: SGQ www.stgeorgemining.com.au

On right: Diamond drilling at Mt Alexander



Successful Exploration - Overview



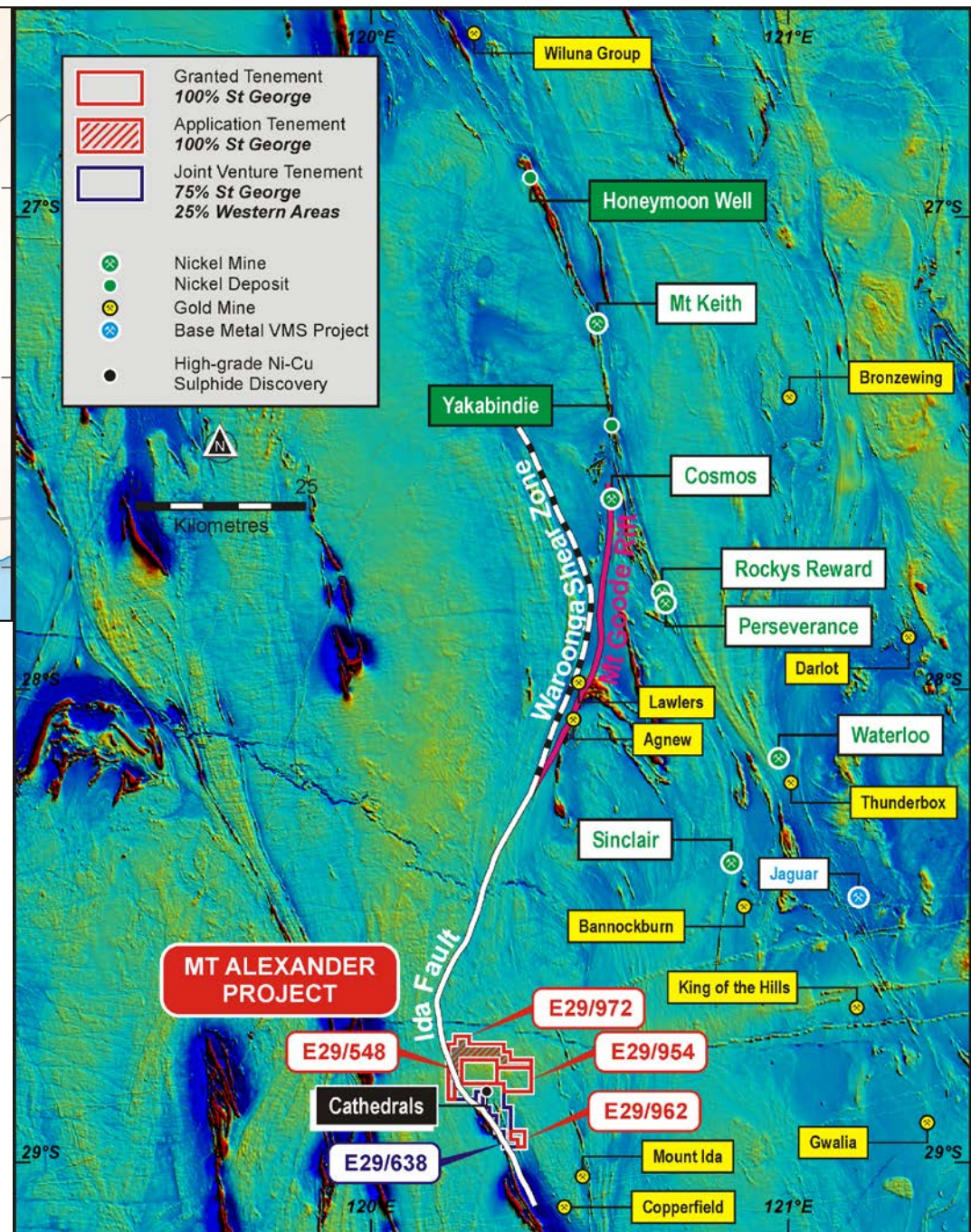
MT ALEXANDER DISCOVERY

- Exceptional discovery in Western Australia
- High-grade nickel-copper sulphides

Favourable Location:

- Located S-SW of world class nickel and gold mines of the Agnew-Wiluna Belt
- Close to infrastructure/processing plants

The Cathedrals, Stricklands and Investigators Prospects are located on E29/638, which is held in joint venture by Western Areas Limited (25%) and St George (75%). St George is the Manager of the Project with Western Areas retaining a 25% non-contributing interest in the Project (in regard to E29/638 only) until there is a decision to mine. St George has 100% of all other tenements at Mt Alexander.



Mt Alexander Project

Australia's Latest Nickel-Copper Sulphide Discovery

Shallow Depths

Mineralisation 30m from surface with ongoing definition drilling; low cost drilling and mining

Large Mineral System

Ni-Cu sulphides over a 4.5km strike of Cathedrals Belt, with 100% success rate in testing EM conductors

High Grade and Polymetallic

Nickel sulphide plus copper, cobalt and PGEs
Key battery/EV metals

Excellent Metallurgy

18%Ni concentrate (plus Co and PGEs)
32%Cu concentrate
Simple flotation process

Exploration Upside

200 km² of underexplored tenement package; ongoing exploration

*On right: Drill core from MAD56. The section of core is from an interval that returned assays of **3.15m @ 6.36%Ni, 2.92%Cu, 0.20%Co and 5.03g/t total PGEs from 61.81m***



High Grade Mineralisation

Thick Intersections

MAD71 (Stricklands Prospect):

17.45m @ 3.01%Ni, 1.31%Cu, 0.13%Co and 1.68g/t total PGEs from 37.45m
including the massive sulphide zones of:

5.3m @ 4.39%Ni, 1.45%Cu, 0.21%Co and 2.09g/t total PGEs from 39.3m;

2.02m @ 5.05%Ni, 2.01%Cu, 0.21%Co and 3.31g/t total PGEs from 50.6m; and

0.5m @ 3.68%Ni, 3.9%Cu, 0.17%Co and 2.68g/t total PGEs from 54.4m.

MAD56 (Cathedrals Prospect):

7.5m @ 3.90%Ni, 1.74%Cu, 0.12%Co and 3.32g/t total PGEs from 57.8m
including

3.15m @ 6.36%Ni, 2.92%Cu, 0.20%Co and 5.03g/t total PGEs from 61.81m

MAD60 (Investigators Prospect) – photo on right:

5.3m @ 4.95%Ni, 2.75%Cu, 0.16%Co and 4.55g/t total PGEs from 157.9m
including

3m @ 6.40%Ni, 3.55%Cu, 0.21%Co and 5.25g/t total PGEs from 159.38m

- *Drilling is ongoing*
- *Drill programme expanded with multiple rigs in action*



Metallurgical Testwork

Positive Results from Initial Test

High Recoveries from Ore:

- >99% recoveries of Ni and Cu to concentrates from preliminary testwork on massive sulphides
- No deleterious elements like MgO or arsenic
(*on right: copper being floated in the metallurgical test completed by Strategic Metallurgy Pty Ltd*)
- Standard flotation process to concentrates

High Value Concentrate:

- Nickel concentrate with **18%Ni** (*Nova is 13.5%Ni**)
- Copper concentrate with **32%Cu** (*Nova is 29%Cu**)
- Cobalt grade of **0.55%Co** in nickel concentrate
- **PGEs + Au of 13.5 g/t** in nickel concentrate
- **PGEs + Au of 3.2 g/t** in copper concentrate

Clean and high grade concentrate will attract a premium price

** Nova Optimisation Study announced by IGO in ASX Release dated 14 December 2015*



Project Economics

Opportunity for Low Costs/High Margins

Shallow Mineralisation	Existing Infrastructure	Clean Concentrate
✓ Low cost drilling/ low cost potential mining	✓ Nearby processing plants	✓ High grade Ni and Cu plus cobalt and PGEs
✓ Well defined zones of mineralisation	✓ Close to existing roads, power	✓ Excellent metallurgy



Strong indications for favourable project economics which will be assessed by scoping/feasibility studies

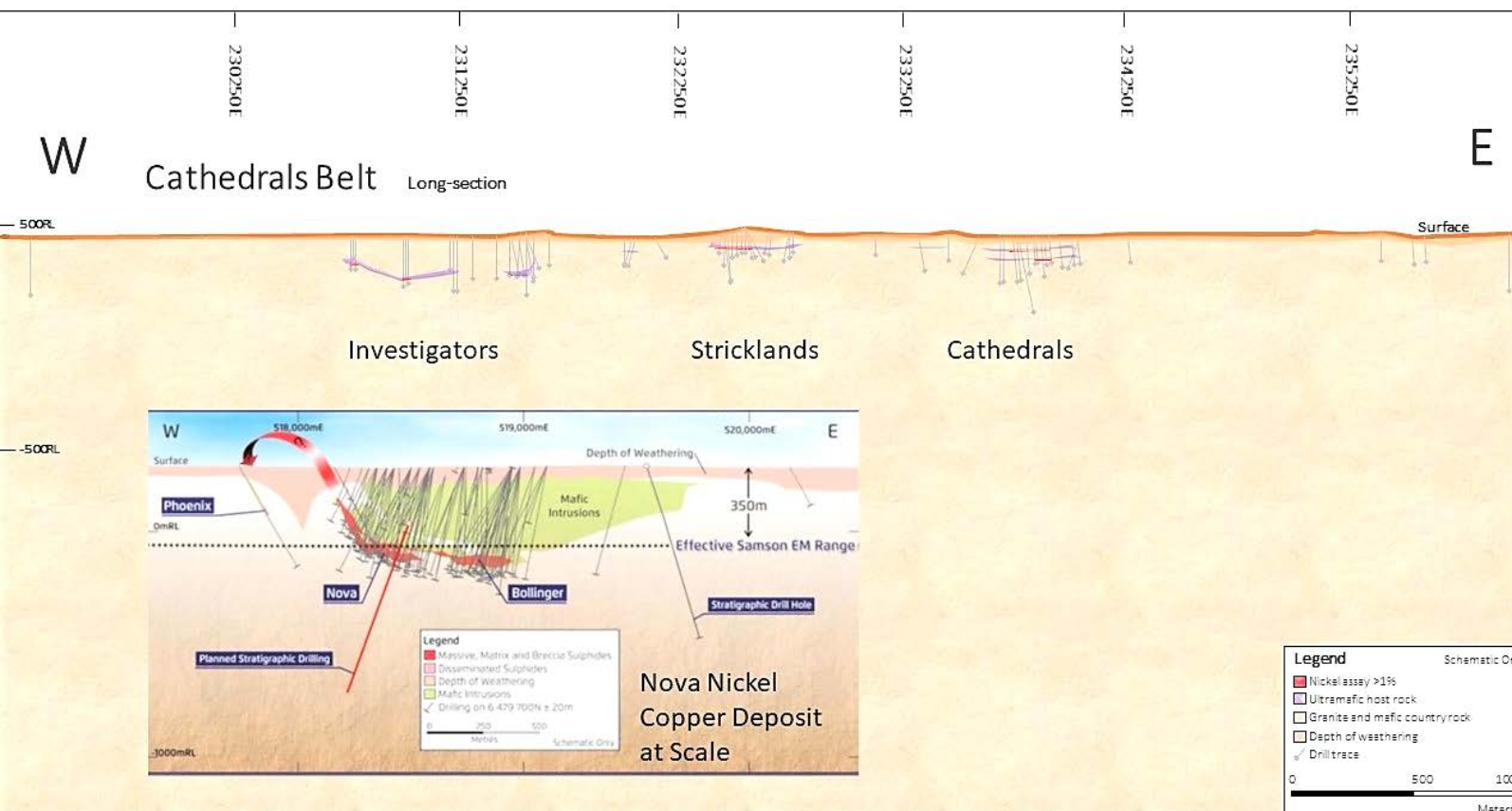
Left: Tim King Pit at Spotted Quoll mine at Forresteria (owned 100% by Western Areas Limited) where high grade nickel sulphides were mined from 60m below surface

Drill Programme - Expanded

Large Mineral System

Drillout Continues across the Cathedrals Belt

- **4.5km strike of sulphide mineralisation at Cathedrals Belt**
- **Longer strike of mineralisation than Nova (circa. 1km strike)** (see Presentation dated 15 May 2018 by Independence Group NL; inset of Nova below is taken from that Presentation)
- **Mineralisation at Cathedrals starts 30m from surface with potential for repetition and extension at depth**



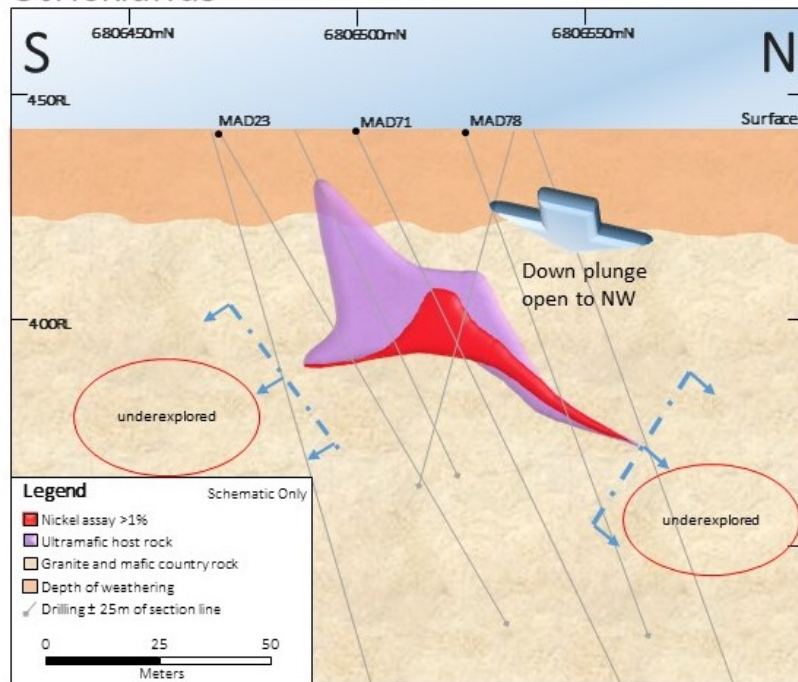
Left: Schematic diagram of the Cathedrals Belt (based on drill hole data to date) shown at the same scale as the Nova deposit in the inset diagram (Nova Ni resource of approx. 270,000t contained Ni). The comparison shows the longer strike of mineralisation at Cathedrals with large areas untested along strike and at depth. Nova shown as scale and an exploration stage comparative, not as a direct analogue.

Stricklands Prospect

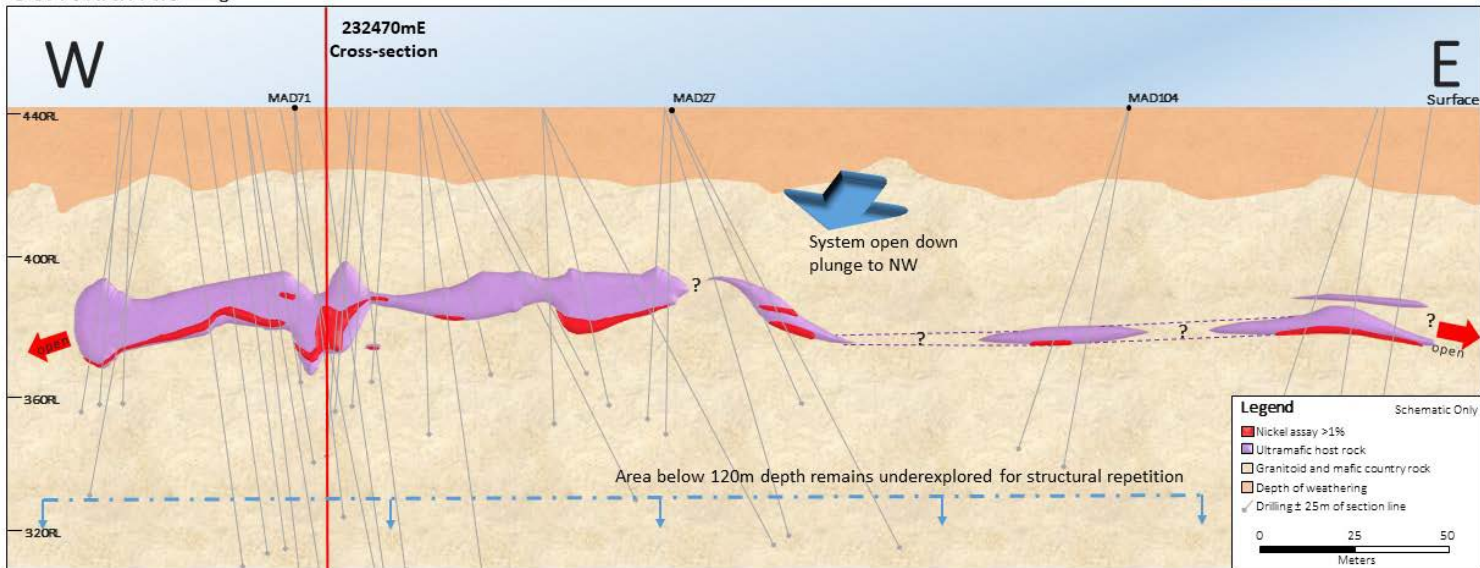
Definition Drilling Underway

- +400m strike of mineralisation
- Large areas remain undrilled with mineralisation open to east, north and west
- Potential for extensions along strike and at depth
- RC and diamond drilling being escalated
- MAD71 section points to a potential down plunge extension

Stricklands Cross-section 232470E



Stricklands Long-section

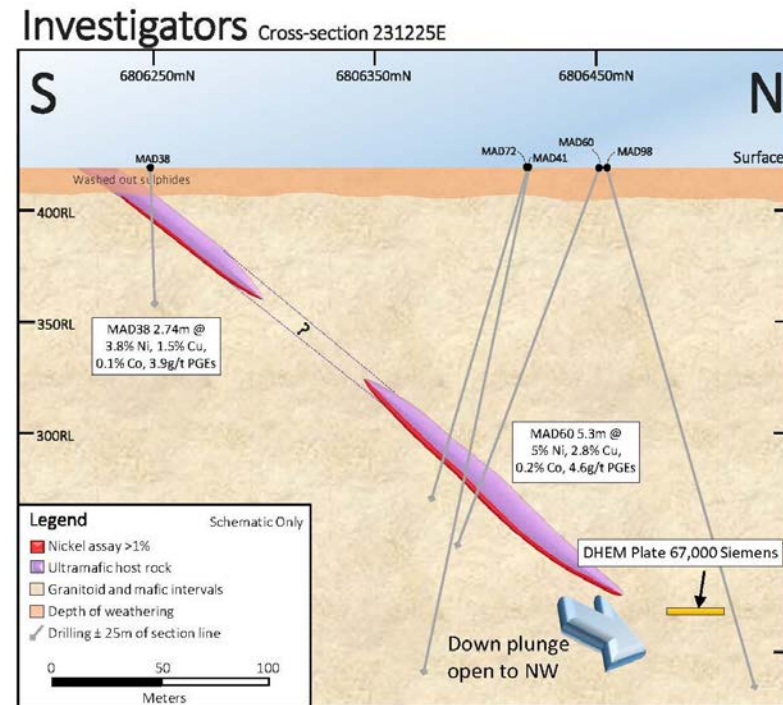


Above: Schematic cross section of the MAD71/MAD85 line (facing west) at Stricklands based on drill hole data. The mineralised ultramafic dips to the north-west with potential for a down plunge extension. Left: long section of Stricklands highlights the multiple intersections of +1% Ni mineralisation over a 400m strike.

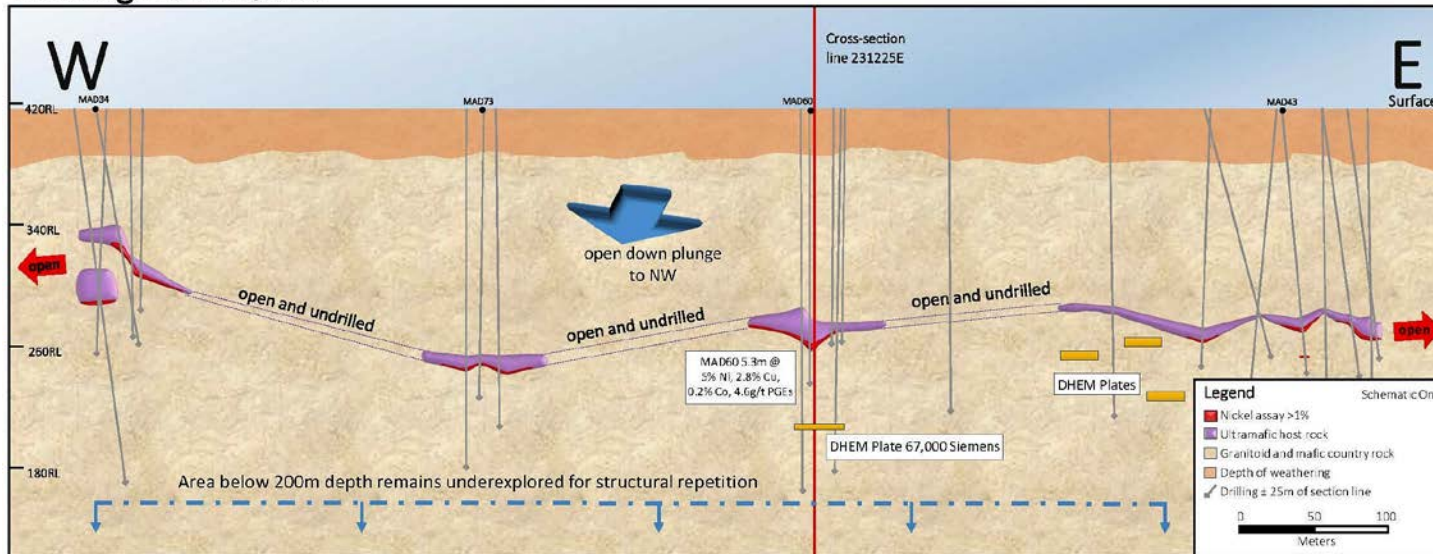
Investigators Prospect

New EM Conductors

- Multiple high-grade intersections over a 1,300m strike
- Large areas remain undrilled with mineralisation open to east, north and west
- New EM conductors support potential for further high-grade nickel-copper sulphides
- Very strong 67,000 Siemens conductor is down plunge from the best intersection at Investigators



Investigators Long-section



Above: Schematic cross section of the MAD60 line (facing west). The mineralised ultramafic dips to the north-west with potential for a down plunge extension, where the new 67,000S EM conductor is located. Left: long section of a 1,000m portion of Investigators highlighting the multiple intersections of +1% Ni mineralisation and the new EM conductors to be drilled.

Drill Programme Expanded

Drilling Resumes Shortly



- *Diamond drilling planned to commence at Investigators on 8 July 2018*
- *RC and diamond drilling to commence at Stricklands shortly thereafter*

Left: diamond drill rig at Stricklands.

Nickel – It's Time

Nickel Market

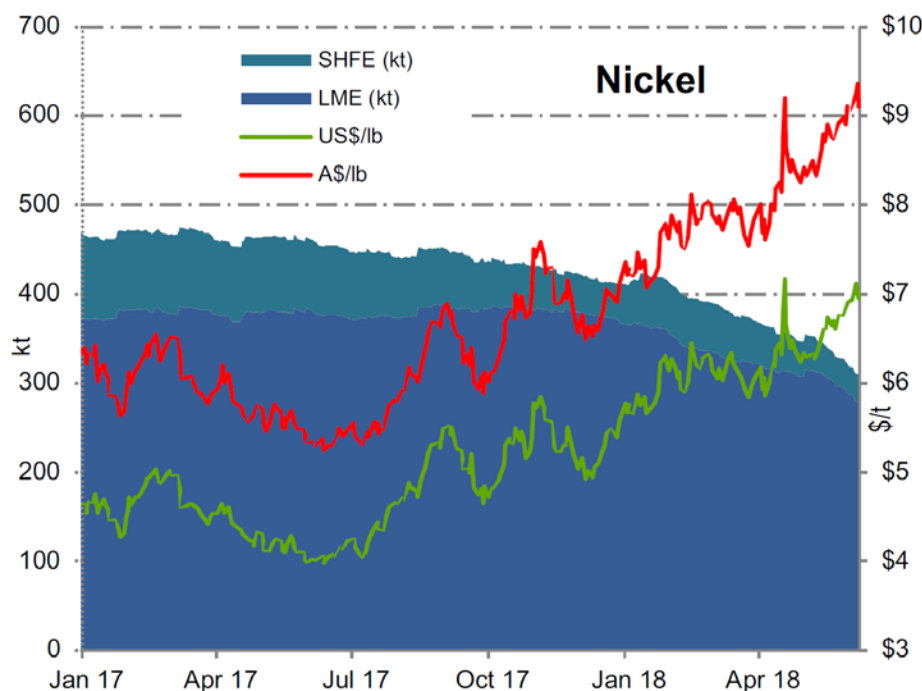
Upswing in Cycle is Underway

Wood Mackenzie, Global Nickel Long-term Outlook, Dec 2017:

“We continue to forecast a nickel outlook of deepening deficits, falling stocks and rising prices.”

“Prices will continue to rise as the market remains undersupplied and stocks are worked off.”

“We envisage nickel prices ultimately reaching an annual average peak of approx. US\$25,000/t (US\$11.30/lb; real US\$2017) by 2025 before settling at our long-term incentive price of US\$21,000/t (US\$9.50/lb, real).”



Source: CME, LME, RBS, SHFE, presented by Terra Studio
10 June 2018

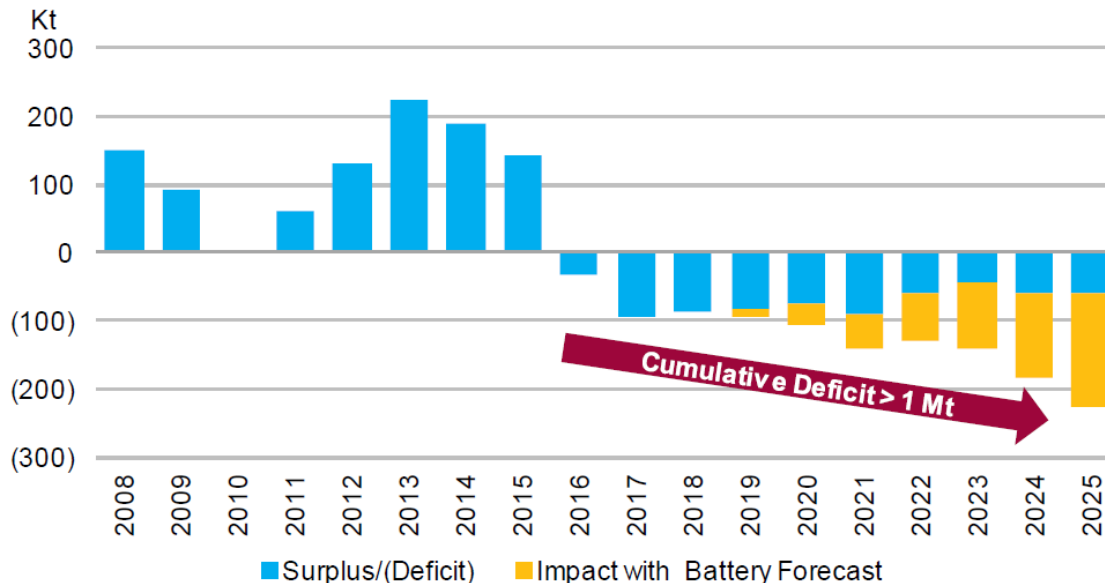
EV Demand for Nickel

Market Dynamics About to Change

Demand Rises on Electric Vehicle Revolution:

- Nickel sulphide (Class 1 nickel) is required for EV batteries; nickel pig iron, etc (Class 2) is not suitable for batteries
- 1Mt deficit in 2025 = price pressure
- Price divergence likely with nickel sulphide attracting a premium price

Global Nickel Supply/Demand Balance with Battery Forecast



Source: McKinsey Basic Materials Institute

McKinsey & Co, The Future of Nickel: A Class Act, Nov 2017:

“A shortfall in class 1 nickel productions seems increasingly likely.”

“Not only will nickel prices likely need to move towards incentive pricing but the future pricing mechanism is likely to reflect two distinct products; class 1 and class 2.”

Stop Press: BHP announces increase in nickel production to meet demand in China where EV’s are expanding faster than expected. 90% of BHP production to be sold for batteries: Bloomberg report on 18 April 2018

Nickel Price to Outperform

Upside Compared to Other Metals

Commodity	Units	Current Price	LT Forecast	'Upside' LT v. Current
Cobalt	US\$/t	88,975	43,200	(51%)
Copper	US\$/t	6,880	7,280	5.5%
Nickel	US\$/t	15,208	22,000	45%
Zinc	US\$/t	3,101	2,830	(8.7%)
Lead	US\$/t	2,420	2,250	(7%)

*Nickel
offers
significant
upside*

*Source: Current prices as at 1 June 2018 by Kitco; LT Forecasts by Wood Mackenzie
(nickel forecast revised upwards in 2018 to US\$22,000/t)*

Nickel Price Targets:

- Wood Mackenzie long-term forecast – **US\$22,000/t**
- High in previous cycle (March 2007) – **US\$54,000/t**

St George – Corporate Overview

St George - Market Profile

Strong shareholder base and market support

Listed shares (SGQ): 278,780,500
Listed options (SGQOB): 24,579,714
 SGQOB - exercise price of 20c, expiring on 30 Sept 2020.

Share Ownership
 Top 10: 19% Top 20: 27%
 Directors: 6%

Market cap: **A\$39m** (@14c per share)
Cash: **A\$3m** (at 22 June 2018)*
 *\$2.5m new funds raised on 25 June 2018

Largest Shareholders
 Impulzive: 4.5% City Natural Res's: 3%
 John Prineas: 4.4% Oceanic Capital: 3%

Broad Shareholder Base

Over 3,500 shareholders including Australian and overseas institutions, high net worth and retail investors



- **Drilling is ongoing**
- **Assays pending**
- **Strong newsflow continues**

Highly Qualified Team

Track Record of Exploration Success

Directors, Management and Consultants

John PRINEAS, Executive Chairman – founding shareholder with over 25 years experience in mining, and the banking and legal sectors servicing the resources industry.

Tim HRONSKY, Technical Director - over 25 years as a geologist in the global exploration and mining industry, including 15 years with Placer Dome Inc.

Sarah SHIPWAY, Non-executive Director/Company Secretary - Chartered Accountant with extensive experience in advising listed exploration companies.

Charles WILKINSON, Technical Consultant – over 32 years' experience as a geologist in the mining industry. 16 years at WMC Resources including Exploration Manager - Nickel Exploration Australia. Joined Western Areas Limited in 2008 as General Manager Exploration. During his 9 years at WSA, the company developed the Spotted Quoll deposit, significantly grew its resource inventory and became Australia's No. 1 independent nickel sulphide producer.

Newexco - Leading geophysical consultants in nickel sulphide exploration. Advisers on Nova-Bollinger deposit for Sirius Resources NL, and the Spotted Quoll and Flying Fox deposits for Western Areas Limited (ASX: WSA).

Dr Jon HRONSKY, Consultant - Chairman of the Centre for Exploration Targeting in WA, adviser on exploration targeting. Previously, Manager-Strategy & Generative Services for BHP Billiton Mineral Exploration.



Massive nickel-copper sulphide intersection in MAD40 that graded 7.88%Ni and 3.11%Cu

DISCLAIMER:

Certain statements contained in this presentation, including information as to the future financial or operating performance of St George Mining Limited (ASX:SGQ) and its projects, are forward looking statements:

- may include, among other things, statements regarding targets, estimates and assumptions in respect of mineral reserves and mineral resources and anticipated grades and recovery rates, production and prices, recovery costs and results, capital expenditures, and are or may be based on assumptions and estimates related to future technical, economic, market, political, social and other conditions;
- are necessarily based upon a number of estimates and assumptions that, while considered reasonable by St George Mining, are inherently subject to significant technical, business, economic, competitive, political and social uncertainties and contingencies; and
- involve known and unknown risks and uncertainties that could cause actual events or results to differ materially from estimated or anticipated events or results reflected in such forward looking statements.

St George Mining disclaims any intent or obligation to update publicly any forward looking statements, whether as a result of new information, future events or results or otherwise. The words “believe”, “expect”, “anticipate”, “indicate”, “contemplate”, “target”, “plan”, “intends”, “continue”, “budget”, “estimate”, “may”, “will”, “schedule” and similar expressions identify forward looking statements.

All forward looking statements made in this presentation are qualified by the foregoing cautionary statements. Investors are cautioned that forward looking statements are not guarantees of future performance and investors are cautioned not to put undue reliance on forward looking statements due to the inherent uncertainty therein.

COMPETENT PERSON STATEMENT:

The information in this report that relates to Exploration Targets, Exploration Results, Mineral Resources or Ore Reserves is based on information compiled by Mr Tim Hronsky, a Competent Person who is a Member of The Australasian Institute of Mining and Metallurgy. Mr Tim Hronsky is employed by Essential Risk Solutions Ltd which has been retained by St George Mining Limited to provide technical advice on mineral projects.

The information in this report that relates to Exploration Targets, Exploration Results, Mineral Resources or Ore Reserves regarding the Hawaii and Mt Alexander Projects is based on information compiled by Mr Matthew McCarthy, a Competent Person who is a Member of The Australasian Institute of Geoscientists. Mr McCarthy is employed by St George Mining Limited.

This ASX announcement contains information extracted from the following reports which are available on the Company’s website at www.stgm.com.au:

-
- 5 July 2017 *High Grade Nickel-Copper-Cobalt-PGEs at Investigators*
- 19 July 2017 *High Grade Nickel-Copper-Cobalt-PGEs at Investigators*
- 12 September 2017 *Mt Alexander – Exploration Update*
- 26 October 2017 *Drilling Commences at Mt Alexander*
- 13 November 2017 *Further High Grade Mineralisation at Mt Alexander*
- 20 November 2017 *Outstanding Intersection of Nickel-Copper Sulphides*
- 30 November 2017 *Drilling at Mt Alexander – Update*
- 7 December 2017 *Further Nickel-Copper Sulphides Intersected at Mt Alexander*
- 15 December 2017 *Assays Confirm Best Ever Intersection at Mt Alexander*
- 19 March 2018 *Drilling of Nickel-Copper Sulphide Targets at Mt Alexander Resumes*
- 4 April 2018 *Nickel-Copper Sulphide Drilling at Mt Alexander – Update*
- 11 April 2018 *Further Nickel-Copper Sulphides Intersected at Mt Alexander*
- 19 May 2018 *Nickel-Copper Sulphide Drilling at Mt Alexander – Update*
- 4 June 2018 *Assays Confirm High Grades at Mt Alexander*
- 19 June 2018 *New EM Conductors Ready for Drilling at Mt Alexander*
- 21 June 2018 *Assays Confirm Further High Grades at Mt Alexander*
- 25 June 2018 *Drill Programme Expanded at Mt Alexander*

The Company confirms that it is not aware of any new information or data that materially affects the exploration results included in any original market announcements referred to in this report and that no material change in the results has occurred. The Company confirms that the form and context in which the Competent Person’s findings are presented have not been materially modified from the original market announcements.