

5 June 2020

ST GEORGE STEPS UP PACE OF DRILLING AT MT ALEXANDER

Large nickel-copper sulphide target identified at Fish Hook Prospect:

- Large conductive feature has been identified at Fish Hook by the just-completed magnetotelluric (MT) and audio-magnetotelluric (AMT) surveys
- The new conductive feature is located below the high-order nickel-copper soil anomaly at Fish Hook and is modelled to dip to the north-west, consistent with the known ultramafic stratigraphy elsewhere in the Cathedrals Belt
- Seven reverse circulation (RC) reconnaissance drill holes have been completed at Fish Hook but were too shallow to intersect the new conductive feature, which commences 250m below surface
- Additional drilling is planned at Fish Hook to test this compelling target for nickel-copper sulphides

Diamond drilling scheduled to commence this weekend:

- The first of two diamond drill rigs is due to arrive at site over the weekend, with the second diamond drill rig expected shortly
- Diamond drilling will focus on testing the new, deeper conductive features identified by the MT/AMT surveys with targets at the Investigators Prospect the first of the deeper nickel-copper sulphide targets to be drilled
- Metallurgical drill holes will also be completed by diamond drilling at the Stricklands Prospect as part of the scoping study into a potential mining operation

Resource definition drilling is underway:

- RC drilling has commenced at the shallow, high-grade Stricklands deposit to support a JORC-compliant resource estimate expected to be announced in Q4 2020

Growth focused Western Australian nickel company St George Mining Limited (ASX: **SGQ**) (“**St George**” or “**the Company**”) is pleased to provide an update on drilling and exploration programmes at its flagship Mt Alexander Project, located in the north-eastern Goldfields.

Very encouraging results have been delivered by the latest data from the additional magnetotelluric (MT) and audio-magnetotelluric (AMT) surveys completed at the Fish Hook Prospect. Modelling of the survey data has identified a large conductive feature in a location that is geologically favourable for a potential extension of the mineralised Cathedrals Belt.

New Conductive Target at Fish Hook:

The new conductive anomaly is located below the large and coherent nickel-copper soil anomaly identified at Fish Hook in 2019. Assays for this geochemical footprint returned highly anomalous values for nickel and copper as well as chrome – which is supportive of the potential presence of ultramafic with nickel-copper sulphides. For more on the soil survey, please see our ASX Release dated 8 November 2019 *More High-Grade Nickel Targets at Mt Alexander*.

The additional MT/AMT surveys completed in May 2020 included an east-west oriented survey line that extended across the strike of the Cathedrals Belt from the Bullets Prospect in the west to the Fish Hook Prospect in the east. North-south survey lines were also completed across the Fairbridge/Cathedrals, Fish Hook and West End Prospects. At Fish Hook, the north-south line (Cross Section A) was completed over the high-order nickel-copper soil anomaly.

Detailed 3D inversion modelling of the survey data for Fish Hook has confirmed a large conductive feature commencing at approximately 250m below surface and extending to more than 750m below surface. The core of the conductive feature is interpreted to be at 400m to 600m below surface.

Figure 1 is a section of the Fish Hook Prospect showing MT/AMT data where the north-south survey line was completed. Areas of blue colour represent highly resistive granite and areas of yellow/green represent conductive features.

The conductive anomaly is modelled as dipping to the north-west, which is consistent with the known mineralised ultramafic intrusives intersected by drilling in other parts of the Cathedrals Belt.

Four of the recently completed RC drill holes at Fish Hook were drilled in the vicinity of the conductive feature and were designed to test shallow magnetic and electromagnetic (EM) targets. These drill holes were planned prior to the MT/AMT data being available and did not intersect the new and deeper conductive target; see Figure 1.

The new conductive feature is a compelling target for potential nickel-copper sulphides and will be prioritised for diamond drilling soon.

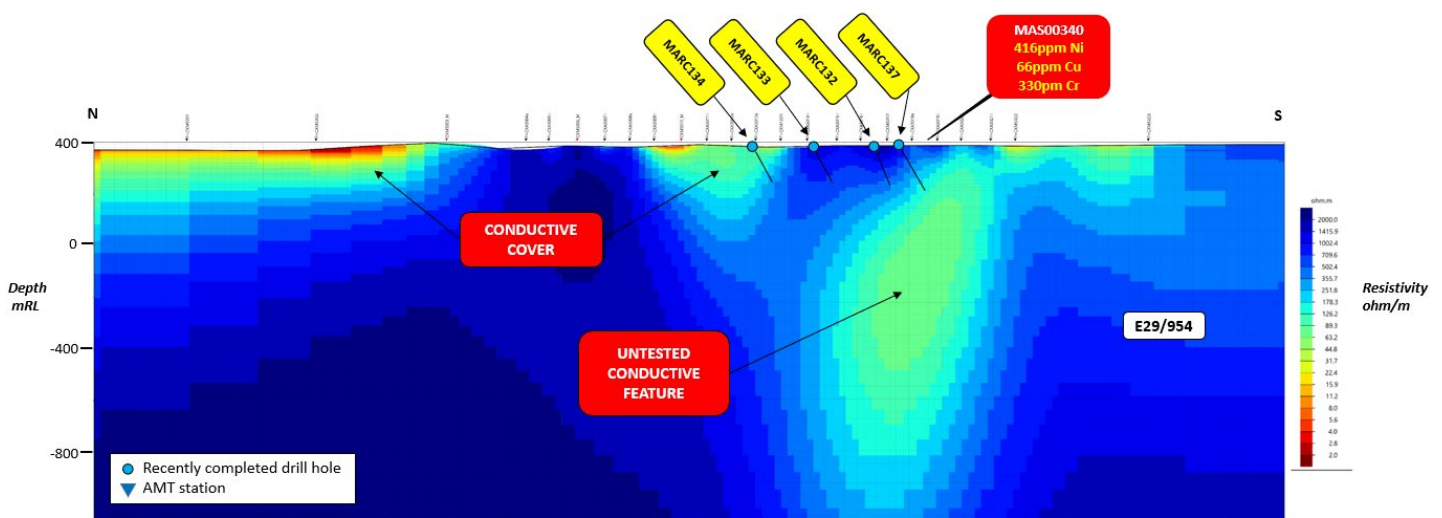


Figure 1 – north-south Cross Section A (looking east) of the Fish Hook Prospect with MT/AMT 3D inversion modelling of the survey data, showing a large conductive feature below the depth of recently completed drilling, and below the high-order nickel-copper soil anomaly.

Drilling at Fish Hook:

Seven broadly-spaced RC reconnaissance drill holes have been completed at Fish Hook, each to an approximate depth of 150m – which is the depth limit of the RC rig for the hard rock, granitic terrain at Fish Hook.

Two of the drill holes (MARC133 and MARC138) intersected mafic intrusives within largely granitic rocks. Three of the drill holes (MARC134, MARC135 and MARC136) intersected conductive cover (and mostly granite) and are coincident with low-order EM anomalies.

The remaining two drill holes (MARC132 and MARC137) targeted the soil anomaly and intersected felsic porphyry +/- sulphide (MARC132 between 105m-126m downhole and MARC137 between 16m-37m downhole) and faults.

Drill hole details are shown in Table 1 below. Nickel-copper sulphides were not intersected in any of the drill holes.

Figure 2 is a plan view map of the area within the large Fish Hook Prospect that was recently drilled. The map shows the collars for the completed drill holes as well as the surface expression of the MT/AMT data (modelled at approximately 400m depth) for the north-south survey line at Fish Hook.

The conductive zone in the MT/AMT data is co-incident with the nickel-copper soil anomaly at Fish Hook, further supporting the potential for nickel-copper sulphide mineralisation at depth.

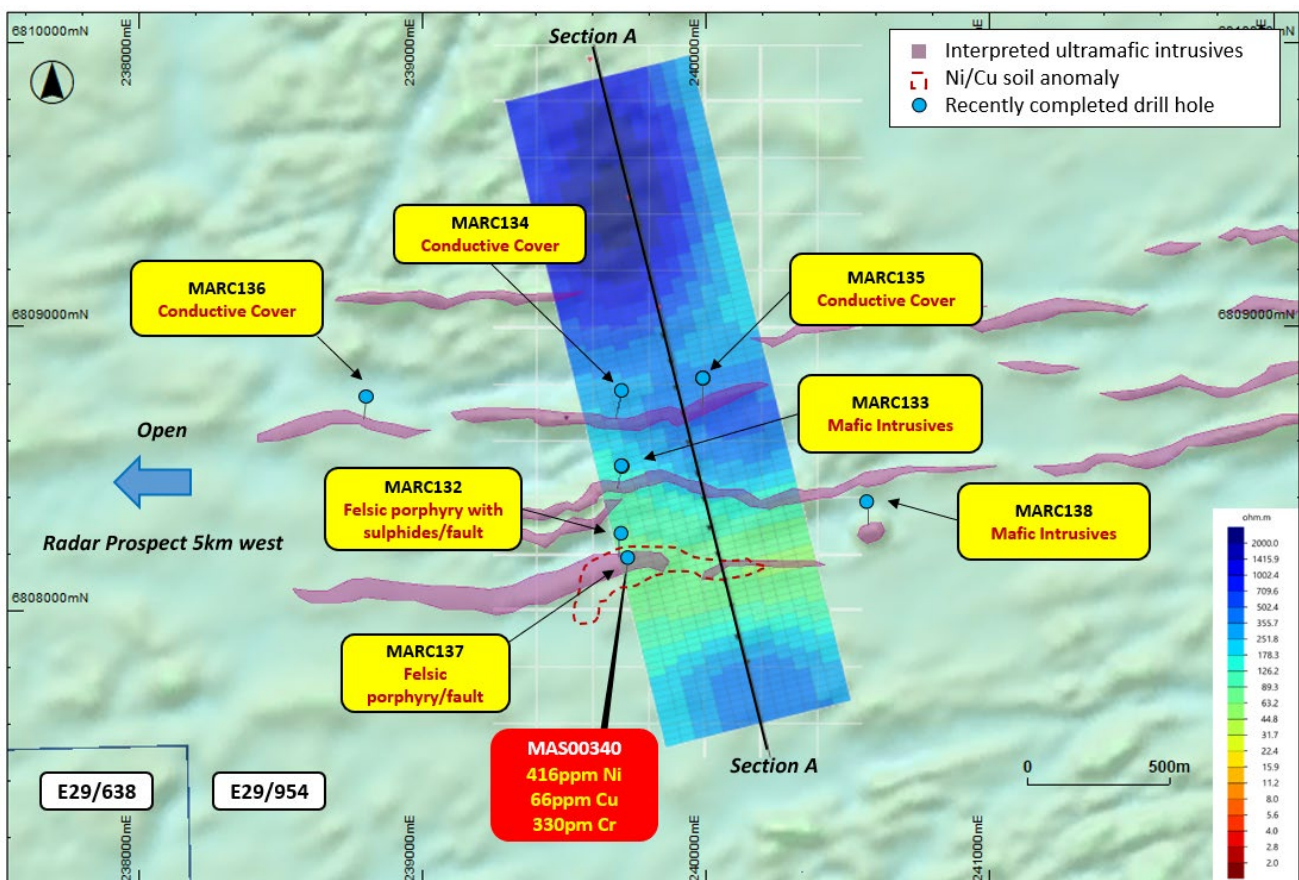


Figure 2 – plan view map of the area at the large Fish Hook Prospect recently tested by RC drilling. Drill hole collars are shown, as well as the nickel-copper soil anomaly and the modelled MT/AMT survey data projected to surface.

The mafic intrusives intersected by the RC drilling may be associated with the mineralised system identified in other parts of the Cathedrals Belt, and the presence of felsic intrusives and extensive faulting suggests structural complexity in the target area.

Further drilling will be scheduled at Fish Hook, with a focus on the new conductive MT/AMT anomaly.

John Prineas, St George Mining’s Executive Chairman, said:

“We are very pleased to be ramping up the drill campaign at Mt Alexander.

“Diamond drilling of the deeper MT conductive targets will start shortly and we are excited to have another high-quality target to drill at the Fish Hook Prospect.

“The resource drill-out at Stricklands is also underway and we look forward to completing the scoping study for what we believe could be a low-capex, high-margin mining operation at Stricklands.

“This is an exciting time for St George Mining.”

Drill Programme Escalates:

Table 1 shows details of the RC drilling completed at Fish Hook.

The first of two diamond drill rigs is due to arrive at site this weekend with drilling to commence immediately. A second diamond rig is expected later this month.

Figure 3 below shows the planned drill hole collars for the deep MT/AMT targets that will be initially tested by diamond drilling. The deeper holes testing the MT/AMT target at Fish Hook will be planned upon completion of downhole EM surveys in the recently completed RC drill holes.

Six metallurgical drill holes will also be completed by diamond drilling at Stricklands.

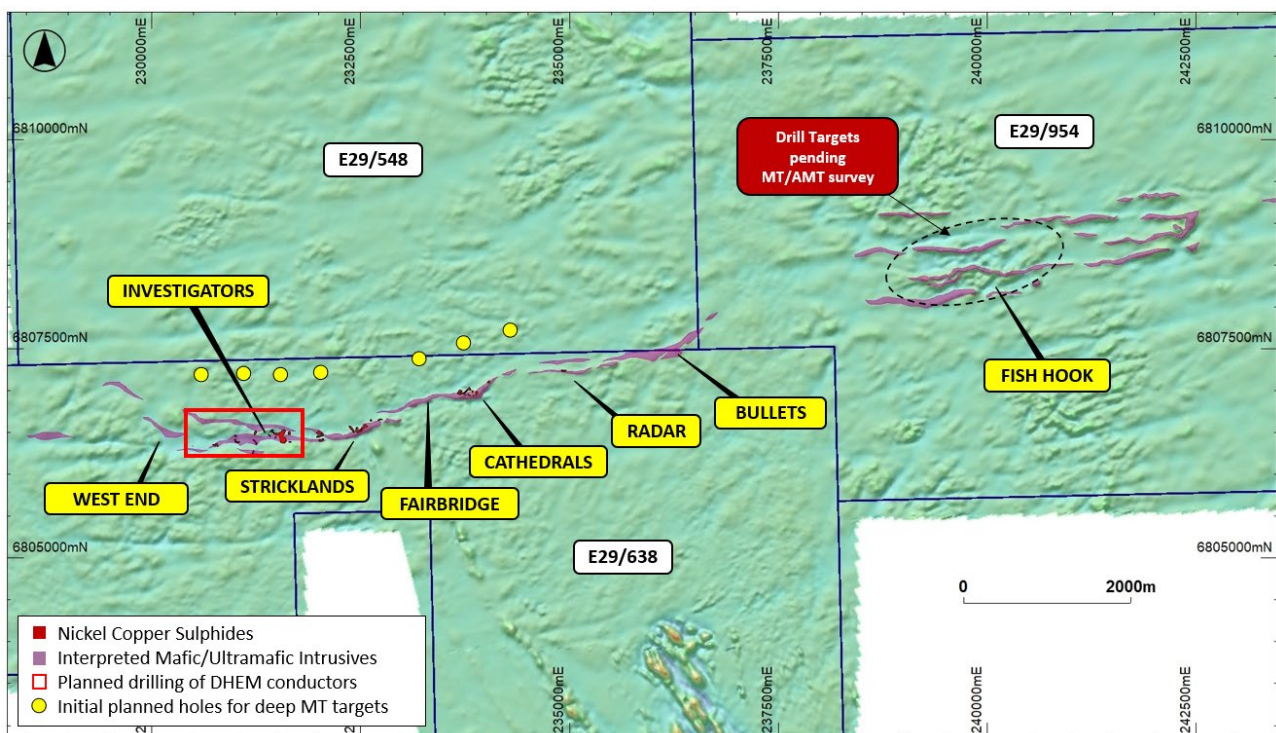


Figure 3 - map of the Cathedrals Belt showing areas of planned drilling and overlaying interpreted geology and magnetics (TMI RTP 1VD).

Additional MT/AMT Survey:

Modelling of the remaining MT/AMT survey data is progressing and further results are expected next week.

Drill targets will be designed for West End and Fairbridge/Cathedrals once the new data is reviewed.

Resource Definition at Stricklands:

RC drilling is underway to complete a resource drill-out of the shallow, high-grade deposit at Stricklands which commences 30m from surface. Approximately 3,000m of RC drilling is planned at Stricklands.

A JORC-compliant resource estimate for Stricklands is expected to be announced in Q4 2020. The resource will be used in the scoping study into a potential low-cost, high-margin mining operation at Mt Alexander.

COVID-19:

St George is managing its operations in compliance with COVID-19 regulations issued by State and Commonwealth authorities. We will continue to proactively manage drilling and other field programmes to protect the health and safety of our team and service providers.

Hole ID	Prospect	East	North	RL	Depth	Azi	Dip	Target
MARC132	Fish Hook	239698	6808250	401	150	-65	180	Geochem Anomaly
MARC133	Fish Hook	239705	6808501	400	147	-60	180	Stratigraphic
MARC134	Fish Hook	239702	6808751	399	165	-60	180	Stratigraphic/EM Anomaly
MARC135	Fish Hook	239999	6808802	399	201	-60	180	Stratigraphic/EM Anomaly
MARC136	Fish Hook	238797	6808783	399	160	180	-60	Strong EM Anomaly
MARC137	Fish Hook	239705	6808184	399	153	180	-60	Geochem Anomaly
MARC138	Fish Hook	240592	6808383	400	201	180	-60	Stratigraphic

Table 1 – Drill holes completed in the current drill programme at Mt Alexander.

About the Mt Alexander Project:

The Mt Alexander Project is located 120km south-southwest of the Agnew-Wiluna Belt, which hosts numerous world-class nickel deposits. The Project comprises five granted exploration licences – E29/638, E29/548, E29/962, E29/954 and E29/972.

The Cathedrals, Stricklands, Investigators and Radar nickel-copper-cobalt-PGE discoveries are located on E29/638, which is held in joint venture by St George Mining Limited (75%) and Western Areas Limited (25%). St George is the Manager of the Project, with Western Areas retaining a 25% non-contributing interest in the Project (in regard to E29/638 only) until there is a decision to mine.

Authorised for release by the Board of St George Mining Limited.

For further information, please contact:

John Prineas

Executive Chairman

St George Mining Limited

+61 411 421 253

john.prineas@stgm.com.au

Peter Klinger

Media and Investor Relations

Cannings Purple

+61 411 251 540

pklinger@canningspurple.com.au

Competent Person Statement:

The information in this report that relates to Exploration Targets, Exploration Results, Mineral Resources or Ore Reserves is based on information compiled by Mr Dave O'Neill, a Competent Person who is a Member of The Australasian Institute of Mining and Metallurgy. Mr O'Neill is employed by St George Mining Limited to provide technical advice on mineral projects, and he holds performance rights issued by the Company.

Mr O'Neill has sufficient experience that is relevant to the style of mineralisation and type of deposit under consideration and to the activity being undertaken to qualify as a Competent Person as defined in the 2012 Edition of the 'Australasian Code for Reporting of Exploration Results, Mineral Resources and Ore Reserves'. Mr O'Neill consents to the inclusion in the report of the matters based on his information in the form and context in which it appears.

The following section is provided for compliance with requirements for the reporting of exploration results under the JORC Code, 2012 Edition.

Section 1 Sampling Techniques and Data

(Criteria in this section apply to all succeeding sections)

Criteria	JORC Code explanation	Commentary
Sampling techniques	<i>Nature and quality of sampling (eg cut channels, random chips, or specific specialised industry standard measurement tools appropriate to the minerals under investigation, such as down hole gamma sondes, or handheld XRF instruments, etc). These examples should not be taken as limiting the broad meaning of sampling.</i>	<p>Drilling programmes are completed by Reverse Circulation (RC) and Diamond Core drilling. Surface MT/AMT surveys were completed by Moombarriga Geophysics.</p> <p><i>Diamond Core Sampling:</i> The sections of the core that are selected for assaying are marked up and then recorded on a sample sheet for cutting and sampling at the certified assay laboratory. Samples of HQ or NQ2 core are cut just to the right of the orientation line where available using a diamond core saw, with half core sampled lengthways for assay.</p> <p><i>RC Sampling:</i> All samples from the RC drilling are taken as 1m samples for laboratory assay.</p> <p><i>MT/AMT Surveying:</i> The surveys were conducted using the Phoenix MTU system and Metronix ADU07e system. The sensors were recorded at 500m intervals with 100m infill over the Investigators Prospect.</p> <p>Two survey lines were recorded, one N-S and one E-W line. The N-S line was centred on the Investigators Prospect and included the 100m infill AMT stations, while the E-W line was completed approx. 500m to the north of the Cathedrals belt to image the stratigraphy down dip of the known nickel-copper deposits.</p> <p>Appropriate QAQC samples (standards, blanks and duplicates) are inserted into the sequences as per industry best practice. Samples are collected using cone or riffle splitter. Geological logging of RC chips is completed at site with representative chips being stored in drill chip trays.</p>
	<i>Include reference to measures taken to ensure sample representivity and the appropriate calibration of any measurement tools or systems used.</i>	<p><i>RC Sampling:</i> Samples are taken on a one metre basis and collected using uniquely numbered calico bags. The remaining material for that metre is collected and stored in a green plastic bag marked with that specific metre interval. The cyclone is cleaned with compressed air after each plastic and calico sample bag is removed. If wet sample or clays are encountered then the cyclone is opened and cleaned manually and with the aid of a compressed air gun. A blank sample is inserted at the beginning of each hole, and a duplicate sample is taken every 50th sample. A certified sample standard is also added according to geology, but at no more than 1:50 samples.</p> <p>Geological logging of RC chips is completed at site with representative chips being stored in drill chip trays. Downhole surveys of dip and azimuth are conducted using a single shot camera every 30m, and using a downhole Gyro when required, to detect deviations of the hole from the planned dip and azimuth. The drill-hole collar locations are recorded using a hand-held GPS, which has an accuracy of +/- 5m. All drill-hole collars will be surveyed to a greater degree of accuracy using a certified surveyor at a later date.</p> <p><i>Diamond Core Sampling:</i> For diamond core samples, certified sample standards were added as every 25th sample. Core recovery calculations are made through a reconciliation of the actual core and the driller's records. Downhole surveys of dip and azimuth were conducted using a single shot camera every 30m to detect deviations of the hole from the planned dip and azimuth. The drill-hole collar locations are recorded using a hand-held GPS, which has an accuracy of +/- 5m.</p>

Criteria	JORC Code explanation	Commentary
	<p><i>Aspects of the determination of mineralisation that are Material to the Public Report.</i></p> <p><i>In cases where 'industry standard' work has been done this would be relatively simple (eg 'reverse circulation drilling was used to obtain 1 m samples from which 3 kg was pulverised to produce a 30 g charge for fire assay'). In other cases more explanation may be required, such as where there is coarse gold that has inherent sampling problems. Unusual commodities or mineralisation types (eg submarine nodules) may warrant disclosure of detailed information.</i></p>	<p><i>RC Sampling:</i> A 1m composite sample is taken from the bulk sample of RC chips that may weigh in excess of 40 kg. Each sample collected for assay typically weighs 2-3kg, and once dried, is prepared for the laboratory as per the Diamond samples below.</p> <p><i>Diamond Core Sampling:</i> Diamond core (both HQ and NQ2) is half-core sampled to geological boundaries no more than 1.5m and no less than 10cm. Samples less than 3kg are crushed to 10mm, dried and then pulverised to 75µm. Samples greater than 3kg are first crushed to 10mm then finely crushed to 3mm and input into the rotary splitters to produce a consistent output weight for pulverisation.</p> <p>Pulverisation produces a 40g charge for fire assay. Elements determined from fire assay are gold (Au), platinum (Pt) and palladium (Pd) with a 1ppb detection limit. To determine other PGE concentrations (Rh, Ru, Os, Ir) a 25g charge for nickel sulphide collect fire assay is used with a 1ppb detection limit.</p> <p>Other elements will be analysed using an acid digest and an ICP finish. These elements are: Ag, Al, As, Bi, Ca, Cd, Co, Cr, Fe, K, Li, Mg, Mn, Mo, Nb, Ni, P, Pb, S, Sb, Sn, Te, Ti, V, W, Zn. The sample is digested with nitric, hydrochloric, hydrofluoric and perchloric acids to effect as near to total solubility of the sample as possible. The sample is then analysed using ICP-AES or ICP-MS.</p> <p>LOI (Loss on Ignition) will be completed on selected samples to determine the percentage of volatiles released during heating of samples to 1000°C.</p>
Drilling techniques	<p><i>Drill type (eg core, reverse circulation, open-hole hammer, rotary air blast, auger, Bangka, sonic, etc) and details (eg core diameter, triple or standard tube, depth of diamond tails, face-sampling bit or other type, whether core is oriented and if so, by what method, etc).</i></p>	<p><i>Diamond Core Sampling:</i> The collars of the diamond holes were drilled using RC drilling down through the regolith to the point of refusal or to a level considered geologically significant to change to core. The hole was then continued using HQ diamond core until the drillers determined that a change to NQ2 coring was required.</p> <p>The core is oriented and marked by the drillers. The core is oriented using ACT Mk II electric core orientation.</p> <p><i>RC Sampling:</i> The RC drilling uses a 140 mm diameter face hammer tool. High capacity air compressors on the drill rig are used to ensure a continuously sealed and high pressure system during drilling to maximise the recovery of the drill cuttings, and to ensure chips remain dry to the maximum extent possible.</p>
Drill sample recovery	<p><i>Method of recording and assessing core and chip sample recoveries and results assessed.</i></p>	<p><i>Diamond Core Sampling:</i> Diamond core recoveries are recorded during drilling and reconciled during the core processing and geological logging. The core length recovered is measured for each run and recorded which is used to calculate core recovery as a percentage.</p> <p><i>RC Sampling:</i> RC samples are visually checked for recovery, moisture and contamination. Geological logging is completed at site with representative RC chips stored in chip trays.</p>
	<p><i>Measures taken to maximise sample recovery and ensure representative nature of the samples.</i></p>	<p><i>RC Sampling:</i> Samples are collected using cone or riffle splitter. Geological logging of RC chips is completed at site with representative chips being stored in drill chip trays.</p> <p><i>Diamond Core Sampling:</i> Measures taken to maximise core recovery include using appropriate core diameter and shorter barrel length through the weathered zone, which at Cathedrals and Investigators is mostly <20m and Stricklands <40m depth. Primary locations for core loss in fresh rock are on geological contacts and structural zones, and drill techniques are adjusted accordingly, and if possible these zones are predicted from the geological modelling.</p>

Criteria	JORC Code explanation	Commentary
	<i>Whether a relationship exists between sample recovery and grade and whether sample bias may have occurred due to preferential loss/gain of fine/coarse material.</i>	To date, no sample recovery issues have yet been identified that would impact on potential sample bias in the competent fresh rocks that host the mineralised sulphide intervals.
Logging	<i>Whether core and chip samples have been geologically and geotechnically logged to a level of detail to support appropriate Mineral Resource estimation, mining studies and metallurgical studies.</i>	Geological logging is carried out on all drill holes with lithology, alteration, mineralisation, structure and veining recorded.
	<i>Whether logging is qualitative or quantitative in nature. Core (or costean, channel, etc) photography.</i>	Logging of diamond core and RC samples records lithology, mineralogy, mineralisation, structures (core only), weathering, colour and other noticeable features. Core was photographed in both dry and wet form.
	<i>The total length and percentage of the relevant intersections logged.</i>	All drill holes are geologically logged in full and detailed litho-geochemical information is collected by the field XRF unit. The data relating to the elements analysed is used to determine further information regarding the detailed rock composition.
Sub-sampling techniques and sample preparation	<i>If core, whether cut or sawn and whether quarter, half or all core taken.</i>	<i>Diamond Core Sampling:</i> Diamond core was drilled with HQ and NQ2 size and sampled as complete half core to produce a bulk sample for analysis. Intervals selected varied from 0.3 – 1m (maximum) The HQ and NQ2 core is cut in half length ways just to the right of the orientation line where available using a diamond core saw. All samples are collected from the same side of the core where practicable. Assay preparation procedures ensure the entire sample is pulverised to 75 microns before the sub-sample is taken. This removes the potential for the significant sub-sampling bias that can be introduced at this stage.
	<i>If non-core, whether riffled, tube sampled, rotary split, etc and whether sampled wet or dry.</i>	RC samples are collected in dry form. Samples are collected using cone or riffle splitter when available. Geological logging of RC chips is completed at site with representative chips being stored in drill chip trays.
	<i>For all sample types, the nature, quality and appropriateness of the sample preparation technique.</i>	<i>RC Sampling:</i> Sample preparation for RC chips follows a standard protocol. The entire sample is pulverised to 75µm using LM5 pulverising mills. Samples are dried, crushed and pulverized to produce a homogenous representative sub-sample for analysis. A grind quality target of 90% passing 75µm is used.
	<i>Quality control procedures adopted for all sub-sampling stages to maximise representivity of samples.</i>	Quality control procedures include submission of Certified Reference Materials (standards), duplicates and blanks with each sample batch. QAQC results are routinely reviewed to identify and resolve any issues. <i>RC Sampling:</i> Field QC procedures maximise representivity of RC samples and involve the use of certified reference material as assay standards, along with blanks, duplicates and barren washes. <i>Diamond Core Sampling:</i> Drill core is cut in half lengthways and the total half-core submitted as the sample. This meets industry standards where 50% of the total sample taken from the diamond core is submitted.

Criteria	JORC Code explanation	Commentary
	<p><i>Measures taken to ensure that the sampling is representative of the in situ material collected, including for instance results for field duplicate/second-half sampling.</i></p>	<p>Duplicate samples are selected during sampling. Samples comprise two quarter core samples for Diamond Core. Duplicate RC samples are captured using two separate sampling apertures on the splitter.</p>
	<p><i>Whether sample sizes are appropriate to the grain size of the material being sampled.</i></p>	<p>The sample sizes are considered to be appropriate to correctly represent base metal sulphide mineralisation and associated geology based on: the style of mineralisation (massive and disseminated sulphides), the thickness and consistency of the intersections and the sampling methodology.</p>
<p>Quality of assay data and laboratory tests</p>	<p><i>The nature, quality and appropriateness of the assaying and laboratory procedures used and whether the technique is considered partial or total.</i></p>	<p>For RC sampling, a 30 gram sample will be fire assayed for gold, platinum and palladium. The detection range for gold is 1 – 2000 ppbAu, and 0.5 – 2000 ppb for platinum and palladium. This is believed to be an appropriate detection level for the levels of these elements within this specific mineral environment. However, should Au, Pt or Pd levels reported exceed these levels; an alternative assay method will be selected.</p> <p>All other metals will be analysed using an acid digest and an ICP finish. The sample is digested with nitric, hydrochloric, hydrofluoric and perchloric acids to effect as near to total solubility of the sample as possible. The solution containing samples of interest, including those that need further review, will then be presented to an ICP-OES for the further quantification of the selected elements.</p> <p>Diamond core samples are analysed for Au, Pt and Pd using a 40g lead collection fire assay; for Rh, Ru, Os, Ir using a 25g nickel sulphide collection fire assay; and for Ag, Al, As, Bi, Ca, Cd, Co, Cr, Fe, K, Li, Mg, Mn, Mo, Nb, Ni, P, Pb, S, Sb, Sn, Te, Ti, V, W, Zn using a four acid digest and ICP-AES or MS finish. The assay method and detection limits are appropriate for analysis of the elements required.</p>
	<p><i>For geophysical tools, spectrometres, handheld XRF instruments, etc, the parameters used in determining the analysis including instrument make and model, reading times, calibrations factors applied and their derivation, etc.</i></p>	<p>MT/AMT: The surveys were conducted using the Phoenix MTU system and Metronix ADU07e system. The sensors were recorded at 500m intervals with 100m infill over the Investigators Prospect.</p> <p>XRF: A handheld XRF instrument (Olympus Innov-X Spectrum Analyser) is used to systematically analyse the drill core and RC sample piles onsite. One reading is taken per metre, however for any core samples with matrix or massive sulphide mineralisation then multiple samples are taken at set intervals per metre. The instruments are serviced and calibrated at least once a year. Field calibration of the XRF instrument using standards is periodically performed (usually daily).</p> <p>The handheld XRF results are only used for preliminary assessment and reporting of element compositions, prior to the receipt of assay results from the certified laboratory.</p>
	<p><i>Nature of quality control procedures adopted (eg standards, blanks, duplicates, external laboratory checks) and whether acceptable levels of accuracy (ie lack of bias) and precision have been established.</i></p>	<p>Laboratory QAQC involves the use of internal lab standards using certified reference material (CRMs), blanks and pulp duplicates as part of in-house procedures. The Company also submits a suite of CRMs, blanks and selects appropriate samples for duplicates.</p> <p>Sample preparation checks for fineness are performed by the laboratory to ensure the grind size of 90% passing 75µm is being attained.</p>
<p>Verification of sampling and assaying</p>	<p><i>The verification of significant intersections by either independent or alternative company personnel.</i></p>	<p>Significant intersections are verified by the Company's technical staff.</p>
	<p><i>The use of twinned holes.</i></p>	<p>No twinned holes have been planned for the current drill programme.</p>

Criteria	JORC Code explanation	Commentary
	<p><i>Documentation of primary data, data entry procedures, data verification, data storage (physical and electronic) protocols.</i></p> <hr/> <p><i>Discuss any adjustment to assay data.</i></p>	<p>Primary data is captured onto a laptop using acQuire software and includes geological logging, sample data and QA/QC information. This data, together with the assay data, is entered into the St George Mining central SQL database which is managed by external consultants.</p> <hr/> <p>No adjustments or calibrations will be made to any primary assay data collected for the purpose of reporting assay grades and mineralised intervals. For the geological analysis, standards and recognised factors may be used to calculate the oxide form assayed elements, or to calculate volatile free mineral levels in rocks.</p>
Location of data points	<p><i>Accuracy and quality of surveys used to locate drill holes (collar and down-hole surveys), trenches, mine workings and other locations used in Mineral Resource estimation.</i></p> <hr/> <p><i>Specification of the grid system used.</i></p> <hr/> <p><i>Quality and adequacy of topographic control.</i></p>	<p>Drill holes and MT/AMT stations have been located and pegged using a DGPS system with an expected accuracy of +/-5m for easting, northing and elevation.</p> <p>Downhole surveys are conducted using a single shot camera approximately every 30m or downhole Gyro during drilling to record and monitor deviations of the hole from the planned dip and azimuth. Post-drilling downhole gyroscopic surveys will be conducted, which provide more accurate survey results.</p> <hr/> <p>The grid system used is GDA94, MGA Zone 51.</p> <hr/> <p>Elevation data has been acquired using DGPS surveying at individual collar locations and entered into the central database. A topographic surface has been created using this elevation data.</p>
Data spacing and distribution	<p><i>Data spacing for reporting of Exploration Results.</i></p> <hr/> <p><i>Whether the data spacing and distribution is sufficient to establish the degree of geological and grade continuity appropriate for the Mineral Resource and Ore Reserve estimation procedure(s) and classifications applied.</i></p> <hr/> <p><i>Whether sample compositing has been applied.</i></p>	<p>The spacing and distribution of holes is not relevant to the drilling programs which are at the exploration stage rather than definition drilling.</p> <hr/> <p>The completed drilling at the Project is not sufficient to establish the degree of geological and grade continuity to support the definition of Mineral Resource and Reserves and the classifications applied under the 2012 JORC code.</p> <hr/> <p>No compositing has been applied to the exploration results.</p>
Orientation of data in relation to geological structure	<p><i>Whether the orientation of sampling achieves unbiased sampling of possible structures and the extent to which this is known, considering the deposit type.</i></p> <hr/> <p><i>If the relationship between the drilling orientation and the orientation of key mineralised structures is considered to have introduced a sampling bias, this should be assessed and reported if material.</i></p>	<p>The drill holes are drilled to intersect the modelled mineralised zones at a near perpendicular orientation (unless otherwise stated). However, the orientation of key structures may be locally variable and any relationship to mineralisation has yet to be identified.</p> <hr/> <p>No orientation based sampling bias has been identified in the data to date.</p>
Sample security	<p><i>The measures taken to ensure sample security.</i></p>	<p>Chain of Custody is managed by the Company until samples pass to a duly certified assay laboratory for subsampling and assaying. The RC sample bags are stored on secure sites and delivered to the assay laboratory by the Company or a competent agent. When in transit, they are kept in locked premises. Transport logs have been set up to track the progress of samples.</p>
Audits or reviews	<p><i>The results of any audits or reviews of sampling techniques and data.</i></p>	<p>Sampling techniques and procedures are regularly reviewed internally, as is data. To date, no external audits have been completed on the drilling programme.</p>

Section 2 Reporting of Exploration Results (Criteria listed in section 1 will also apply to this section where relevant)

Criteria	JORC Code explanation	Commentary
Mineral Tenement and Land Status	<p>Type, name/reference number, location and ownership including agreements or material issues with third parties including joint ventures, partnerships, overriding royalties, native title interests, historical sites, wilderness or national park and environmental settings.</p> <p>The security of the tenure held at the time of reporting along with any known impediments to obtaining a licence to operate in the area.</p>	<p>The Mt Alexander Project is comprised of five granted Exploration Licences (E29/638, E29/548, E29/954, E29/962 and E29/972). Tenement E29/638 is held in Joint Venture between St George (75% interest) and Western Areas (25% interest). E29/638 and E29/548 are also subject to a royalty in favour of a third party that is outlined in the ASX Release dated 17 December 2015 (as regards E29/638) and the ASX release dated 18 September 2015 (as regards E29/548).</p> <p>No environmentally sensitive sites have been identified on the tenements. A registered Heritage site known as Willsmore 1 (DAA identification 3087) straddles tenements E29/548 and E29/638. All five tenements are in good standing with no known impediments.</p>
Exploration Done by Other Parties	<p>Acknowledgment and appraisal of exploration by other parties.</p>	<p>Exploration on tenements E29/638 and E29/962 has been largely for komatiite-hosted nickel sulphides in the Mt Alexander Greenstone Belt. Exploration in the northern section of E29/638 (Cathedrals Belt) and also limited exploration on E29/548 has been for mafic/ultramafic intrusion related Ni-Cu-PGE sulphides. No historic exploration has been identified on E29/954 or E29/972.</p> <p>High grade nickel-copper-PGE sulphides were discovered at the Mt Alexander Project in 2008. Drilling was completed to test co-incident electromagnetic (EM) and magnetic anomalies associated with nickel-PGE enriched gossans in the northern section of current tenement E29/638. The drilling identified high grade nickel-copper mineralisation in granite-hosted ultramafic units and the discovery was named the Cathedrals Prospect.</p>
Geology	<p>Deposit type, geological setting and style of mineralisation</p>	<p>The Mt Alexander Project is at the northern end of a western bifurcation of the Mt Ida Greenstones. The greenstones are bound to the west by the Ida Fault, a significant Craton-scale structure that marks the boundary between the Kalgoorlie Terrane (and Eastern Goldfields Superterrane) to the east and the Youanmi Terrane to the west.</p> <p>The Mt Alexander Project is prospective for further high-grade komatiite-hosted nickel-copper-PGE mineralisation (both greenstone and granite hosted) and also precious metal mineralisation (i.e. orogenic gold) that is typified elsewhere in the Yilgarn Craton.</p>
Drill hole information	<p>A summary of all information material to the understanding of the exploration results including tabulation of the following information for all Material drill holes:</p> <ul style="list-style-type: none"> • Easting and northing of the drill hole collar • Elevation or RL (Reduced Level – elevation above sea level in metres) of the drill hole collar • Dip and azimuth of the hole • Down hole length and interception depth • Hole length 	<p>Drill hole collar locations are shown in the maps and tables included in the body of the relevant ASX releases.</p>
Data aggregation methods	<p>In reporting Exploration Results, weighting averaging techniques, maximum and/or minimum grade truncations (e.g. cutting of high grades) and cut-off grades are usually Material and should be stated.</p>	<p>Reported assay intersections are length and density weighted. Significant intersections are determined using both qualitative (i.e. geological logging) and quantitative (i.e. lower cut-off) methods.</p> <p>For massive sulphide intersections, the nominal lower cut-off is 2% for either nickel or copper. For disseminated, blebby and matrix sulphide intersections the nominal lower cut-off for nickel is 0.3%.</p>

Criteria	JORC Code explanation	Commentary
	<p><i>Where aggregated intercepts incorporate short lengths of high grade results and longer lengths of low grade results, the procedure used for such aggregation should be stated and some typical examples of such aggregations should be shown in detail.</i></p> <hr/> <p><i>The assumptions used for any reporting of metal equivalent values should be clearly stated.</i></p>	<p>Any high-grade sulphide intervals internal to broader zones of sulphide mineralisation are reported as included intervals.</p> <p>Any disseminated, matrix, brecciated or stringer sulphides with (usually) >1% nickel or copper on contact with massive sulphide mineralisation are grouped with the massive sulphides for calculating significant intersections and the massive sulphide mineralisation is reported as an including intersection.</p> <hr/> <p>No metal equivalent values are used for reporting exploration results.</p>
Relationship between mineralisation widths and intercept lengths	<p><i>These relationships are particularly important in the reporting of exploration results. If the geometry of the mineralisation with respect to the drill hole angle is known, its nature should be reported. If it is not known and only the down hole lengths are reported, there should be a clear statement to this effect.</i></p>	<p>Assay intersections are reported as down hole lengths. Drill holes are planned as perpendicular as possible to intersect the target EM plates and geological targets so downhole lengths are usually interpreted to be near true width.</p>
Diagrams	<p><i>Appropriate maps and sections (with scales) and tabulations of intercepts should be included for any significant discovery being reported. These should include, but not be limited to a plane view of drill hole collar locations and appropriate sectional views.</i></p>	<p>A prospect location map, cross section and long section are shown in the body of relevant ASX Releases.</p>
Balanced Reporting	<p><i>Where comprehensive reporting of all Exploration Results is not practical, representative reporting of both low and high grades and/or widths should be practiced to avoid misleading reporting of Exploration Results.</i></p>	<p>Reports on recent exploration can be found in ASX Releases that are available on our website at www.stgm.com.au:</p> <p>The exploration results reported are representative of the mineralisation style with grades and/or widths reported in a consistent manner.</p>
Other substantive exploration data	<p><i>Other exploration data, if meaningful and material, should be reported including (but not limited to): geological observation; geophysical survey results; geochemical survey results; bulk samples – size and method of treatment; metallurgical test results; bulk density, groundwater, geotechnical and rock characteristics; potential deleterious or contaminating substances.</i></p>	<p>All material or meaningful data collected has been reported.</p>
Further Work	<p><i>The nature and scale of planned further work (e.g. tests for lateral extensions or depth extensions or large – scale step – out drilling).Diagrams clearly highlighting the areas of possible extensions, including the main geological interpretations and future drilling areas, provided this information is not commercially sensitive.</i></p>	<p>A discussion of further exploration work underway is contained in the body of recent ASX Releases.</p> <p>Further exploration will be planned based on ongoing drill results, geophysical surveys and geological assessment of prospectivity.</p>