

6 July 2015

HIGH IMPACT DRILLING CAMPAIGN - UPDATE

HIGHLIGHTS:

- **Hole DDRDD0005 completed with an additional thick ultramafic unit encountered**
- **Copper sulphide and zinc sulphide mineralisation visually identified in drill core**
- **Drilling results support a large VMS target at Desert Dragon Central**
- **Drilling of hole APHDD0001 to test the highly prospective 'Aphrodite 4' EM conductor has commenced**

MORE BASE METAL SULPHIDES FROM DRILLING AT DESERT DRAGON CENTRAL

St George Mining Limited (ASX: **SGQ**) ('St George Mining' or 'the Company') is pleased to report further positive results with the completion of drill hole DDRDD0005 at the Desert Dragon Central prospect, part of the Company's 100% owned East Laverton Property in Western Australia.

Drill hole DDRDD0005 was completed with an end of hole depth of 429m. This hole was initially drilled to 260m, and was deepened to test for an extension of the lower ultramafic unit at Desert Dragon Central.

The additional drilling encountered a further thick ultramafic unit with extensive sulphide accumulations including visible chalcopyrite (copper sulphide) and sphalerite (zinc sulphide). The hole ended in basalt at 429m downhole.

A sulphide-rich sequence from 293m to 300m returned spot values on the XRF analysis of 2% Cu and 2.9% Zn; see Figure 1. These are provisional results based on visual logging and spot XRF analysis. A more definitive analysis of the metal content of the sulphide zones intersected by DDRDD0005 will be provided from laboratory assays.

A massive nickel sulphide stringer vein was intersected by DDRDD0005 in the upper ultramafic unit. The drilling data from DDRDD0005 and DDRDD0003 suggests that the prospective ultramafic channel at Desert Dragon Central thickens to the east of where DDRDD0003 was completed. This suggests that targets to the east of the recently completed holes will be more prospective for massive nickel sulphides.

This adds importance to the drill holes planned to test underneath the thick interval of disseminated nickel sulphides at DRAC35 and to test the Dragon 9 EM conductor, both of which are to the east of the recently completed holes.

VMS POTENTIAL INCREASED

The ultramafic sequences intersected in DDRDD0005 were interspersed with strongly sulphidic and metal rich sediments. The base metal sulphides encountered in DDRDD0005 were zinc (sphalerite) dominant with interim XRF analysis indicating a peak zinc value of 4.35% Zn.

DDRDD0003 was drilled to test EM Conductor 'Dragon 8', which intersects the western margin of a positive gravity feature. The gravity anomaly is interpreted to reflect dense sulphide-rich rocks. The hole also encountered thick ultramafic sequences with metal-rich sulphidic sediments. Most notable in DDRDD0003

was a zone of copper sulphide mineralisation (chalcopyrite) focused between 123m to 130m. Closed spaced XRF spot values averaged approximately 1% Cu for this interval, with a peak spot value of 2.94% Cu. The associated zinc values for this interval are comparatively low.

The typical zonation pattern in a VMS system has more copper dominant mineralogy closer to the centre of the VMS system. The location of the copper dominant DDRDD0003 within the margin of a large, strong gravity anomaly validates this gravity feature as a priority VMS drill target.

Technical analysis of drilling data is continuing with the aim of mapping the alteration, mineral and geochemical domains of this VMS system.



Figure 1 – a photo of drill core from DDRDD0005 at approx. 296m downhole. Chalcopyrite and sphalerite are visible in this sulphide rich interval. XRF analysis returned spot values of 2% Cu and 2.9% Zn.

APHRODITE 4 - DRILLING HAS COMMENCED

The drill rig has now moved to the Aphrodite nickel sulphide prospect and drilling has commenced at one of our best electromagnetic (EM) conductors – Aphrodite 4. This is a very strong EM conductor which is situated on the southern portion of the Stella Range ultramafic belt.

Aphrodite 4 is a very “late-time” EM conductor with a time constant of 176ms and conductance of 2947 Siemens. Newexco has modelled the conductor as EM plate APH_05. Importantly, the EM plate is located in an optimal structural setting for the formation of nickel sulphide mineralisation.

The conductor is situated within a pronounced embayment on the eastern contact of the ultramafic body at Aphrodite. This curved indentation of the ultramafic reflects the intersection of the ultramafic belt with a fundamental ENE-WSW transform fault. This is a site where large volumes and high flow rates of very hot komatiite magma can assimilate the sulphur in the sulphide-rich footwall sediments identified at Aphrodite.

Drill hole APHDD0001 (planned drill hole AP_05) will be drilled to a depth of 300m at a dip of -60 degrees and an azimuth of 250 degrees. Diamond drilling at the Aphrodite 4 conductor commenced yesterday.

John Prineas, Executive Chairman of St George Mining, said:

“Aphrodite 4 has classic features of a massive nickel sulphide deposit. It is a compelling target and we are excited to be testing it this week.

“The early results at Desert Dragon Central are excellent. The VMS potential of the area is now looking very real, and we have a vector to the east in our search for massive nickel sulphides. That happens to be where we have the Dragon 9 conductor, so the anticipation of drilling that target has risen even higher.”

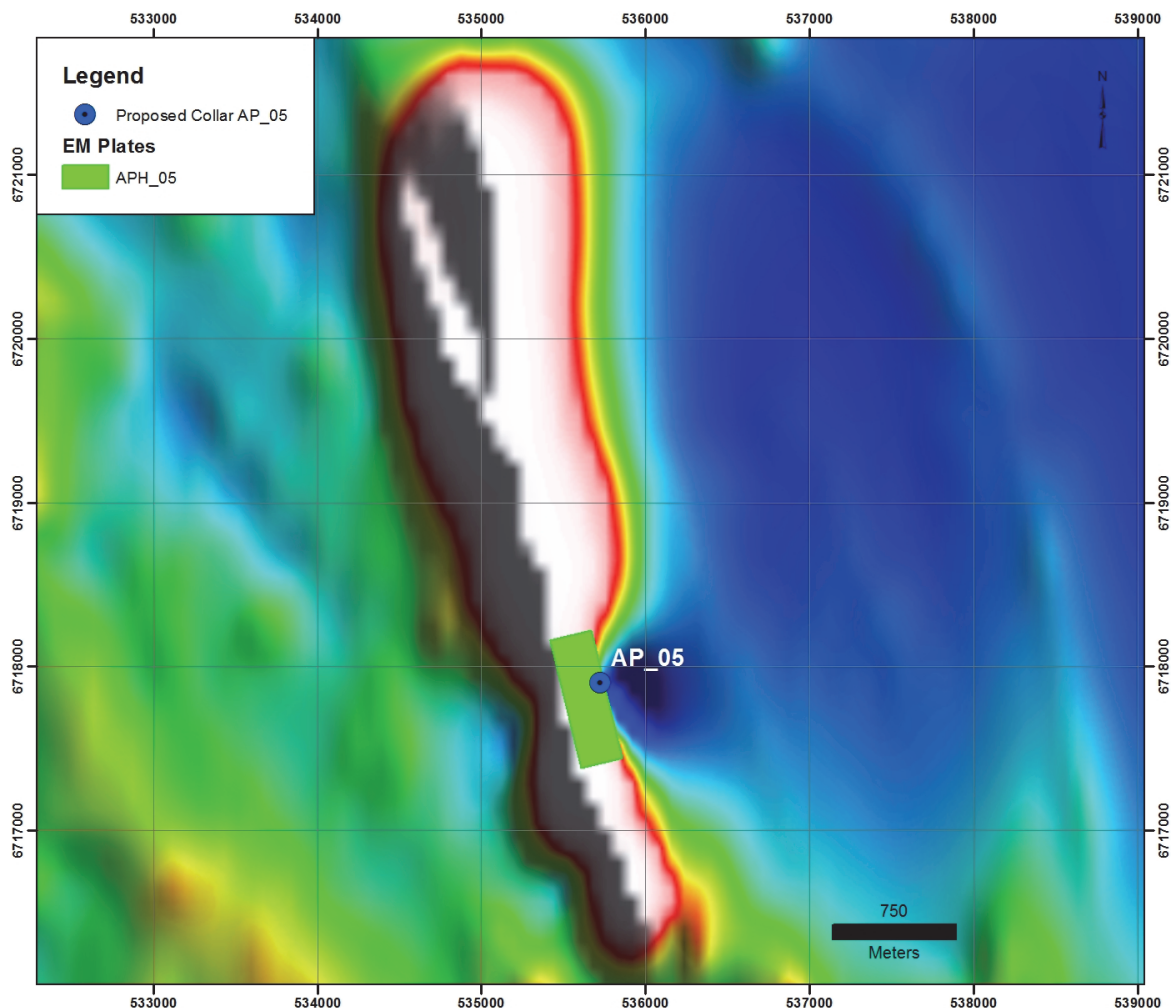


Figure 2 – the Aphrodite prospect and Aphrodite 4 shown against magnetics. The prominent indentation on the eastern side of the large ultramafic body is a highly favourable structural setting for the potential concentration of massive nickel sulphides. The strong EM conductor identified at this site will be tested by hole APHDD0001 (shown as planned drill hole AP_05 in this graphic).



Figure 3 – drill rig at Desert Dragon

For further information, please contact:

John Prineas
Executive Chairman
St George Mining Limited
(+61) 411 421 253
John.prineas@stgm.com.au

Colin Hay
Professional Public Relations
(+61) 08 9388 0944 mob 0404 683 355
colin.hay@ppr.com.au

Competent Person Statement:

The information in this report that relates to Exploration Targets, Exploration Results, Mineral Resources or Ore Reserves is based on information compiled by Mr Timothy Hronsky, a Competent Person who is a Member of The Australasian Institute of Mining and Metallurgy. Mr Hronsky is employed by Essential Risk Solutions Ltd which has been retained by St George Mining Limited to provide technical advice on mineral projects.

Mr Hronsky has sufficient experience that is relevant to the style of mineralisation and type of deposit under consideration and to the activity being undertaken to qualify as a Competent Person as defined in the 2012 Edition of the 'Australasian Code for Reporting of Exploration Results, Mineral Resources and Ore Reserves'. Mr Hronsky consents to the inclusion in the report of the matters based on his information in the form and context in which it appears.

The Company confirms that it is not aware of any new information or data that materially affects the information included in any original market announcements referred to in this report, and that all material assumptions and technical parameters underpinning the announcements continue to apply and have not materially changed. The Company confirms that the form and context in which the Competent Person's findings are presented have not been materially modified from the original market announcements.

The following section is provided for compliance with requirements for the reporting of exploration results under the JORC Code, 2012 Edition.

Section 1 Sampling Techniques and Data

(Criteria in this section apply to all succeeding sections)

Criteria	JORC Code explanation	Commentary
Sampling techniques	<i>Nature and quality of sampling (eg cut channels, random chips, or specific specialised industry standard measurement tools appropriate to the minerals under investigation, such as down hole gamma sondes, or handheld XRF instruments, etc). These examples should not be taken as limiting the broad meaning of sampling.</i>	<p>This ASX Release dated 6 July 2015 reports on interim exploration results from the Company’s 2015 nickel sulphide drilling campaign.</p> <p>Drilling is being undertaken by DDH1 Drilling Pty Ltd using a Sandvik 1200 Multipurpose truck mounted drill rig. This rig has capability for diamond core, reverse circulation (RC) and mud rotary drilling.</p> <p>The initial drilling program is planned to include diamond core holes with RC pre-collars. The actual holes to be completed will be subject to ongoing management of the drilling program based on ground conditions and exploration results.</p> <p><i>Diamond Core Sampling:</i> The core is removed from the drill rig and laid out for initial analysis in the field. The core is measured and marked up at 1m intervals against the drillers blocks, which are themselves checked against the drillers log books where required. The visible structural features on the core are measured against the core-orientation lines.</p> <p>Onsite XRF analysis is conducted using a hand-held Olympus Innov-X Spectrum Analyser. The XRF analysis is used to systematically review diamond drill core, with a single reading taken every metre, except in the case of core loss. These results are only used for onsite interpretation and preliminary base metal assessment subject to final geochemical analysis by laboratory assays.</p> <p>The sections of the core that are selected for assaying are marked up and recorded on a “cut-sheet” which provides a control on the intervals that will be cut and sampled at a duly certified assay laboratory, Intertek Genalysis. Core is prepared for analysis at 1m intervals or at lesser intervals of geological significance. Core is cut in half lengthways and then numbered samples are taken as per the “cut-sheet”.</p> <p>Diamond core provides high quality samples that are logged for lithological, structural, geotechnical, density and other attributes. Sampling is carried out under QAQC procedures as per industry best practice.</p> <p><i>RC Sampling:</i> All samples from the RC drilling are taken as 1m samples. Samples are sent to Intertek Genalysis for assaying.</p> <p>Appropriate QAQC samples (standards, blanks and duplicates) were inserted into the sequences as per industry best practice.</p> <p>In this program the multi-purpose diamond and RC drill rig did not have an industry standard splitter attached to facilitate collection of samples. RC samples were taken manually in the most representative way. Should any sample return any values that are anomalous, then a portable riffle splitter will be utilised to select another representative sample for assaying from the bulk sample of RC chips retained by the Company.</p> <p>Onsite XRF analysis is conducted on the fines from RC chips using a hand-held Olympus Innov-X Spectrum Analyser. These results are only used for onsite interpretation and preliminary base metal assessment subject to final geochemical analysis by laboratory assays.</p> <p><i>Down-hole electromagnetic (DHEM) survey:</i> A DHEM survey is planned for each diamond hole. The DHEM survey is designed and managed by Newexco Services Pty Ltd, with field work contracted to</p>

Criteria	JORC Code explanation	Commentary
		<p>Bushgum Holdings Pty Ltd.</p> <p>Key specifications of the DHEM survey are:</p> <p><i>System:</i> Atlantis (analogue)</p> <p><i>Components:</i> A, U, V</p> <p><i>Component direction:</i></p> <ul style="list-style-type: none"> • Ba – Parallel to hole axis, positive up hole. • Bu – Perpendicular to hole axis: toward 12 o’ clock when looking down hole. • Bv – Perpendicular to hole axis: toward 9 o’ clock when looking down hole.
	<p><i>Include reference to measures taken to ensure sample representivity and the appropriate calibration of any measurement tools or systems used.</i></p>	<p><i>Diamond Core Sampling:</i> For diamond core samples, certified sample standards were added as every 25th sample. Core recovery calculations are made through a reconciliation of the actual core and the driller’s records. Downhole surveys of dip and azimuth were conducted using a single shot camera every 30m to detect deviations of the hole from the planned dip and azimuth. The drill-hole collar locations were recorded using a hand held GPS, which has an accuracy of +/- 5m. At a later date the drill-hole collar will be surveyed to a greater degree of accuracy.</p> <p><i>RC Sampling:</i> For RC drill samples, geological logging of RC chips is completed at site with representative chips being stored in drill chip trays. Downhole surveys of dip and azimuth follow the same protocol as for diamond core holes.</p> <p><i>DHEM Survey:</i> For the DHEM survey, the polarity of each component is checked to ensure the system was set up using the correct component orientations. The hole position is corrected for trajectory using orientation survey data.</p>
	<p><i>Aspects of the determination of mineralisation that are Material to the Public Report.</i></p> <p><i>In cases where ‘industry standard’ work has been done this would be relatively simple (eg ‘reverse circulation drilling was used to obtain 1 m samples from which 3 kg was pulverised to produce a 30 g charge for fire assay’). In other cases more explanation may be required, such as where there is coarse gold that has inherent sampling problems. Unusual commodities or mineralisation types (eg submarine nodules) may warrant disclosure of detailed information.</i></p>	<p><i>Diamond Core Sampling:</i> Core is drilled with HQ and NQ2 size and sampled as half core to produce a bulk sample for analysis. Intervals vary from 0.3 – 1m maximum and are selected with an emphasis on geological control.</p> <p>Assays are completed at Intertek Genalysis Laboratories in Perth. Samples are sent to Intertek where they are crushed to 6 mm and then pulverised to 75 microns. A 30 g charge of the sample is fire assayed for gold, platinum and palladium. The detection range for gold is 1 – 2000 ppbAu, and 0.5 – 2000 ppb for platinum and palladium. This is believed to be an appropriate detection level for these elements within this specific mineral environment. However, should Au, Pt or Pd levels reported exceed these levels an additional assay method will be used to re-test samples.</p> <p>All other metals will be analysed using an acid digest and an ICP finish. The sample is digested with nitric, hydrochloric, hydrofluoric and perchloric acids to effect as near to total solubility of the sample as possible. The solution containing samples of interest, including those that need further review, will then be presented to an ICP-OES for the further quantification of the selected elements.</p> <p><i>RC Sampling:</i> A 1m composite sample is taken from the bulk sample of RC chips that may weigh in excess of 40 kg. Assay preparation by Intertek follows the same protocol as for diamond core sampling.</p>
<p>Drilling techniques</p>	<p><i>Drill type (eg core, reverse circulation, open-hole hammer, rotary air blast, auger, Bangka,</i></p>	<p><i>Diamond Core Sampling:</i> The collars of the diamond holes were drilled using RC drilling down through the regolith to the point of</p>

Criteria	JORC Code explanation	Commentary
	<i>sonic, etc) and details (eg core diameter, triple or standard tube, depth of diamond tails, face-sampling bit or other type, whether core is oriented and if so, by what method, etc).</i>	<p>refusal or to a level considered geologically significant to change to core. The hole was then continued using HQ diamond core until the drillers determined that a change to NQ2 coring was required.</p> <p>The core is oriented and marked by the drillers. The core is oriented using ACT Mk II electric core orientation.</p> <p><i>RC Sampling:</i> The RC drilling uses a 140 mm diameter face hammer tool. High capacity air compressors on the drill rig are used to ensure a continuously sealed and high pressure system during drilling to maximise the recovery of the drill cuttings, and to ensure chips remain dry to the maximum extent possible.</p>
Drill sample recovery	<i>Method of recording and assessing core and chip sample recoveries and results assessed.</i>	<p><i>Diamond Core Sampling:</i> Diamond core recoveries/core loss are recorded during drilling and reconciled during the core processing and geological logging. No significant sample recovery problems are thought to have occurred in any holes drilled to date. There has been a notable and consistent competency encountered in the rocks during drilling.</p> <p><i>RC Sampling:</i> RC samples are visually checked for recovery, moisture and contamination. Geological logging is completed at site with representative RC chips stored in chip trays.</p>
	<i>Measures taken to maximise sample recovery and ensure representative nature of the samples.</i>	<p><i>Diamond Core Sampling:</i> Depths are checked against the depth on the core blocks and rod counts are routinely carried out by the drillers. Core loss was recorded by St George geologists and sampling intervals were not carried through core loss.</p> <p><i>RC Sampling:</i> Samples are normally collected using a cone and riffle splitter. However, in this program, the multi-purpose diamond and RC drill rig did not have an industry standard splitter attached. RC samples were taken manually in the most representative way. If any sample returns any values that are anomalous, then a portable riffle splitter will be utilised to select another representative sample for assaying from the bulk sample of RC chips retained by the Company.</p>
	<i>Whether a relationship exists between sample recovery and grade and whether sample bias may have occurred due to preferential loss/gain of fine/coarse material.</i>	<p>To date, no detailed analysis to determine the relationship between sample recovery and grade has been undertaken for this drill program. This analysis will be conducted following any economic discovery.</p> <p>The use of diamond drilling capturing whole rock cores reduces errors associated with varying size fraction loss of the sample. Very competent rocks have been recovered to date.</p> <p>The nature of magmatic sulphide distribution hosted by the competent and consistent rocks hosting any mineralised intervals are considered to significantly reduce any possible issue of sample bias due to material loss or gain.</p>
Logging	<i>Whether core and chip samples have been geologically and geotechnically logged to a level of detail to support appropriate Mineral Resource estimation, mining studies and metallurgical studies.</i>	<p>Geological logging is carried out on all diamond core and RC drill holes with lithology, alteration, mineralisation, structure and veining recorded.</p>
	<i>Whether logging is qualitative or quantitative in nature. Core (or costean, channel, etc) photography.</i>	<p>Logging of diamond core and RC samples recorded lithology, mineralogy, mineralisation, structures (core only), weathering, colour and other noticeable features. Core was photographed in both dry and wet form.</p>
	<i>The total length and percentage of the relevant intersections logged.</i>	<p>All drill holes were geologically logged in full and detailed litho-geochemical information was collected by the field XRF unit. The data relating to the elements analysed is used to determine further information regarding the detailed rock composition.</p>

Criteria	JORC Code explanation	Commentary
Sub-sampling techniques and sample preparation	<i>If core, whether cut or sawn and whether quarter, half or all core taken.</i>	The HQ and NQ2 core will be cut in half length ways at site using an automatic core saw. All samples will be collected from the same side of the core. The half-core samples will be submitted to Intertek for analysis.
	<i>If non-core, whether riffled, tube sampled, rotary split, etc and whether sampled wet or dry.</i>	RC samples were taken manually in the most representative way as the multipurpose drill rig did not have a riffle splitter to facilitate collection of samples. If any sample returns any values that are deemed anomalous, then a portable riffle splitter will be utilised to select another representative sample for assaying from the bulk sample of RC chips retained by the Company. RC samples are collected in dry form.
	<i>For all sample types, the nature, quality and appropriateness of the sample preparation technique.</i>	<i>Diamond Core Sampling:</i> Diamond core was drilled with HQ and NQ2 size and sampled as complete half core to produce a bulk sample for analysis. Intervals selected varied from 0.3 – 1m (maximum) with a strong geological control (as is possible in diamond core) to ensure grades are representative, i.e. remove any bias through projecting assay grades beyond appropriate geological boundaries. Assay preparation procedures ensure the entire sample is pulverised to 75 microns before the sub-sample is taken. This removes the potential for the significant sub-sampling bias that can be introduced at this stage. <i>RC Sampling:</i> Sample preparation for RC chips is the same as for diamond core.
	<i>Quality control procedures adopted for all sub-sampling stages to maximise representivity of samples.</i>	<i>Diamond Core Sampling:</i> Drill core is cut in half lengthways and the total half-core submitted as the sample. This meets industry standards where 50% of the total sample taken from the diamond core is submitted. <i>RC Sampling:</i> Field QC procedures maximise representivity of RC samples and involve the use of certified reference material as assay standards, along with blanks, duplicates and barren washes.
	<i>Measures taken to ensure that the sampling is representative of the in situ material collected, including for instance results for field duplicate/second-half sampling.</i>	<i>Diamond Core Sampling:</i> The retention of the remaining half-core is an important control as it allows assay values to be determined against the actual geology; and where required a quarter core sample may be submitted for assurance. No resampling of quarter core or duplicates has been done at this stage of the project. <i>RC Sampling:</i> Field duplicates were taken on 1m composites for RC samples.
<i>Whether sample sizes are appropriate to the grain size of the material being sampled.</i>	The sample sizes are considered to be appropriate to correctly represent the sulphide mineralisation at the East Laverton Property based on: the style of mineralisation (massive and disseminated sulphides), the thickness and consistency of the intersections and the sampling methodology.	
Quality of assay data and laboratory tests	<i>The nature, quality and appropriateness of the assaying and laboratory procedures used and whether the technique is considered partial or total.</i>	For both diamond core and RC sampling, a 30 gram sample will be fire assayed for gold, platinum and palladium. The detection range for gold is 1 – 2000 ppbAu, and 0.5 – 2000 ppb for platinum and palladium. This is believed to be an appropriate detection level for the levels of these elements within this specific mineral environment. However, should Au, Pt or Pd levels reported exceed these levels; an alternative assay method will be selected. All other metals will be analysed using an acid digest and an ICP finish. The sample is digested with nitric, hydrochloric, hydrofluoric and perchloric acids to effect as near to total solubility of the sample as possible. The solution containing samples of interest, including those that need further review, will then be presented to an ICP-OES for the further quantification of the selected elements.

Criteria	JORC Code explanation	Commentary
	<p><i>For geophysical tools, spectrometers, handheld XRF instruments, etc, the parameters used in determining the analysis including instrument make and model, reading times, calibrations factors applied and their derivation, etc.</i></p>	<p>A handheld XRF instrument (Olympus Innov-X Spectrum Analyser) is used to systematically analyse the drill core and RC chips onsite. Reading time was 60 seconds. The instruments are serviced and calibrated at least once a year. Field calibration of the XRF instrument using standards is undertaken each day.</p> <p>For the DHEM survey, specifications and quality control measures are noted above.</p>
	<p><i>Nature of quality control procedures adopted (eg standards, blanks, duplicates, external laboratory checks) and whether acceptable levels of accuracy (ie lack of bias) and precision have been established.</i></p>	<p>Laboratory QAQC involves the use of internal lab standards using certified reference material, blanks, splits and replicates as part of in house procedures. The Company will also submit an independent suite of CRMs, blanks and field duplicates (see above).</p>
Verification of sampling and assaying	<p><i>The verification of significant intersections by either independent or alternative company personnel.</i></p>	<p>Significant intersections in diamond core are verified by the Company's Technical Director and Consulting Field Geologist.</p>
	<p><i>The use of twinned holes.</i></p>	<p>No twinned holes have been completed in this drilling programme.</p>
	<p><i>Documentation of primary data, data entry procedures, data verification, data storage (physical and electronic) protocols.</i></p>	<p>Geological data was collected using handwritten log sheets and imported in the field onto a laptop detailing geology (weathering, structure, alteration, mineralisation), sampling quality and intervals, sample numbers, QA/QC and survey data. This data, together with the assay data received from the laboratory and subsequent survey data was entered into the Company's database.</p>
	<p><i>Discuss any adjustment to assay data.</i></p>	<p>No adjustments or calibrations will be made to any primary assay data collected for the purpose of reporting assay grades and mineralised intervals. For the geological analysis, standards and recognised factors may be used to calculate the oxide form assayed elements, or to calculate volatile free mineral levels in rocks.</p>
Location of data points	<p><i>Accuracy and quality of surveys used to locate drill holes (collar and down-hole surveys), trenches, mine workings and other locations used in Mineral Resource estimation.</i></p>	<p>Drill hole collar locations are determined using a handheld GPS with an accuracy of +/- 5m. Drill hole collars will be preserved and surveyed to a greater of accuracy after the drilling programme.</p> <p>Down hole surveys of dip and azimuth were conducted using a single shot camera every 30m to detect deviations of the hole from the planned dip and azimuths.</p>
	<p><i>Specification of the grid system used.</i></p>	<p>The grid system used is GDA94, MGA Zone 51.</p>
	<p><i>Quality and adequacy of topographic control.</i></p>	<p>Best estimated RLs were assigned during drilling and are to be corrected at a later stage.</p>
Data spacing and distribution	<p><i>Data spacing for reporting of Exploration Results.</i></p>	<p>The drill programme is targeting EM conductors and other high quality targets for massive nickel sulphide mineralisation. The spacing and distribution of holes is not relevant to this programme.</p>
	<p><i>Whether the data spacing and distribution is sufficient to establish the degree of geological and grade continuity appropriate for the Mineral Resource and Ore Reserve estimation procedure(s) and classifications applied.</i></p>	<p>Drilling is at the exploration stage. Mineralisation at the East Laverton Property has not yet demonstrated to be sufficient in both geological and grade continuity appropriate for the Mineral Resource and Ore Reserve estimation procedure(s) and classifications to be applied.</p>
	<p><i>Whether sample compositing has been applied.</i></p>	<p>Samples are taken at one metre lengths (diamond core), and adjusted where necessary to reflect local variations in geology or where visible mineralised zones are encountered, in order to preserve the samples are representative.</p>
Orientation of data in relation to geological structure	<p><i>Whether the orientation of sampling achieves unbiased sampling of possible structures and the extent to which this is known, considering the deposit type.</i></p>	<p>The diamond core holes are drilled towards 060 at an angle of -60 degrees to intersect the modelled mineralised zones at a near perpendicular orientation unless otherwise stated. However, the orientation of key structures may be locally variable and any relationship to mineralisation at has yet to be identified.</p>

Criteria	JORC Code explanation	Commentary
	<i>If the relationship between the drilling orientation and the orientation of key mineralised structures is considered to have introduced a sampling bias, this should be assessed and reported if material.</i>	No orientation based sampling bias has been identified in the data to date.
Sample security	<i>The measures taken to ensure sample security.</i>	Chain of Custody is managed by the Company until samples pass to a duly certified assay laboratory for subsampling and assaying. The cut-core trays and RC sample bags are stored on secure sites and delivered to the assay laboratory by the Company or a competent agent. When in transit, they are kept in locked premises. Transport logs have been set up to track the progress of samples. The chain of custody passes upon delivery of the samples to the assay laboratory. For diamond core, a predetermined "cut sheet" serves as a tracking tool and provides a further control for any subsequent checks.
Audits or reviews	<i>The results of any audits or reviews of sampling techniques and data.</i>	Sampling techniques and procedures are regularly reviewed internally, as is data. To date, no external audits have been completed on the drilling programme.

Section 2 Reporting of Exploration Results

(Criteria listed in section 1 will also apply to this section where relevant)

Criteria	JORC Code explanation	Commentary
Mineral Tenement and Land Status	<i>Type, name/reference number, location and ownership including agreements or material issues with third parties including joint ventures, partnerships, overriding royalties, native title interests, historical sites, wilderness or national park and environmental settings.</i> <i>The security of the tenure held at the time of reporting along with any known impediments to obtaining a licence to operate in the area.</i>	Phase 1 of the 2015 nickel sulphide drilling programme will test prospects located on several of the 27 Exploration Licences that comprise the East Laverton Property. Each tenement is 100% owned by Desert Fox Resources Pty Ltd, a wholly owned subsidiary of St George Mining. Certain tenements are subject to a 2% Net Smelter Royalty in favour of a third party. None of the tenements are the subject of a native title claim. No environmentally sensitive sites have been identified at any of the tenements. The tenements are in good standing and no known impediments exist.
Exploration Done by Other Parties	<i>Acknowledgment and appraisal of exploration by other parties.</i>	In 2012, BHP Billiton Nickel West Pty Ltd (Nickel West) completed a reconnaissance RC (reverse circulation) drilling program at the East Laverton Property as part of the Project Dragon farm-in arrangement between Nickel West and the Company. That farm-in arrangement has been terminated. The drilling program comprised 35 RC holes for 8,560m drilled. The results from the Nickel West drilling program were reported by the Company in its ASX Release dated 25 October 2012 "Drill Results at Project Dragon". Drilling intersected primary nickel sulphide mineralisation and established the presence of fertile, high MgO ultramafic sequences at the East Laverton Property. Prior to the Project Dragon drilling program, there was no systematic exploration for nickel sulphides at the East Laverton Property. Historical exploration in the region was dominated by shallow RAB and aircore drilling, much of which had been incompletely sampled, assayed, and logged. This early work was focused on gold rather than nickel sulphide exploration.
Geology	<i>Deposit type, geological setting and style of mineralisation</i>	The Company's East Laverton Property located in the NE corner of the Eastern Goldfields Province of the Archean Yilgarn Craton of Western Australia.

Criteria	JORC Code explanation	Commentary
		<p>The project area is proximally located to the Burtville-Yarmana terrane boundary and the paleo-cratonic marginal setting is consistent with the extensive komatiites and carbonatite magmatism found on the property.</p> <p>The area is largely covered by Permian glaciogene sediments (Patterson Formation), which area is subsequently overlain by a thinner veneer of more recent sediments and aeolian sands. As a result the geological knowledge of the belt has previously been largely inferred from gravity and magnetic data and locally verified by drill-hole information and multi-element soil geochemical surveys.</p> <p>The drilling at the East Laverton Property has confirmed extensive strike lengths of high-MgO olivine-rich rocks across three major ultramafic belts. Ultramafic rocks of this composition are known to host high grade nickel sulphides.</p>
Drill hole information	<p>A summary of all information material to the understanding of the exploration results including tabulation of the following information for all Material drill holes:</p> <ul style="list-style-type: none"> • Easting and northing of the drill hole collar • Elevation or RL (Reduced Level – elevation above sea level in meters) of the drill hole collar • Dip and azimuth of the hole • Down hole length and interception depth • Hole length 	<p>Information regarding exploration results from Project Dragon can be found in the Company's ASX Release dated 25 October 2012 "Drill Results at Project Dragon" which is available to view on www.stgm.com.au.</p>
Data aggregation methods	<p>In reporting Exploration Results, weighting averaging techniques, maximum and/or minimum grade truncations (e.g. cutting of high grades) and cut-off grades are usually Material and should be stated.</p>	<p>No top-cuts have been applied. A nominal 0.15% Ni lower cut-off is applied unless otherwise indicated.</p>
	<p>Where aggregated intercepts incorporate short lengths of high grade results and longer lengths of low grade results, the procedure used for such aggregation should be stated and some typical examples of such aggregations should be shown in detail.</p>	<p>High grade massive sulphide intervals internal to broader zones of sulphide mineralisation are reported as included intervals.</p>
	<p>The assumptions used for any reporting of metal equivalent values should be clearly stated.</p>	<p>No metal equivalent values are used for reporting exploration results.</p>
Relationship between mineralisation widths and intercept lengths	<p>These relationships are particularly important in the reporting of exploration results.</p> <p>If the geometry of the mineralisation with respect to the drill hole angle is known, its nature should be reported. If it is not known and only the down hole lengths are reported, there should be a clear statement to this effect (e.g. 'down hole length, true width not known').</p>	<p>The geometry of the mineralisation is not yet known due to insufficient deep drilling in the targeted area.</p>
Diagrams	<p>Appropriate maps and sections (with scales) and tabulations of intercepts should be included for any significant discovery being reported. These should include, but not be limited to a plane view of drill hole collar locations and appropriate sectional views.</p>	<p>Maps will be included with any announcement of any significant discovery, following review of assay results from the drilling programme.</p>

Criteria	JORC Code explanation	Commentary
Balanced Reporting	<i>Where comprehensive reporting of all Exploration Results is not practical, representative reporting of both low and high grades and/or widths should be practiced to avoid misleading reporting of Exploration Results.</i>	A balanced report on the interim exploration results is contained in the body of the ASX Release. A comprehensive report on recent drilling at the East Laverton Property can be found in the following ASX Releases that are available on our website at www.stgm.com.au : 3 September 2014 'Nickel Sulphide Drilling – Update on Phase 1' 11 February 2015 'St George Extends Nickel Sulphide Zone'.
Other substantive exploration data	<i>Other exploration data, if meaningful and material, should be reported including (but not limited to): geological observation; geophysical survey results; geochemical survey results; bulk samples – size and method of treatment; metallurgical test results; bulk density, groundwater, geotechnical and rock characteristics; potential deleterious or contaminating substances.</i>	All meaningful and material information has been included in the body of the text. No metallurgical or mineralogical assessments have been completed.
Further Work	<i>The nature and scale of planned further work (e.g. tests for lateral extensions or depth extensions or large – scale step – out drilling). Diagrams clearly highlighting the areas of possible extensions, including the main geological interpretations and future drilling areas, provided this information is not commercially sensitive.</i>	A discussion of further exploration work is contained in the body of the ASX Release.

HOLE ID	NORTHIN G (m)	EASTIN G (m)	DIP (deg)	AZM (deg)	DEPT H (m)	FROM (m)	TO (m)	WIDTH (m)	Ni (%)	Cu (ppm)	Pt+Pd (ppb)
DRAC35	6739401	527150	-60	250	244	100	118	18	0.40	342	197
						100	104	4	0.57	366	294
						112	114	2	0.51	584	281
DRAC38	6733696	530786	-60	250	298	108	138	30	0.31	10	31
						132	138	6	0.48	40	48
						132	134	2	0.62	92	53
DDNRC002	6742718	523717	-60	59	246	53	60	7	0.54		
						53	55	2	1.08		

Table 1 to 2012 JORC Section – Significant intersections in DRAC35, DRAC38 and DDNRC002.

These historical holes are the first identification of nickel sulphides at the East Laverton Property. For further details on DRAC35 and DRAC38, see the ASX Release dated 25 October 2012 "Drill Results at Project Dragon". For further details on DDNRC002, see the ASX Release dated 11 April 2013 "St George Provides Exploration Update". These ASX Releases are available to view on the Company's website at www.stgm.com.au