

7 September 2022

SIGNIFICANT LITHIUM POTENTIAL IDENTIFIED AT MT ALEXANDER PROJECT**HIGHLIGHTS**

- Initial field mapping and rock chip sampling at Mt Alexander confirms numerous outcropping pegmatite dykes occurring in swarms which extend over 15km within St George's tenements
- The pegmatite dykes strike approximately east-west within a regional corridor interpreted to host the major lithium discovery announced by Red Dirt Metals (ASX: RDT) at its Mt Ida Project to the south-east (see ASX Release by Red Dirt dated 28 September 2021 *Mt Ida – A New Lithium Province*)
- Assays from initial pegmatite rock chip sampling (45 samples) at Mt Alexander have returned anomalous values for lithium, caesium, tantalum and rubidium supporting the potential for lithium mineralisation to occur at depth
- Values for rubidium – a key indicator element for potential lithium mineralisation in weathered environments – are as high as 0.6% rubidium (Rb) with anomalous Rb seen in initial sampling across the 15km project area
- Mt Ida is emerging as a new lithium province with significant developments in close proximity to St George's ground including:
 - Ongoing discoveries by Red Dirt – see ASX Release by Red Dirt dated 27 July 2022 *Sparrow North Pegmatite Discovery*
 - Exploration drilling by Zenith Minerals (ASX: ZNC) – see ASX Release by Zenith dated 23 May 2022 *New Lithium Exploration Project Secured*
 - Hancock entering into a lithium joint venture – see ASX Release by Hawthorn Resources (ASX: HAW) dated 29 August 2022 *Hancock executes agreement for nickel, lithium and copper at Mt Bevan Project*
- Systematic rock chip sampling and field mapping of pegmatites is underway at Mt Alexander to finalise targets for drilling in Q4 2022

St George Mining Limited (ASX: SGQ) ("St George" or "the Company") is pleased to announce the significant exploration potential for lithium pegmatite mineralisation extending south from its high-grade Mt Alexander Ni-Cu-PGE Project located in the north-eastern Goldfields of Western Australia.

John Prineas, St George Mining's Executive Chairman, said:

"The results from our initial field work to scope the lithium potential at Mt Alexander are very encouraging and support a compelling case to accelerate exploration for lithium pegmatite mineralisation. We will advance the lithium exploration in tandem with drill testing several very promising, recently identified nickel targets announced on 1 September 2022.

"We are particularly excited by the strong rubidium values in sample assays received to date – this is an excellent indicator of pegmatites favourable for lithium mineralisation.

“The initial results highlight the lithium potential from the extensive pegmatite outcrop at our Project. Mt Alexander has never been explored for lithium, providing St George with an outstanding opportunity to make a greenfields discovery in what has become a lithium exploration hotspot.

“The pegmatites at Mt Alexander may be part of the same system that hosts the major lithium discovery announced by Red Dirt Metals at its Mt Ida Project to the south-east of our ground, which further underpins the lithium prospectivity at our Project.

“The lithium opportunity at Mt Alexander is a perfect complement to our nickel sulphide discoveries at the project, and expands our focus on EV and clean energy metals.”



Figure 1 – photos of pegmatite outcrop at Mt Alexander. Rock chip sampling has confirmed a geochemistry favourable for the presence of lithium pegmatite mineralisation.

Reconnaissance field work at Mt Alexander confirms fertile pegmatites:

Assays for the initial rock chip sampling of pegmatite outcrop at Mt Alexander have confirmed a geochemistry indicative of lithium, caesium, tantalum (LCT) fertile pegmatites.

45 rock chip samples were collected during preliminary mapping in selective areas across the 15km strike of the prospective pegmatite outcrops.

Anomalous values for lithium, caesium and tantalum were noted in numerous samples with up to 157ppm Li, 44ppm Cs and 125ppm Ta. See Table 1 below for a summary of all assays for the rock chip samples collected in Phase 1 of the lithium sampling programme at Mt Alexander.

The pegmatite outcrops at Mt Alexander are generally highly weathered. In this kind of terrain, key indicator elements such as rubidium are considered reliable pathfinders as lithium may have weathered out at surface.

Assays for rock chip samples at Mt Alexander returned highly anomalous values for rubidium of up to 0.6% Rb in a strongly weathered pegmatite.

Anomalous rubidium signifies the presence of a differentiated pegmatite, which is a key feature for indicating the potential of the pegmatite to be lithium bearing.

Field mapping at Mt Alexander has identified numerous east-west striking pegmatite dykes outcropping across an area extending over 15km north-south, along the greenstone belt west of the Copperfield Granite (Figure 2).

This geological setting, including the east-west strike of the pegmatite dykes, is very similar to the lithium discovery by Red Dirt at its Mt Ida Project, along strike south-east from St George's tenements.

Further sampling and field mapping underway:

St George has commenced a detailed field exploration campaign at Mt Alexander to define targets for drill testing. The field work includes mapping and systematic sampling of the numerous outcropping pegmatite dykes along the belt.

The width at surface of the pegmatites mapped to date is up to 15m though the true thickness is not yet known because of the uncertainty of the dip angle. This will be further clarified by the current field mapping.

Importantly, the prospective pegmatite outcrops have the width and strike that could provide scale to any potential discovery.

Targets for drill testing will be finalised once results of the field campaign are assessed. The maiden drill programme for the lithium targets is scheduled to commence in Q4 2022.

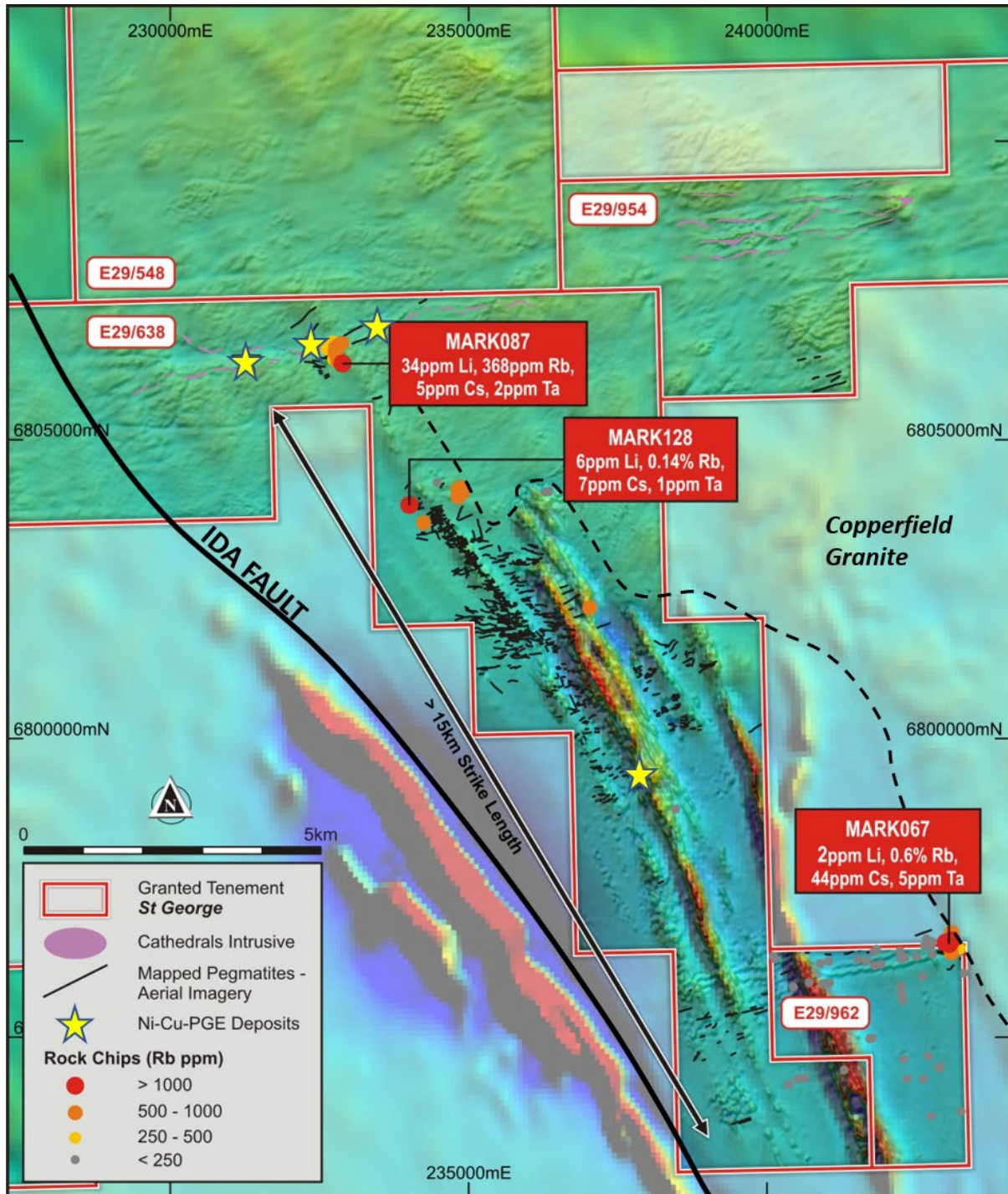


Figure 2 – map of St George’s tenements showing the location of pegmatite outcrop and selected rock chip assays (against magnetic RTP 1VD). Yellow stars denote the Mt Alexander high grade Ni-Cu-PGE deposits discovered to date.

New lithium province:

Since the significant lithium discovery by Red Dirt at its Mt Ida Project in September 2021, the province around Mt Ida has attracted increased investor interest for its lithium potential.

The prospectivity of the province is interpreted to be associated with the large Copperfield Granite which may be a source of the LCT pegmatites at Mt Ida. A prospective LCT corridor is interpreted between the contact with the Copperfield Granite in the east and the Ida Fault in the west. More than 15km of this north-south trending corridor is located on St George’s tenure.

In addition to St George, Zenith Minerals and Hawthorn Resources – in joint venture with Legacy Iron (ASX: LCY) and Hancock Prospecting – have ground on the western margin of the Copperfield Granite; see Figure 3. Active exploration for lithium is underway at these projects, supporting the credentials of the area as a new lithium province.

The province is located approximately 95km west of Leonora in an established mining region of the north-eastern Goldfields which hosts substantial infrastructure.

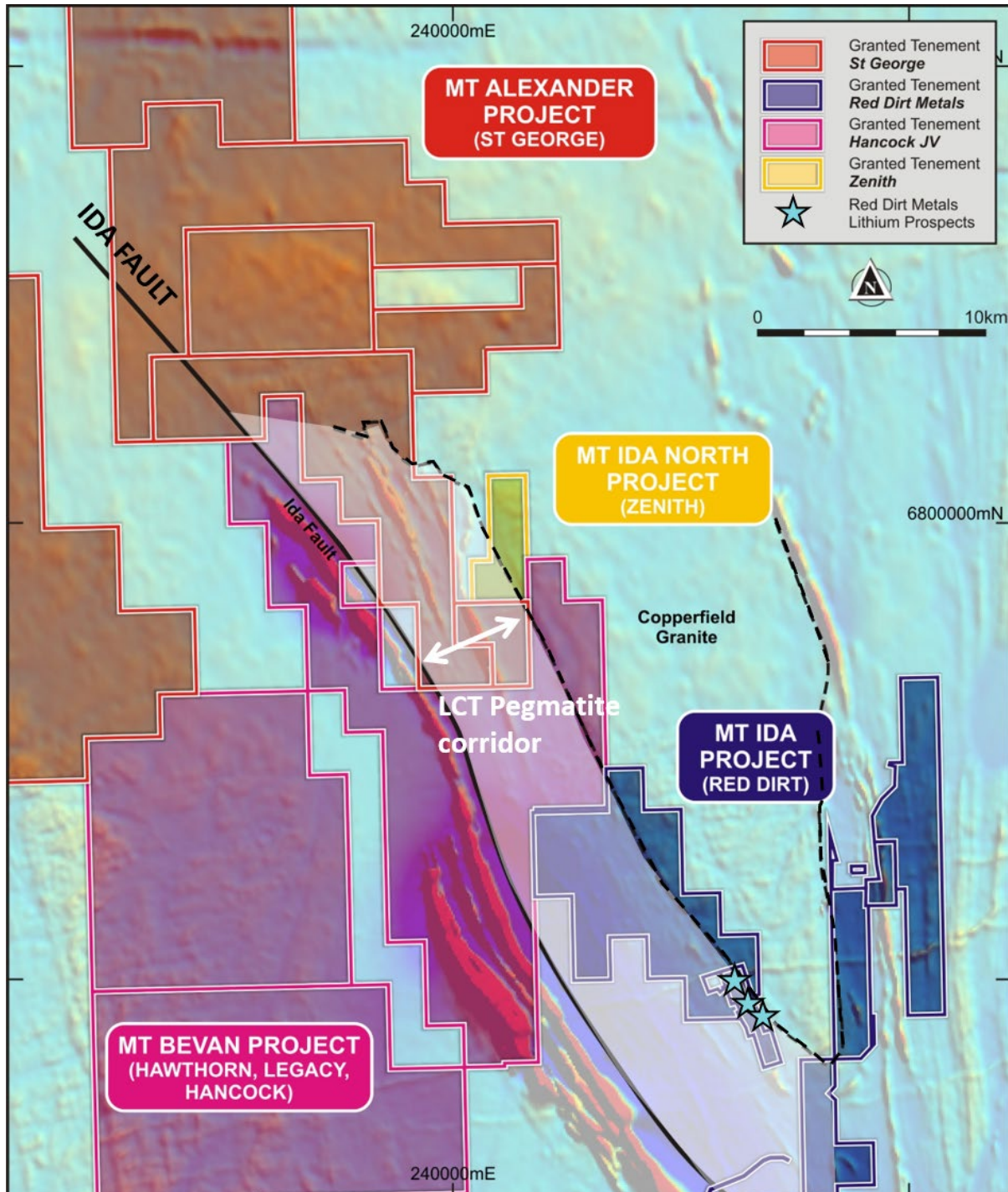


Figure 3 – map showing the location of lithium projects along strike to St George’s Mt Alexander Project (against magnetic RTP 1VD).

Table 1 – Assay results for rock chip samples from pegmatites and granites collected in Phase 1 of the lithium sampling programme at Mt Alexander Project.

Sample ID	Point East	Point North	Li ₂ O	Cs_ppm	Ta_ppm	Rb_ppm	Prospect
MARK047	242913	6796431	228	6.7	20.5	1,260	Jailbreak
MARK049	243014	6796377	46	4.2	32	363	Jailbreak
MARK050	242921	6796433	206	5.9	13.3	1,140	Jailbreak
MARK061	242537	6796498	31	0.3	-0.1	2.2	Jailbreak
MARK062	242808	6796446	26	1.4	42.7	101	Jailbreak
MARK063	242923	6796431	87	7.5	4.8	1,580	Jailbreak
MARK064	242942	6796438	24	1.2	125	111	Jailbreak
MARK065	242960	6796493	15	9.5	51.4	1,290	Jailbreak
MARK066	242958	6796610	3	4.8	8.8	909	Jailbreak
MARK067	242857	6796448	4	43.7	4.4	6,030	Jailbreak
MARK074	232402	6806406	11	3.3	0.7	212	Stricklands
MARK075	232481	6806381	6	3.3	4.5	353	Stricklands
MARK076	232539	6806367	4	3.1	5.7	298	Stricklands
MARK077	232574	6806373	15	1.6	1.5	175	Stricklands
MARK079	232528	6806432	18	4.2	1.4	344	Stricklands
MARK081	232599	6806361	4	2	6.8	211	Stricklands
MARK082	232601	6806311	3	4.7	2.4	479	Stricklands
MARK084	232593	6806207	72	5.3	1.6	368	Stricklands
MARK089	232590	6806504	5	1.5	5	409	Stricklands
MARK090	232629	6806337	6	3.3	1.1	535	Stricklands
MARK091	232660	6806250	12	9.5	3.1	916	Stricklands
MARK092	232676	6806202	10	5.4	2.3	517	Stricklands
MARK093	232674	6806184	17	8.3	4.4	713	Stricklands
MARK094	232695	6806122	4	4.5	9.7	479	Stricklands
MARK095	232744	6806489	9	0.5	12.6	54	Stricklands
MARK096	232745	6806477	5	4.5	8.5	545	Stricklands
MARK096	232745	6806477	10	4.5	8.3	537	Stricklands
MARK097	232693	6806448	3	6.7	5.7	753	Stricklands
MARK098	232640	6806410	3	6.5	3.9	793	Stricklands
MARK099	232751	6806145	6	10.8	1	1,100	Stricklands
MARK100	243167	6795927	19	0.3	30.4	11.8	Jailbreak
MARK101	242953	6796272	45	4.5	93.8	638	Jailbreak
MARK102	243099	6796344	95	3.9	62.3	455	Jailbreak
MARK103	243095	6796277	338	1.3	86.9	42.8	Jailbreak
MARK104	242957	6796241	31	0.7	46.4	48.4	Jailbreak
MARK105	240900	6796125	3	0.9	72.6	61.6	Jailbreak
MARK121	234688	6804038	2	4.5	6.3	651	Map Area 1
MARK122	234705	6803989	1	0.7	8.2	103	Map Area 1
MARK123	234740	6804063	4	4.4	0.3	609	Map Area 1
MARK124	234761	6804038	15	3.4	4.1	361	Map Area 1
MARK125	234760	6803975	4	3.3	2.1	554	Map Area 1
MARK126	234688	6803906	2	5.6	4.4	556	Map Area 1
MARK128	233873	6803778	13	7	0.7	1420	Map Area 1
MARK129	234112	6803475	6	3.6	9.7	645	Map Area 1
MARK130	236895	6802051	8	4.5	8.4	547	Map Area 1

About the Mt Alexander Project:

The Mt Alexander Project is located 120km south south-west of the Agnew-Wiluna Belt, which hosts numerous world-class nickel deposits. The Project comprises six granted exploration licences – E29/638, E29/548, E29/962, E29/954, E29/972 and E29/1041 – which are a contiguous package. A seventh granted exploration licence – E29/1093 – is located to the south-east of the core tenement package.

The Cathedrals, Stricklands, Investigators and Radar nickel-copper-cobalt-PGE discoveries are located on E29/638, which is held in joint venture by St George (75%) and Western Areas Limited, a wholly owned subsidiary of IGO Limited (25%). St George is the Manager of the Project, with Western Areas retaining a 25% non-contributing interest (in E29/638 only) until there is a decision to mine. All other Project tenements are owned 100% by St George.

Authorised for release by the Board of St George Mining Limited.

For further information, please contact:

John Prineas

Executive Chairman

St George Mining Limited

+61 411 421 253

john.prineas@stgm.com.au

Peter Klinger

Media and Investor Relations

Cannings Purple

+61 411 251 540

pklinger@canningspurple.com.au

Competent Person Statement:

The information in this report that relates to Exploration Targets, Exploration Results, Mineral Resources or Ore Reserves for the Mt Alexander Project is based on information compiled by Mr Dave Mahon, a Competent Person who is a Member of The Australasian Institute of Geoscientists. Mr Mahon is employed by St George Mining Limited to provide technical advice on mineral projects, and he holds performance rights issued by the Company.

Mr Mahon has sufficient experience that is relevant to the style of mineralisation and type of deposit under consideration and to the activity being undertaken to qualify as a Competent Person as defined in the 2012 Edition of the 'Australasian Code for Reporting of Exploration Results, Mineral Resources and Ore Reserves'. Mr Mahon consents to the inclusion in the report of the matters based on his information in the form and context in which it appears.

Forward Looking Statements:

This announcement includes forward-looking statements that are only predictions and are subject to known and unknown risks, uncertainties, assumptions and other important factors, many of which are beyond the control of St George, the directors and the Company's management. Such forward-looking statements are not guarantees of future performance.

Examples of forward-looking statements used in this announcement include use of the words 'may', 'could', 'believes', 'estimates', 'targets', 'expects', or 'intends' and other similar words that involve risks and uncertainties. These statements are based on an assessment of present economic and operating conditions, and on a number of assumptions regarding future events and actions that, as at the date of announcement, are expected to take place.

Actual values, results, interpretations or events may be materially different to those expressed or implied in this announcement. Given these uncertainties, recipients are cautioned not to place reliance on forward-looking statements in the announcement as they speak only at the date of issue of this announcement. Subject to any continuing obligations under applicable law and the ASX Listing Rules, St George does not undertake any

obligation to update or revise any information or any of the forward-looking statements in this announcement or any changes in events, conditions or circumstances on which any such forward-looking statement is based.

This announcement has been prepared by St George Mining Limited. The document contains background information about St George Mining Limited current at the date of this announcement.

The announcement is in summary form and does not purport to be all inclusive or complete. Recipients should conduct their own investigations and perform their own analysis in order to satisfy themselves as to the accuracy and completeness of the information, statements and opinions contained in this announcement.

The announcement is for information purposes only. Neither this announcement nor the information contained in it constitutes an offer, invitation, solicitation or recommendation in relation to the purchase or sale of shares in any jurisdiction. The announcement may not be distributed in any jurisdiction except in accordance with the legal requirements applicable in such jurisdiction. Recipients should inform themselves of the restrictions that apply to their own jurisdiction as a failure to do so may result in a violation of securities laws in such jurisdiction.

This announcement does not constitute investment advice and has been prepared without taking into account the recipient's investment objectives, financial circumstances or particular needs and the opinions and recommendations in this announcement are not intended to represent recommendations of particular investments to particular persons.

Recipients should seek professional advice when deciding if an investment is appropriate. All securities transactions involve risks, which include (among others) the risk of adverse or unanticipated market, financial or political developments. To the fullest extent of the law, St George Mining Limited, its officers, employees, agents and advisers do not make any representation or warranty, express or implied, as to the currency, accuracy, reliability or completeness of any information, statements, opinion, estimates, forecasts or other representations contained in this announcement. No responsibility for any errors or omissions from the announcement arising out of negligence or otherwise is accepted.

The following section is provided for compliance with requirements for the reporting of exploration results under the JORC Code, 2012 Edition.

Section 1 Sampling Techniques and Data

(Criteria in this section apply to all succeeding sections)

Criteria	JORC Code explanation	Commentary
Sampling techniques	<i>Nature and quality of sampling (eg cut channels, random chips, or specific specialised industry standard measurement tools appropriate to the minerals under investigation, such as down hole gamma sondes, or handheld XRF instruments, etc). These examples should not be taken as limiting the broad meaning of sampling.</i>	<p>Rock Chip: a sample is collected from in-situ material at surface adjudged by the geologist on site. The sample between 0.5-2kg is collected in a marked calico bag for submission for assay.</p> <p>Soils: Each soil sample is taken from a manually excavated pit approximately 300mm deep (depending on the nature of the sampling medium). The loose material at the bottom of the pit is placed through a series of sieves, with the fine fraction of the 180micron sieve placed into pre-numbered paper geochemical sample envelope.</p> <p>The sample envelopes are then sent to a certified laboratory for assay.</p>
	<i>Include reference to measures taken to ensure sample representivity and the appropriate calibration of any measurement tools or systems used.</i>	<p>Rock Chips: Samples are collected by hand or dislodged by geo pick of in-situ material at surface.</p> <p>Soils: Each sample is sourced from the loose material at the bottom of the sample pit which is considered to be representative of the profile being targeted.</p>
	<p><i>Aspects of the determination of mineralisation that are Material to the Public Report.</i></p> <p><i>In cases where 'industry standard' work has been done this would be relatively simple (eg 'reverse circulation drilling was used to obtain 1 m samples from which 3 kg was pulverised to produce a 30 g charge for fire assay'). In other cases more explanation may be required, such as where there is coarse gold that has inherent sampling problems. Unusual commodities or mineralisation types (eg submarine nodules) may warrant disclosure of detailed information.</i></p>	<p>Rock Chips: samples are taken under the discretion of geologists with the intention of taking a representative rock chip sample for the parent rock sampled.</p> <p>Soils: A single sample are taken on a predetermined spacing and collected using uniquely numbered calico bags. Each sample collected for assay typically weighs 50g, and once dried, is prepared for the laboratory.</p> <p>Pulverisation further reduces the particle size with 90% of the material passing 75micron.</p> <p>The sample is then assayed using the Aqua Regia Digest method.</p>
Drilling techniques	<i>Drill type (eg core, reverse circulation, open-hole hammer, rotary air blast, auger, Bangka, sonic, etc) and details (eg core diametre, triple or standard tube, depth of diamond tails, face-sampling bit or other type, whether core is oriented and if so, by what method, etc).</i>	N/A
Drill sample recovery	<i>Method of recording and assessing core and chip sample recoveries and results assessed.</i>	N/A

Criteria	JORC Code explanation	Commentary
	<i>Measures taken to maximise sample recovery and ensure representative nature of the samples.</i>	N/A
	<i>Whether a relationship exists between sample recovery and grade and whether sample bias may have occurred due to preferential loss/gain of fine/coarse material.</i>	To date, no sample recovery issues have yet been identified that would impact on potential sample bias in the soil profile or sampling methods.
Logging	<i>Whether core and chip samples have been geologically and geotechnically logged to a level of detail to support appropriate Mineral Resource estimation, mining studies and metallurgical studies.</i>	Each sample is recorded for the lithology, type and nature of the soil. The surface topography and type is recorded at the sample location.
	<i>Whether logging is qualitative or quantitative in nature. Core (or costean, channel, etc) photography.</i>	The logging is both qualitative and quantitative in nature, with sample recovery and volume being recorded,
	<i>The total length and percentage of the relevant intersections logged.</i>	N/A
Sub-sampling techniques and sample preparation	<i>If core, whether cut or sawn and whether quarter, half or all core taken.</i>	N/A
	<i>If non-core, whether riffled, tube sampled, rotary split, etc and whether sampled wet or dry.</i>	All samples were dry when sampled.
	<i>For all sample types, the nature, quality and appropriateness of the sample preparation technique.</i>	Samples are dried, crushed and pulverized to produce a homogenous representative sub-sample for analysis at the laboratory.
	<i>Quality control procedures adopted for all sub-sampling stages to maximise representivity of samples.</i>	No QAQC are inserted within the submitted samples and are not deemed necessary for this stage of exploration. Internal laboratory QAQC measures are considered sufficient
	<i>Measures taken to ensure that the sampling is representative of the in situ material collected, including for instance results for field duplicate/second-half sampling.</i>	The sample material is sourced from the bottom of the pits with efforts made to reduce the amount of surficial 'float' material entering the sample. Sieving of the sample helps to homogenise and reduce size fraction of the sample
	<i>Whether sample sizes are appropriate to the grain size of the material being sampled.</i>	The sample sizes are considered to be appropriate to screen for the geochemical signatures of base metal sulphide mineralisation and associated geology.
Quality of assay data and laboratory tests	<i>The nature, quality and appropriateness of the assaying and laboratory procedures used and whether the technique is considered partial or total.</i>	The soil samples are analysed using an Four Acid Digest. Al, Ca, Cr, Cu, Fe, K, Mg, Mn, P, S, Ti, V and Zn have been determined by Inductively Coupled Plasma (ICP) Optical Emission Spectrometry. Ag, As, Bi, Cd, Co, Li, Mo, Nb, Ni, Pb, Sb, Sn, Te, W, Cs, Rb, Ta have been determined by Inductively Coupled Plasma (ICP) Mass Spectrometry.

Criteria	JORC Code explanation	Commentary
		<p>Au, Pt and Pd have been determined by Fire assay.</p> <p>The assay method and detection limits are appropriate for analysis of the elements required.</p>
	<p><i>For geophysical tools, spectrometres, handheld XRF instruments, etc, the parametres used in determining the analysis including instrument make and model, reading times, calibrations factors applied and their derivation, etc.</i></p>	<p>A handheld XRF instrument (Olympus Innov-X Spectrum Analyser) is used to provide an initial assay of the geochemical sample onsite. One reading is taken per sample. The instruments are serviced and calibrated at least once a year. Field calibration of the XRF instrument using standards is periodically performed (usually daily).</p> <p>The handheld XRF results are only used for preliminary assessment and reporting of element compositions, prior to the receipt of assay results from the certified laboratory.</p>
	<p><i>Nature of quality control procedures adopted (eg standards, blanks, duplicates, external laboratory checks) and whether acceptable levels of accuracy (ie lack of bias) and precision have been established.</i></p>	<p>Laboratory QAQC involves the use of internal lab standards using certified reference material (CRMs), blanks and pulp duplicates as part of in-house procedures. The Company also submits a suite of CRMs, blanks and selects appropriate samples for duplicates.</p> <p>Sample preparation checks for fineness are performed by the laboratory to ensure the grind size of 90% passing 75µm is being attained.</p>
Verification of sampling and assaying	<p><i>The verification of significant intersections by either independent or alternative company personnel.</i></p>	<p>Significant intersections and assays are verified by the Company's Technical Director and Consulting Field Geologist.</p>
	<p><i>The use of twinned holes.</i></p>	<p>N/A</p>
	<p><i>Documentation of primary data, data entry procedures, data verification, data storage (physical and electronic) protocols.</i></p>	<p>Primary data is captured onto a laptop using acQuire software and includes geological logging, sample data and QA/QC information. This data, together with the assay data, is entered into the St George Mining central SQL database which is managed by external consultants.</p>
	<p><i>Discuss any adjustment to assay data.</i></p>	<p>No adjustments or calibrations will be made to any primary assay data collected for the purpose of reporting assay grades and mineralised intervals. For the geological analysis, standards and recognised factors may be used to calculate the oxide from assayed elements, or to calculate volatile free mineral levels in rocks.</p>
Location of data points	<p><i>Accuracy and quality of surveys used to locate drill holes (collar and down-hole surveys), trenches, mine workings and other locations used in Mineral Resource estimation.</i></p>	<p>The sample locations are determined by using a handheld GPS system with an expected accuracy of +/-5m for easting, northing and elevation. This is considered adequate for the type and purpose of the surveys.</p>
	<p><i>Specification of the grid system used.</i></p>	<p>The grid system used is GDA94, MGA Zone 51.</p>
	<p><i>Quality and adequacy of topographic control.</i></p>	<p>Elevation data has been acquired using DGPS surveying at specific location across the project, including drill collars, and entered into the central database. A topographic surface has been created using this elevation data. The local elevation data is also captured with the handheld GPS when sampling.</p>
Data spacing and distribution	<p><i>Data spacing for reporting of Exploration Results.</i></p>	<p>The soil samples were taken at 20m intervals along the geochemical survey lines.</p>
	<p><i>Whether the data spacing and distribution is sufficient to establish the degree of geological and grade continuity appropriate for the Mineral Resource and Ore Reserve estimation procedure(s) and classifications applied.</i></p>	<p>N/A</p>

Criteria	JORC Code explanation	Commentary
	<i>Whether sample compositing has been applied.</i>	No compositing has been applied to the exploration results.
Orientation of data in relation to geological structure	<i>Whether the orientation of sampling achieves unbiased sampling of possible structures and the extent to which this is known, considering the deposit type.</i>	Rock Chips: The rock chip samples are taken at the discretion of the geologist on site. However, the orientation of key structures may be noted whilst mapping exercises are undertaken. The soil samples are taken at regular intervals, at a near perpendicular orientation (unless otherwise stated). However, the orientation of key structures may be locally variable and any relationship to potential mineralisation has yet to be identified.
	<i>If the relationship between the drilling orientation and the orientation of key mineralised structures is considered to have introduced a sampling bias, this should be assessed and reported if material.</i>	No orientation based sampling bias has been identified in the data to date.
Sample security	<i>The measures taken to ensure sample security.</i>	Chain of Custody is managed by the Company until samples pass to a duly certified assay laboratory for subsampling and assaying. The sample bags are stored on secure sites and delivered to the assay laboratory by the Company or a competent agent. When in transit, they are kept in locked premises. Transport logs have been set up to track the progress of samples. The chain of custody passes upon delivery of the samples to the assay laboratory.
Audits or reviews	<i>The results of any audits or reviews of sampling techniques and data.</i>	Sampling techniques and procedures are regularly reviewed internally, as is the data. The soils programme has been reviewed by third parties and consultant geologists.

Section 2 Reporting of Exploration Results (Criteria listed in section 1 will also apply to this section where relevant)

Criteria	JORC Code explanation	Commentary
Mineral Tenement and Land Status	<i>Type, name/reference number, location and ownership including agreements or material issues with third parties including joint ventures, partnerships, overriding royalties, native title interests, historical sites, wilderness or national park and environmental settings.</i>	The Mt Alexander Project is comprised of six granted Exploration Licences (E29/638, E29/548, E29/954, E29/962, E29/972 and E29/1041). Tenement E29/638 is held in Joint Venture between St George (75% interest) and Western Areas (25% interest). E29/638 and E29/548 are also subject to a royalty in favour of a third party that is outlined in the ASX Release dated 17 December 2015 (as regards E29/638) and the ASX release dated 18 September 2015 (as regards E29/548).
	<i>The security of the tenure held at the time of reporting along with any known impediments to obtaining a licence to operate in the area.</i>	No environmentally sensitive sites have been identified on the tenements. A registered Heritage site known as Willsmore 1 (DAA identification 3087) straddles tenements E29/548 and E29/638. All tenements are in good standing with no known impediments.
Exploration Done by Other Parties	<i>Acknowledgment and appraisal of exploration by other parties.</i>	Exploration on tenements E29/638 and E29/962 has been largely for komatiite-hosted nickel sulphides in the Mt Alexander Greenstone Belt. Exploration in the northern section of E29/638 (Cathedrals Belt) and also limited exploration on E29/548 has been for komatiite-hosted Ni-Cu sulphides in granite terrane. No historic exploration has been identified on E29/954 or E29/972. Mafic-Ultramafic intrusion related high grade nickel-copper-PGE sulphides were discovered at the Mt Alexander Project in 2008. Drilling was completed to test co-incident electromagnetic (EM) and magnetic anomalies associated with nickel-PGE enriched gossans in the northern section of current tenement E29/638. The drilling identified high grade nickel-copper mineralisation in granite-hosted and East-West orientated ultramafic units and the discovery was named the Cathedrals Prospect.

Criteria	JORC Code explanation	Commentary
Geology	<i>Deposit type, geological setting and style of mineralisation</i>	<p>The Mt Alexander Project is at the northern end of a western bifurcation of the Mt Ida Greenstones. The greenstones are bound to the west by the interpreted Ida Fault, a significant Craton-scale structure that marks the boundary between the Kalgoorlie Terrane (and Eastern Goldfields Superterrane) to the east and the Youanmi Terrane to the west.</p> <p>The Mt Alexander Project is prospective for further high-grade nickel-mineralisation (both komatiite and mafic-ultramafic intrusive hosted) and also precious metal mineralisation (i.e. orogenic gold) that is typified elsewhere in the Yilgarn Craton.</p>
Drill hole information	<p><i>A summary of all information material to the understanding of the exploration results including tabulation of the following information for all Material drill holes:</i></p> <ul style="list-style-type: none"> • <i>Easting and northing of the drill hole collar</i> • <i>Elevation or RL (Reduced Level – elevation above sea level in metres) of the drill hole collar</i> • <i>Dip and azimuth of the hole</i> • <i>Down hole length and interception depth</i> • <i>Hole length</i> 	Drill hole collar locations are shown in the maps and tables included in the body of the relevant ASX releases.
Data aggregation methods	<p><i>In reporting Exploration Results, weighting averaging techniques, maximum and/or minimum grade truncations (e.g. cutting of high grades) and cut-off grades are usually Material and should be stated.</i></p> <p><i>Where aggregated intercepts incorporate short lengths of high grade results and longer lengths of low grade results, the procedure used for such aggregation should be stated and some typical examples of such aggregations should be shown in detail.</i></p> <p><i>The assumptions used for any reporting of metal equivalent values should be clearly stated.</i></p>	<p>Reported assay intersections are length and density weighted. Significant intersections are determined using both qualitative (i.e. geological logging) and quantitative (i.e. lower cut-off) methods.</p> <p>For massive sulphide intersections, the nominal lower cut-off is 2% for either nickel or copper. For disseminated, blebby and matrix sulphide intersections the nominal lower cut-off for nickel is 0.3%.</p> <p>Any high-grade sulphide intervals internal to broader zones of sulphide mineralisation are reported as included intervals.</p> <p>Any disseminated, matrix, brecciated or stringer sulphides with (usually) >1% nickel or copper on contact with massive sulphide mineralisation are grouped with the massive sulphides for calculating significant intersections and the massive sulphide mineralisation is reported as an including intersection.</p> <p>No metal equivalent values are used for reporting exploration results.</p>
Relationship between mineralisation widths and intercept lengths	<i>These relationships are particularly important in the reporting of exploration results. If the geometry of the mineralisation with respect to the drill hole angle is known, its nature should be reported. If it is not known and only the down hole lengths are reported, there should be a clear statement to this effect.</i>	Assay intersections are reported as down hole lengths. Drill holes are planned as perpendicular as possible to intersect the target EM plates and geological targets so downhole lengths are usually interpreted to be near true width.
diagrams	<i>Appropriate maps and sections (with scales) and tabulations of intercepts should be included for any significant discovery being reported. These should include, but not be limited to a plane view of drill hole collar locations and appropriate sectional views.</i>	A prospect location map, cross section and long section are shown in the body of relevant ASX Releases.
Balanced Reporting	<i>Where comprehensive reporting of all Exploration Results is not practical, representative reporting of both low and high grades and/or widths should be practiced to avoid misleading reporting of Exploration Results.</i>	<p>Reports on recent exploration can be found in ASX Releases that are available on our website at www.stgm.com.au:</p> <p>The exploration results reported are representative of the mineralisation style with grades and/or widths reported in a consistent manner.</p>

Criteria	JORC Code explanation	Commentary
Other substantive exploration data	<i>Other exploration data, if meaningful and material, should be reported including (but not limited to): geological observation; geophysical survey results; geochemical survey results; bulk samples – size and method of treatment; metallurgical test results; bulk density, groundwater, geotechnical and rock characteristics; potential deleterious or contaminating substances.</i>	All material or meaningful data collected has been reported.
Further Work	<i>The nature and scale of planned further work (e.g. tests for lateral extensions or depth extensions or large – scale step – out drilling).Diagrams clearly highlighting the areas of possible extensions, including the main geological interpretations and future drilling areas, provided this information is not commercially sensitive.</i>	A discussion of further exploration work underway is contained in the body of recent ASX Releases. Further exploration will be planned based on ongoing drill results, geophysical surveys and geological assessment of prospectivity.