

6 April 2017

DRILLING SUCCESS CONTINUES AT MT ALEXANDER

HIGHLIGHTS:

- **Further massive nickel-copper sulphides discovered at the Investigators Prospect**
- **Three more electromagnetic (EM) conductors successfully tested returning high grade massive nickel-copper sulphides with average grades of 7%Ni and 2.3%Cu (based on field XRF analysis)**
- **Potential to further extend the known mineralisation in the Cathedrals Belt with at least another 14 planned drill holes**
- **Downhole EM (DHEM) surveys are underway on the completed drill holes to investigate for extensions to mineralisation and to define conductive sources**
- **Moving loop EM (MLEM) survey over the western extension of the Cathedrals Belt has identified anomalous EM responses proximal to the Ida Fault**
- **Argonaut appointed as financial adviser to St George in regard to strategic opportunities to maximise value of the Mt Alexander Project**

DRILLING SUCCESS CONTINUES AT THE MT ALEXANDER PROJECT

St George Mining Limited (ASX: **SGQ**) ('St George Mining' or 'the Company') is pleased to announce that further massive nickel-copper sulphides have been discovered at the Investigators Prospect in the major drill programme currently underway at the Mt Alexander Project in Western Australia.

Three of the five drill holes completed to date have successfully tested three separate EM conductors. These drill holes - MAD43, MAD44 and MAD45 – have all intersected massive nickel-copper sulphides. The other two drill holes - MAD41 and MAD42 - intersected prospective ultramafic but not the target EM conductors. DHEM surveys are being completed in these drill holes to better define the location of the EM conductors, which were modelled from surface EM data.

The drill programme at Mt Alexander is continuing with 14 planned holes yet to be drilled, and additional drill holes likely to be added after the DHEM surveys. This important drill programme is on track to discover more high grade nickel-copper sulphides and to expand the mineralisation in the Cathedrals Belt.

St George's continued exploration success at the Mt Alexander Project is presenting the Company with strategic M&A opportunities for development of the Project. St George has appointed Argonaut as its financial adviser to assist in pursuing strategic opportunities that maximise shareholder value.

St George Mining Executive Chairman, John Prineas said:

"The discovery of further high grade nickel-copper sulphide mineralisation at Investigators confirms the potential to significantly expand the known mineralisation at this prospect, where mineralisation has already been shown to be present recurrently over a strike length of 1.3km.

"We are very excited by this early success and the potential for more discoveries over the next few weeks."

CONTINUED SUCCESS DRILLING EM CONDUCTORS

MAD43 tested an off-hole DHEM plate (MAD39 p_1) at Investigators and was drilled to a downhole depth of 180m. The drill hole has intersected a 10.2m thick ultramafic unit from 147.8m with nickel-copper sulphides summarised below:

- a 9.42m thick interval, from 147.8m, of ultramafic with weak-moderate blebby and disseminated sulphides
- a 0.73m thick interval, from 157.22m, of massive sulphides with spot XRF readings averaging 5.1%Ni and 2.15%Cu

MAD44 tested another DHEM plate (MAD39 p_2) at Investigators, located approximately 65m to the west of the DHEM plate tested by MAD43. MAD44 was also drilled to a downhole depth of 180m and has intersected:

- 8.14m of ultramafic from 147.35m with rare disseminated sulphides
- remobilised massive to semi-massive sulphides in granite just below the ultramafic contact from 155.69m to 156.11m. XRF readings of the massive sulphide shows variation in the nickel content from 5-6%Ni in the core to 27%Ni in the coarse grained pentlandite-rich rims

The massive sulphides in MAD44 are interpreted to have been remobilised from a proximal body of nickel-copper sulphide mineralisation. A DHEM survey will be completed in MAD44 next week to investigate for any conductive bodies around the drill hole that may represent the potential source of the mineralisation.

MAD45 tested SAMSON Anomaly 6 at Investigators. The drill hole intersected ultramafic from 165.2m downhole with the profile of the sulphide mineralisation intersected as follows:

- weak disseminated and blebby sulphides from 171m to 174m
- moderate blebby and disseminated sulphides from 174m to 178m
- 0.88m of strong disseminated and matrix sulphides from 178m to 178.88m
- 0.2m of massive sulphide from 178.88m to 179.08m, with spot XRF readings averaging 4%Ni and 0.1%Cu
- 0.68m of matrix and strong disseminated sulphides from 179.08m to 179.76m, with spot XRF readings averaging 1%Ni and 0.03%Cu
- 0.37m of massive sulphide from 179.76m to 180.13m, with spot XRF readings averaging 7.9%Ni and 2.9%Cu

Based on the intersection angle of the drilling and interpreted EM plates, the downhole widths are interpreted to be near to true widths, but will be reviewed again with DHEM survey results.

MAD43 and MAD44 drill holes are approximately 50m apart, and MAD45 is approximately a further 500m to the west of those drill holes. The discovery of further high grade mineralisation over such a broad area and associated with the same ultramafic unit at Investigators, supports the potential for further discoveries and extensions to the known mineralisation at Investigators.

The portable XRF analysis is showing high grades of nickel and copper in the mineralisation intersected by these drill holes. Laboratory assays will confirm these values and we expect the assays to also indicate high values of cobalt and PGEs consistent with previous high-grade mineralisation intersected in the Cathedrals Belt to date.

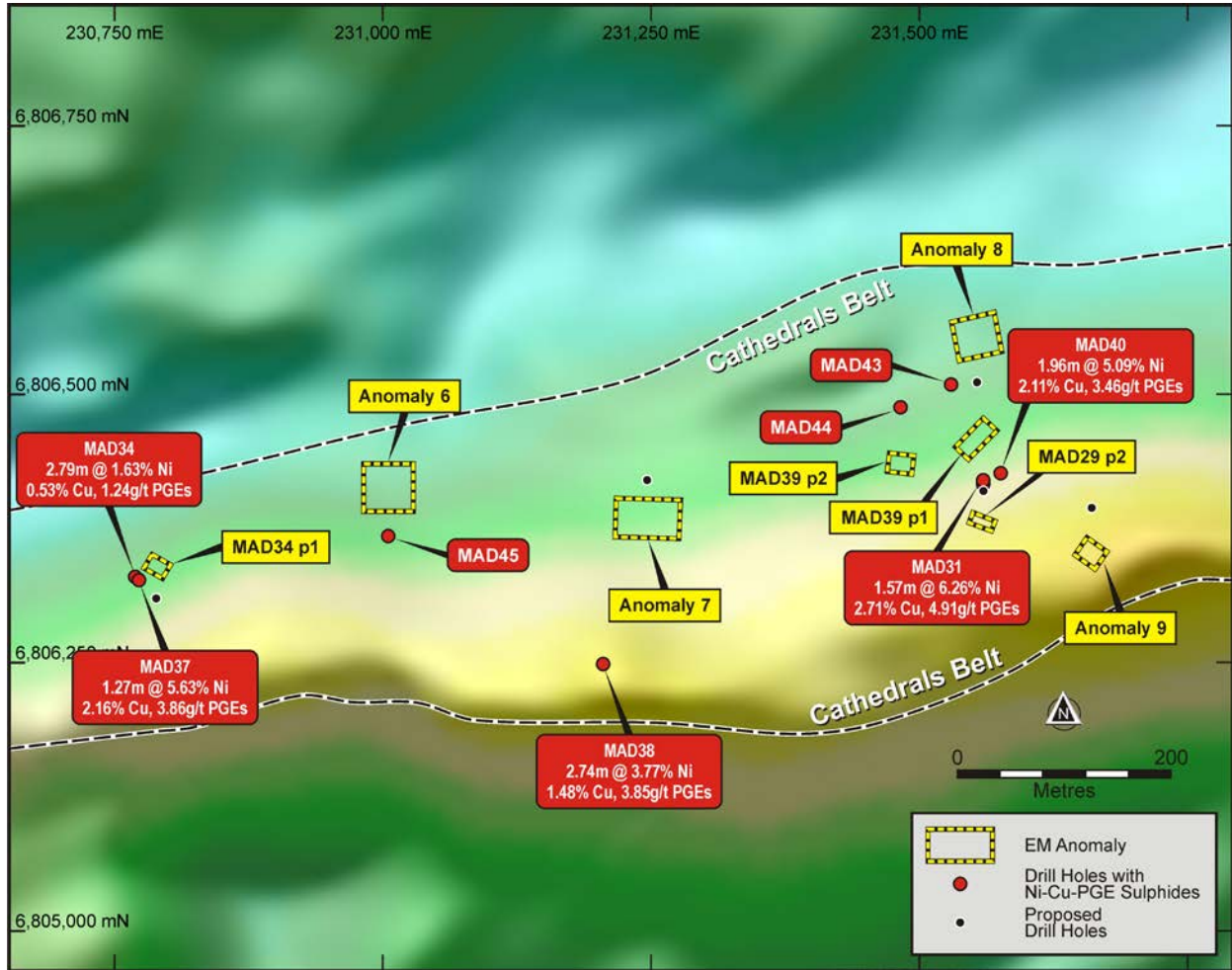


Figure 1 – a plan view of the Investigators Prospect (over TMI magnetics) showing the drill hole collar locations in the current programme, as well as previous drill holes. Drill holes with nickel-copper sulphides are shown in red.



Figure 2 – photograph of drill core from MAD43 showing massive nickel-copper sulphide interval from 157.22m to 157.95m below ultramafic with blebby sulphides.



Figure 3 – massive nickel-copper sulphides in MAD44 which included pentlandite-rich rims that recorded 27%Ni in spot XRF readings.

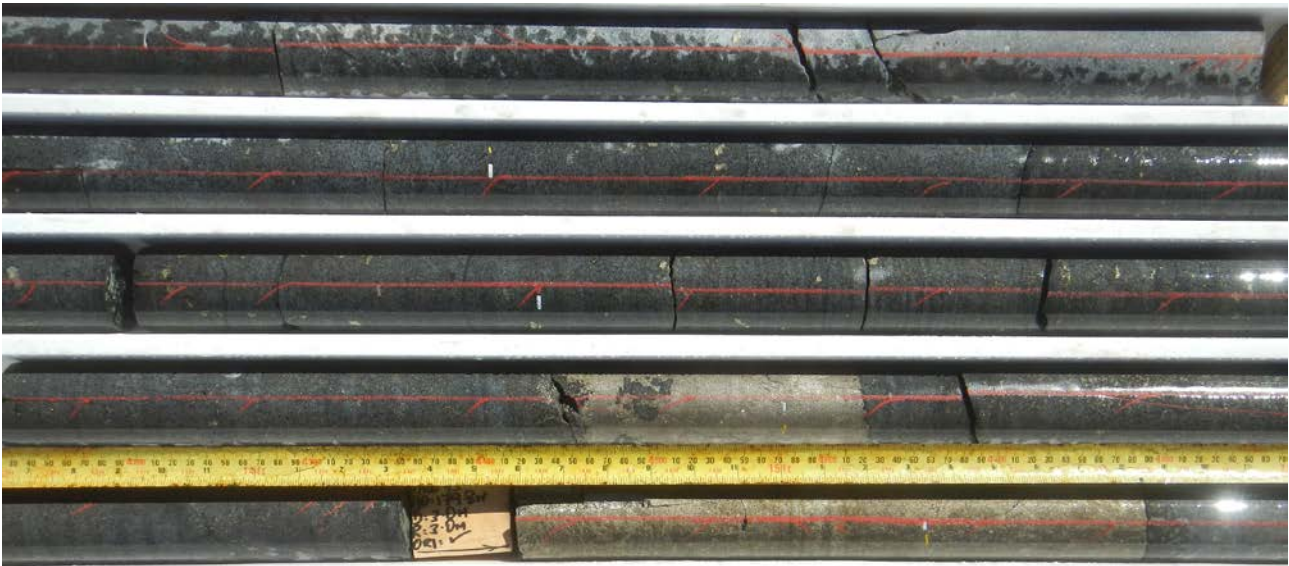


Figure 4 – photograph of drill core from MAD45 showing massive nickel-copper sulphides from 178.88-179.08m and 179.76-180.13m with interstitial matrix and heavy disseminated sulphides.

MLEM SURVEY AT THE CATHEDRALS BELT

Figure 5 illustrates the planned stations for the MLEM survey currently underway over the new target areas in the Cathedrals Belt and the parallel structure 1km to the south of the Belt. The MLEM survey is being completed using transmitter loops of 200m x 200m, line spacing of 200m and station spacing of 100m.

The MLEM survey has been completed over the new target area where the Cathedrals Belt intersects the Ida Fault. The intersection of these structures may have operated as a control of the mineralisation in the Cathedrals Belt.

Two anomalous EM responses have been detected in this area, and are being further evaluated in conjunction with our geophysical consultants Newexco.

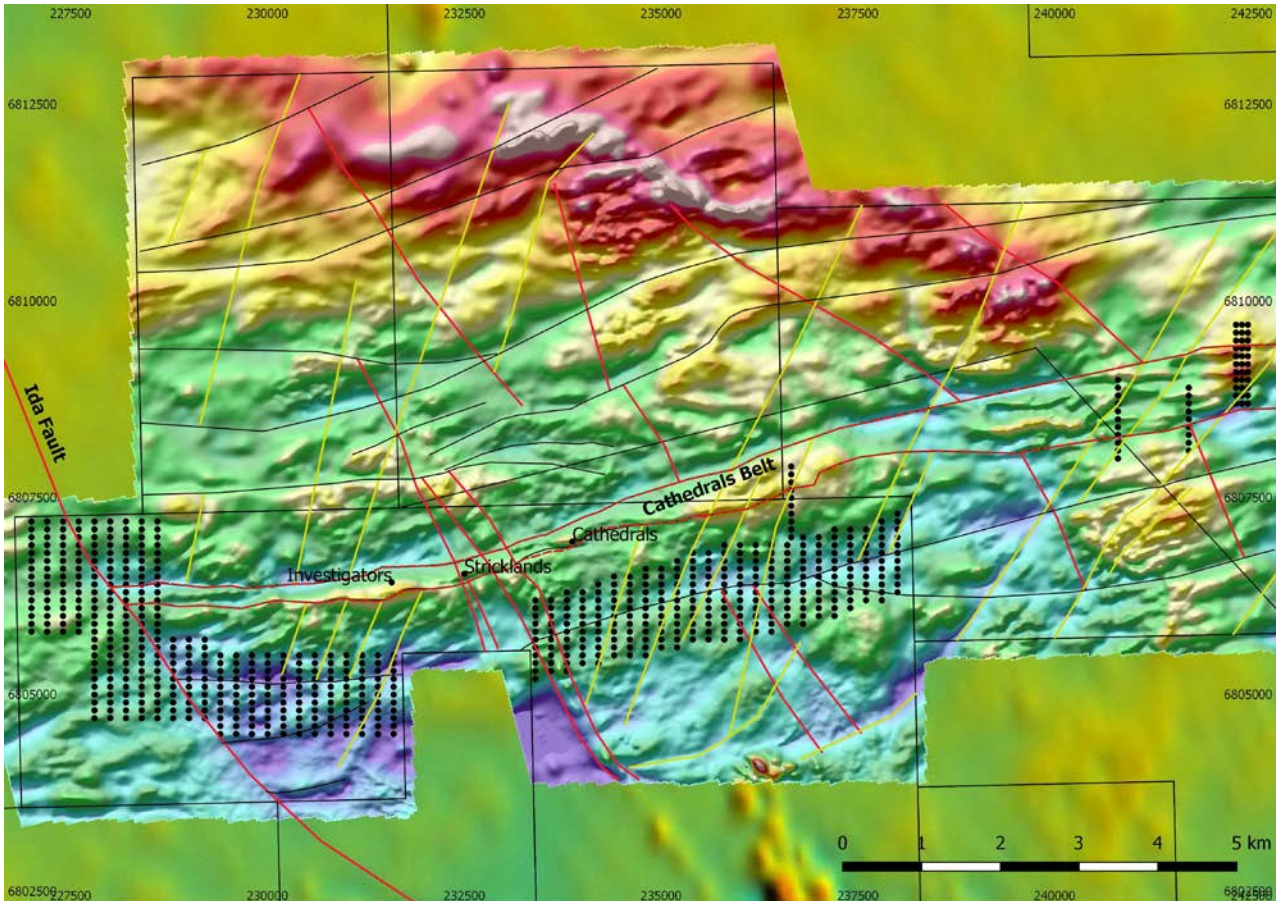


Figure 5 – a plan view of the Cathedrals Belt (against TMI RTP magnetics) showing the planned MLEM survey stations that will test unexplored structures for EM targets.

CURRENT DRILL PROGRAMME

Table 1 shows drill hole details for drill holes both planned and completed in the current diamond drill programme. Drill hole MAD46 is currently being drilled.

In addition to MAD43, MAD44 and MAD45, two further drill holes have been completed – MAD41 and MAD42. These drill holes targeted the SAMSON Anomalies 7 and 8 at Investigators, respectively.

MAD41 was completed to a downhole depth of 237.9m, and targeted an EM plate modelled at a depth of 207m with conductivity of 15,000 Siemens. The drill hole intersected weakly mineralised ultramafic from 136.9-140.6m however did not intersect any material that could explain this very strong EM conductor.

MAD42 was completed to a downhole depth of 275m, and targeted an EM plate modelled at a depth of 244m with conductivity of 24,650 Siemens. This drill hole intersected two thin ultramafics around 190m however also did not intersect any material that could explain the very strong modelled EM conductor.

A DHEM survey will be completed in each of these drill holes to better define the EM responses for future drilling. Any off-hole EM conductors identified will be drilled in the current programme, which is scheduled to continue for 4 to 6 weeks.

Order of Drilling	HOLEID	GDA 94_51 East	GDA 94_51 North	Depth (m)	Dip	Azimuth	Depth to Target (m)	Target EM Plate
1	MAD41	231246	6806420	237.9	-80	180	207	SAMSON A7
2	MAD42	231553	6806511	275	-80	0	244	SAMSON A8
3	MAD43	231529	6806509	180	-70	160	156	DHEM MAD39p1
4	MAD44	231482	6806488	180	-70	180	155	DHEM MAD39p2
5	MAD45	231005	6806369	229	-80	0	242	SAMSON A6
6	MAD46	230789	6806310	145	-75	0	112	DHEM MAD34p1
7	InvProp_12	231559	6806410	130	-70	180	85	DHEM MAD29p2
8	InvProp_19	231660	6806394	150	-70	180	122	SAMSON A9
9	ST_PROP3	232466	6806486	85	-65	0	54	DHEM MAD21/23p1
10	ST_PROP1	232499	6806509	100	-70	0	49	Geological only target
11	ST_PROP2	232538	6806571	100	-70	105	67	DHEM MAD27
12	ST_PROP4	232738	6806664	140	-65	203	110	DHEM MAD20p2
13	CATH_PROP1	233893	6807019	130	-65	180	105	DHEM MAD11/12
14	CATH_PROP2	233890	6806992	115	-65	180	91	DHEM MAD11/12
15	CATH_PROP3	233847	6807019.5	90	-60	180	66	DHEM MAD35p2
16	CATH_PROP4	233794	6806961	90	-70	170	61	DHEM MAD10/13
17	CATH_PROP5	233773	6807075	200	-60	180	177	DHEM MAD19p2
18	CATH_PROP6	233696	6807051	200	-60	180	171	DHEM MAD17p1
19	CATH_PROP7	233748.5	6806985	90	-55	180	65	DHEM MARC49p1

Table 1 – Drill holes for the March/April 2017 diamond drill programme at Mt Alexander. Drill holes with ‘MAD’ prefixes are completed drill holes and corresponding depths are actual depths, with the exception of MAD46 which is in progress.

ABOUT THE MT ALEXANDER PROJECT

The Mt Alexander Project is located 120km south-southwest of the Agnew-Wiluna belt which hosts numerous world class nickel deposits. The Project comprises four granted exploration licences – E29/638, E29/548, E29/962 and E29/954.

The Cathedrals, Stricklands and Investigators nickel-copper-PGE discoveries are located on E29/638, which is held in joint venture by Western Areas Limited (25%) and St George (75%). St George is the Manager of the Project with Western Areas retaining a 25% non-contributing interest in the Project (in regard to E29/638 only) until there is a decision to mine.

ABOUT ARGONAUT:

Argonaut is a full service financial advisory, stockbroking & research and investment house with offices in Perth and Hong Kong. Argonaut is technically driven and focused on natural resource companies and businesses that service the metals, mining, energy and agri-business sectors. Argonaut has an established track record of creating significant wealth for clients. For further information see www.argonaut.com

For further information, please contact:

John Prineas

Executive Chairman

St George Mining Limited

(+61) 411 421 253

John.prineas@stgm.com.au

Colin Hay

Professional Public Relations

(+61) 08 9388 0944 mob 0404 683 355

colin.hay@ppr.com.au

Competent Person Statement:

The information in this report that relates to Exploration Targets, Exploration Results, Mineral Resources or Ore Reserves is based on information compiled by Mr Matthew McCarthy, a Competent Person who is a Member of The Australian Institute of Geoscientists. Mr McCarthy is employed by St George Mining Limited.

Mr McCarthy has sufficient experience that is relevant to the style of mineralisation and type of deposit under consideration and to the activity being undertaken to qualify as a Competent Person as defined in the 2012 Edition of the Joint Ore Reserves Committee (JORC) Australasian Code for Reporting of Exploration Results, Mineral Resources and Ore Reserves. Mr McCarthy consents to the inclusion in the report of the matters based on his information in the form and context in which it appears.

The following sections are provided for compliance with requirements for the reporting of exploration results under the JORC Code, 2012 Edition.

Section 1 Sampling Techniques and Data

(Criteria in this section apply to all succeeding sections)

Criteria	JORC Code explanation	Commentary
Sampling techniques	<i>Nature and quality of sampling (eg cut channels, random chips, or specific specialised industry standard measurement tools appropriate to the minerals under investigation, such as down hole gamma sondes, or handheld XRF instruments, etc.). These examples should not be taken as limiting the broad meaning of sampling.</i>	<p>The sections of the core that are selected for assaying are marked up and then recorded on a sample sheet for cutting and sampling at the certified assay laboratory. Samples of HQ or NQ2 core are cut just to the right of the orientation line where available using a diamond core saw, with half core sampled lengthways for assay.</p> <p>The MLEM survey will be conducted using 200x200m loops to generate 100 amps, with a base frequency of 0.5Hz. Line spacing is typically 200m and station spacing typically 100m. Survey will use a fluxgate sensor.</p>
	<i>Include reference to measures taken to ensure sample representivity and the appropriate calibration of any measurement tools or systems used.</i>	Wherever possible the same side of the drill core is sampled to ensure sample is representative. Appropriate QAQC samples are inserted into the sequences as per industry best practice.
	<p><i>Aspects of the determination of mineralisation that are Material to the Public Report.</i></p> <p><i>In cases where 'industry standard' work has been done this would be relatively simple (eg 'reverse circulation drilling was used to obtain 1 m samples from which 3 kg was pulverised to produce a 30 g charge for fire assay'). In other cases more explanation may be required, such as where there is coarse gold that has inherent sampling problems. Unusual commodities or mineralisation types (eg submarine nodules) may warrant disclosure of detailed information.</i></p>	<p>Diamond core (both HQ and NQ2) is half-core sampled to geological boundaries no more than 1.5m and no less than 10cm. Samples less than 3kg are crushed to 10mm, dried and then pulverised to 75µm. Samples greater than 3kg are first crushed to 10mm then finely crushed to 3mm and input into the rotary splitters to produce a consistent output weight for pulverisation.</p> <p>Pulverisation produces a 40g charge for fire assay. Elements determined from fire assay are gold (Au), platinum (Pt) and palladium (Pd) with a 1ppb detection limit. To determine other PGE concentrations (Rh, Ru, Os, Ir) a 25g charge for nickel sulphide collect fire assay is used with a 1ppb detection limit.</p> <p>Other elements will be analysed using an acid digest and an ICP finish. These elements are: Ag, Al, As, Bi, Ca, Cd, Co, Cr, Fe, K, Li, Mg, Mn, Mo, Nb, Ni, P, Pb, S, Sb, Sn, Te, Ti, V, W, Zn. The sample is digested with nitric, hydrochloric, hydrofluoric and perchloric acids to effect as near to total solubility of the sample as possible. The sample is then analysed using ICP-AES or ICP-MS.</p> <p>LOI (Loss on Ignition) will be completed on selected samples to determine the percentage of volatiles released during heating of samples to 1000°C.</p>
Drilling techniques	<i>Drill type (eg core, reverse circulation, open-hole hammer, rotary air blast, auger, Bangka, sonic, etc) and details (eg core diameter, triple or standard tube, depth of diamond tails, face-sampling bit or other type, whether core is oriented and if so, by what method, etc).</i>	Diamond drilling is completed using HQ sized coring equipment through the weathered zone (mostly saprock) with 3m barrels, and then HQ or NQ2 in fresh rock with 3m or 6m barrels as required. The core is oriented using ACT II electric core orientation.
Drill sample recovery	<i>Method of recording and assessing core and chip sample recoveries and results assessed.</i>	Diamond core recoveries are recorded during drilling and reconciled during the core processing and geological logging. The core length recovered is measured for each run and recorded which is used to calculate core recovery as a percentage.

Criteria	JORC Code explanation	Commentary
	<i>Measures taken to maximise sample recovery and ensure representative nature of the samples.</i>	Measures taken to maximise core recovery include using appropriate core diameter and shorter barrel length through the weathered zone, which at Cathedrals and Investigators is mostly <25m and Stricklands <45m depth. Primary locations for core loss in fresh rock are on geological contacts and structural zones, and drill techniques are adjusted accordingly, and if possible these zones are predicted from the geological modelling.
	<i>Whether a relationship exists between sample recovery and grade and whether sample bias may have occurred due to preferential loss/gain of fine/coarse material.</i>	No sample recovery issues have yet been identified that would impact on potential sample bias in the competent fresh rocks that host the mineralised sulphide intervals.
Logging	<i>Whether core and chip samples have been geologically and geotechnically logged to a level of detail to support appropriate Mineral Resource estimation, mining studies and metallurgical studies.</i>	Geological logging is completed for all drill holes with lithology, alteration, mineralisation, structure and veining recorded. The logging is recorded digitally and imported in the St George Mining central database.
	<i>Whether logging is qualitative or quantitative in nature. Core (or costean, channel, etc.) photography.</i>	Logging is both qualitative and quantitative depending on the field being captured. Core is photographed with one tray per photo and stored digitally.
	<i>The total length and percentage of the relevant intersections logged.</i>	All drill holes are geologically logged in full.
Sub-sampling techniques and sample preparation	<i>If core, whether cut or sawn and whether quarter, half or all core taken.</i>	The HQ and NQ2 core is cut in half length ways just to the right of the orientation line where available using a diamond core saw. All samples are collected from the same side of the core where practicable.
	<i>If non-core, whether riffled, tube sampled, rotary split, etc and whether sampled wet or dry.</i>	No non-core holes were completed in the current drill program.
	<i>For all sample types, the nature, quality and appropriateness of the sample preparation technique.</i>	The entire sample is pulverised to 75µm using LM5 pulverising mills. Samples are dried, crushed and pulverized to produce a homogenous representative sub-sample for analysis. A grind quality target of 90% passing 75µm is used.
	<i>Quality control procedures adopted for all sub-sampling stages to maximise representivity of samples.</i>	Quality control procedures include submission of Certified Reference Materials (standards), duplicates and blanks with each sample batch. QAQC results are routinely reviewed to identify and resolve any issues.
	<i>Measures taken to ensure that the sampling is representative of the in situ material collected, including for instance results for field duplicate/second-half sampling.</i>	Duplicate samples are selected during sampling. Samples comprise two quarter core samples.
	<i>Whether sample sizes are appropriate to the grain size of the material being sampled.</i>	The sample sizes are considered to be appropriate for base metal sulphide mineralisation and associated geology.
Quality of assay data and laboratory tests	<i>The nature, quality and appropriateness of the assaying and laboratory procedures used and whether the technique is considered partial or total.</i>	Diamond core samples are analysed for Au, Pt and Pd using a 40g lead collection fire assay; for Rh, Ru, Os, Ir using a 25g nickel sulphide collection fire assay; and for Ag, Al, As, Bi, Ca, Cd, Co, Cr, Fe, K, Li, Mg, Mn, Mo, Nb, Ni, P, Pb, S, Sb, Sn, Te, Ti, V, W, Zn using a four acid digest and ICP-AES or MS finish. The assay method and detection limits are appropriate for analysis of the elements required.

Criteria	JORC Code explanation	Commentary
	<i>For geophysical tools, spectrometers, handheld XRF instruments, etc, the parameters used in determining the analysis including instrument make and model, reading times, calibrations factors applied and their derivation, etc.</i>	<p>A handheld XRF instrument (Olympus Innov-X Spectrum Analyser) is used to systematically analyse the drill core onsite. One reading is taken per meter, however for any samples with matrix or massive sulphide mineralisation then five to ten samples are taken at set intervals per meter. The instruments are serviced and calibrated at least once a year. Field calibration of the XRF instrument using standards is periodically performed.</p> <p>The handheld XRF results are only used for preliminary assessment and reporting of element compositions, prior to the receipt of assay results from the certified laboratory.</p> <p>The MLEM survey will be conducted using 200x200m loops to generate 100 amps, with a base frequency of 0.5Hz. Line spacing is typically 200m and station spacing typically 100m. Survey will use a fluxgate sensor.</p>
	<i>Nature of quality control procedures adopted (eg standards, blanks, duplicates, external laboratory checks) and whether acceptable levels of accuracy (i.e. lack of bias) and precision have been established.</i>	<p>Laboratory QAQC involves the use of internal lab standards using certified reference material (CRMs), blanks and pulp duplicates as part of in house procedures. The Company also submits a suite of CRMs, blanks and selects appropriate samples for duplicates.</p> <p>Sample preparation checks for fineness are performed by the laboratory to ensure the grind size of 90% passing 75µm is being attained.</p>
Verification of sampling and assaying	<i>The verification of significant intersections by either independent or alternative company personnel.</i>	Significant intersections are verified by the Exploration Manager of St George Mining.
	<i>The use of twinned holes.</i>	No twin holes are planned in the current drill program.
	<i>Documentation of primary data, data entry procedures, data verification, data storage (physical and electronic) protocols.</i>	Primary data is captured onto a laptop using acQuire software and includes geological logging, sample data and QA/QC information. This data, together with the assay data, is entered into the St George Mining central SQL database which is managed by external consultants.
	<i>Discuss any adjustment to assay data.</i>	No adjustments or calibrations will be made to any primary assay data reported.
Location of data points	<i>Accuracy and quality of surveys used to locate drill holes (collar and down-hole surveys), trenches, mine workings and other locations used in Mineral Resource estimation.</i>	<p>Drill holes have been located and pegged using a DGPS system with an expected accuracy of +/-0.05mmm for easting, northing and elevation.</p> <p>Downhole surveys are conducted using a single shot camera approximately every 30m during drilling to record and monitor deviations of the hole from the planned dip and azimuth. Post-drilling downhole gyroscopic surveys will be conducted, which provide much more accurate survey results.</p>
	<i>Specification of the grid system used.</i>	The grid system used at the Mt Alexander project is GDA94 (MGA), zone 51.
	<i>Quality and adequacy of topographic control.</i>	Elevation data has been acquired using DGPS surveying at individual collar locations and entered into the central database. A topographic surface has been created using this elevation data.
Data spacing and distribution	<i>Data spacing for reporting of Exploration Results.</i>	<p>The diamond drill program is testing modelled EM conductors and geological criteria for massive nickel-copper-PGE sulphide mineralisation. The spacing and distribution of the drill holes is appropriate to test the defined targets.</p> <p>The MLEM survey will be conducted on a 200m line spacing with 100m stations. If an anomaly is detected, then infill surveys will typically use 100m line spacing with 50m stations.</p>

Criteria	JORC Code explanation	Commentary
	<i>Whether the data spacing and distribution is sufficient to establish the degree of geological and grade continuity appropriate for the Mineral Resource and Ore Reserve estimation procedure(s) and classifications applied.</i>	The completed drilling at Cathedrals, Stricklands and Investigators is not sufficient to establish the degree of geological and grade continuity to support the definition of Mineral Resource and Reserves and the classifications applied under the 2012 JORC code.
	<i>Whether sample compositing has been applied.</i>	No compositing has been applied to the exploration results.
Orientation of data in relation to geological structure	<i>Whether the orientation of sampling achieves unbiased sampling of possible structures and the extent to which this is known, considering the deposit type.</i>	Drill holes are planned as perpendicular as possible to the target EM plates to approximate true width. Most of the ultramafic units in the Cathedrals Belt dip shallow to the north and where possible drill holes have been planned to intersect perpendicular to dip. The orientation of key structures may be locally variable.
	<i>If the relationship between the drilling orientation and the orientation of key mineralised structures is considered to have introduced a sampling bias, this should be assessed and reported if material.</i>	No orientation based sampling bias has been identified in the data to date.
Sample security	<i>The measures taken to ensure sample security.</i>	Chain of custody is managed by St George Mining. Core samples are stored in the secure facilities at Bureau Veritas laboratory in Perth. Transportation of core is managed by St George contractors and Bureau Veritas and actively track monitored.
Audits or reviews	<i>The results of any audits or reviews of sampling techniques and data.</i>	No audits or reviews have been conducted at this stage.

Section 2 Reporting of Exploration Results

Criteria	JORC Code explanation	Commentary
Mineral Tenement and Land Status	<p><i>Type, name/reference number, location and ownership including agreements or material issues with third parties including joint ventures, partnerships, overriding royalties, native title interests, historical sites, wilderness or national park and environmental settings.</i></p> <p><i>The security of the tenure held at the time of reporting along with any known impediments to obtaining a licence to operate in the area.</i></p>	<p>The Mt Alexander Project is comprised of four granted Exploration Licences (E29/638, E29/548, E29/954 and E29/962). Tenement E29/638 is held in Joint Venture between St George (75% interest) and Western Areas (25% interest). E29/638 and E29/548 are also subject to a royalty in favour of a third party that is outlined in the ASX Release dated 17 December 2015 (as regards E29/638) and the ASX release dated 18 September 2015 (as regards E29/548).</p> <p>No environmentally sensitive sites have been identified on the tenements. A registered Heritage site known as Willsmore 1 (DAA identification 3087) straddles tenements E29/548 and E29/638. All four tenements are in good standing and no known impediments exist.</p>
Exploration Done by Other Parties	<i>Acknowledgment and appraisal of exploration by other parties.</i>	<p>Exploration on tenements E29/638 and E29/962 has been largely for komatiite-hosted nickel sulphides in the Mt Alexander Greenstone Belt. Exploration in the northern section of E29/638 (Cathedrals Prospect) and also limited exploration on E29/548 has been for komatiite-hosted Ni-Cu sulphides in granite terrane. No previous exploration has been identified on E29/954.</p> <p>The target lithological unit in the Mt Alexander Greenstone belt has historically been the Central Ultramafic Unit, which has been explored by a number of parties, most recently by Nickel West. High grade nickel-copper sulphides were discovered at the Mt Alexander Project in 2008. Drilling was completed to test co-incident electromagnetic (EM) and magnetic anomalies associated with nickel-PGE enriched gossans in the northern section of current tenement E29/638. The drilling identified high grade nickel-copper mineralisation in granite-hosted ultramafic units and the discovery was named the Cathedrals Prospect. The tenements remain underexplored.</p>

Criteria	JORC Code explanation	Commentary
Geology	<i>Deposit type, geological setting and style of mineralisation</i>	The Mt Alexander Project is at the northern end of a western bifurcation of the Mt Ida Greenstones. The greenstones are bound to the west by the Ida Fault, a significant Craton-scale structure that marks the boundary between the Kalgoorlie Terrane (and Eastern Goldfields Superterrane) to the east and the Youanmi Terrane to the west. The Mt Alexander Project is prospective for further high-grade komatiite-hosted nickel-copper-PGE mineralisation (both greenstone and granite hosted) and also precious metal mineralisation (i.e. orogenic gold) that is typified elsewhere in the Yilgarn Craton.
Drill hole information	<i>A summary of all information material to the understanding of the exploration results including tabulation of the following information for all Material drill holes:</i> <ul style="list-style-type: none"> • Easting and northing of the drill hole collar • Elevation or RL (Reduced Level – elevation above sea level in meters) of the drill hole collar • Dip and azimuth of the hole • Down hole length and interception depth • Hole length 	Drill hole information is shown in Table 1 in the body of the release.
Data aggregation methods	<i>In reporting Exploration Results, weighting averaging techniques, maximum and/or minimum grade truncations (e.g. cutting of high grades) and cut-off grades are usually Material and should be stated.</i>	Reported assay intersections are length and density weighted. Significant intersections are determined using both qualitative (i.e. geological logging) and quantitative (i.e. lower cut-off) methods. For massive sulphide intersections, the nominal lower cut-off is 2% for either nickel or copper. For disseminated, blebby and matrix sulphide intersections the nominal lower cut-off for nickel is 0.3%.
	<i>Where aggregated intercepts incorporate short lengths of high grade results and longer lengths of low grade results, the procedure used for such aggregation should be stated and some typical examples of such aggregations should be shown in detail.</i>	Any high-grade sulphide intervals internal to broader zones of sulphide mineralisation are reported as <i>included</i> intervals. For example, any heavy disseminated or matrix sulphides with >1% nickel or copper directly on contact with massive sulphide mineralisation are grouped with the massive sulphides for calculating significant intersections and the massive sulphide mineralisation is reported as an <i>including</i> intersection.
	<i>The assumptions used for any reporting of metal equivalent values should be clearly stated.</i>	No metal equivalent values have yet been used for reporting exploration results.
Relationship between mineralisation widths and intercept lengths	<i>These relationships are particularly important in the reporting of exploration results.</i> <i>If the geometry of the mineralisation with respect to the drill hole angle is known, its nature should be reported. If it is not known and only the down hole lengths are reported, there should be a clear statement to this effect (e.g. down hole length, true width not known).</i>	Assay intersections are reported as down hole lengths. Drill holes were planned as perpendicular as possible to intersect the target EM plates so downhole lengths are interpreted to be near true width. Results from recent and ongoing drill programs will be reviewed further to confirm the relationship between downhole lengths and true widths.
Diagrams	<i>Appropriate maps and sections (with scales) and tabulations of intercepts should be included for any significant discovery being reported. These should include, but not be limited to a plane view of drill hole collar locations and appropriate sectional views.</i>	A relevant map of the Investigators Prospect and also the Cathedrals Belt is shown in the body of the release.
Balanced Reporting	<i>Where comprehensive reporting of all Exploration Results is not practical, representative reporting of both low and high grades and/or widths should be practiced to avoid misleading reporting Exploration Results.</i>	The exploration results reported are representative of the mineralisation style with grades and/or widths reported in a consistent manner.

Criteria	JORC Code explanation	Commentary
Other substantive exploration data	<i>Other exploration data, if meaningful and material, should be reported including (but not limited to): geological observation; geophysical survey results; geochemical survey results; bulk samples – size and method of treatment; metallurgical test results; bulk density, groundwater, geotechnical and rock characteristics; potential deleterious or contaminating substances.</i>	All material or meaningful data collected has been reported.
Further Work	<p><i>The nature and scale of planned further work (e.g. tests for lateral extensions or depth extensions or large – scale step – out drilling).</i></p> <p><i>Diagrams clearly highlighting the areas of possible extensions, including the main geological interpretations and future drilling areas, provided this information is not commercially sensitive.</i></p>	Further exploration includes assessment of the results of the current diamond drill program including any additional drill holes, and ongoing reconnaissance and infill surface moving loop and fixed loop EM surveys.