

28 October 2013

ST GEORGE COMMENCES EM SURVEYS AT NICKEL TARGETS

HIGHLIGHTS

- Fixed loop EM survey has commenced at Cambridge
- Moving loop EM survey over other targets due to commence this week
- Test drilling scheduled for this year

FLEM SURVEY COMMENCED

St George Mining Limited (ASX: **SGQ**) (“St George Mining” or “the Company”) is pleased to announce that a fixed loop electro-magnetic (FLEM) survey has commenced over three target areas at the Cambridge ultramafic (dunite) body – part of the Company’s 100% owned Cambridge Nickel Project, which is located at its East Laverton Property in the North Eastern Goldfields region of Western Australia.

The new, powerful FLEM survey is designed to further assess three EM anomalies at Cambridge which have been detected from the results of a less powerful historical moving loop transient electro-magnetic (MLEM) survey.

All three anomalies have the potential to have a bedrock source that may represent massive sulphides. The anomalies are each located proximal to the basal contact of the Cambridge dunite body – the target zone for accumulation of massive sulphides.

The FLEM survey is being arranged and processed by Newexco, widely recognised as a leading consultant in the exploration of magmatic nickel sulphide deposits where electromagnetic interpretation is a primary exploration tool.

Figure 1 illustrates the location of the three areas to be tested by the FLEM survey.

Results of the survey will enable the design of a highly focussed and cost effective drill programme for all targets that warrant testing. St George is in a position to fast track test drilling, which is scheduled for next month.

SPECIFICATIONS OF THE FLEM SURVEY

The historical MLEM survey used 100 m loops and 200 m line spacing. It had limited depth penetration and was designed to test relatively shallow occurrences of mineralisation.

The new FLEM survey will use 400m x 400m fixed loops and will generate nearly 5 times the energy of the historical survey. This greater depth and lateral penetration will provide more detailed information which will allow a better assessment of the EM anomalies.

MLEM SURVEY OVER OTHER NICKEL TARGETS

A powerful MLEM is being designed to cover other prospective areas of the Cambridge dunite body which are not covered by the FLEM survey. The MLEM survey will also be completed over approximately 12 km of strike of the Stella Range Ultramafic Belt.

The new MLEM survey is scheduled to commence later this week. A further announcement with details of the MLEM survey will be issued shortly.

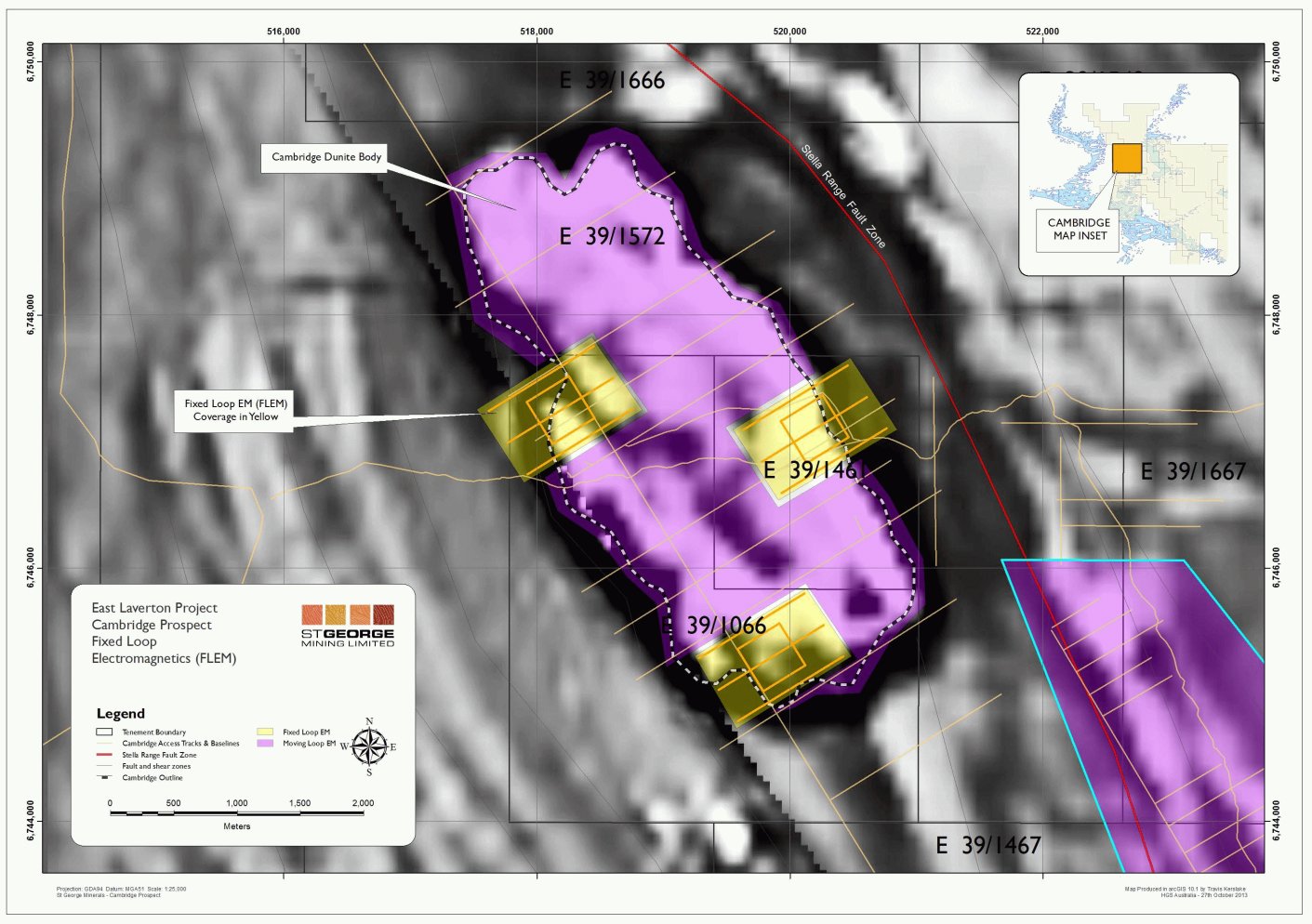


Figure 1 – a map of the Cambridge dunite body with the three FLEM survey areas highlighted

For further information, please contact:

John Prineas

Executive Chairman
St George Mining Limited
(+61) 411 421 253

John.prineas@stgm.com.au

www.stgeorgemining.com.au

Colin Hay

Professional Public Relations
(+61) 08 9388 0944 mob 0404 683 355

colin.hay@ppr.com.au

St George Mining Limited ACN 139 308 973

Level 1, 115 Cambridge Street, PO Box 1305, West Leederville WA 6007
Phone + 61 8 9322 6600 Facsimile + 61 8 9322 6610

COMPETENT PERSON STATEMENT:

The information in this announcement that relates to Exploration Results and Mineral Resources is based on information compiled by Timothy Hronsky. Mr Hronsky is a member of the Australasian Institute of Mining and Metallurgy has sufficient experience, which is relevant to the style of mineralisation and type of deposit under consideration and to the activity, which he is undertaking. This qualifies Mr Hronsky as a “Competent Person” as defined in the 2004 edition of the ‘Australasian Code for Reporting of Exploration Results, Mineral Resources and Ore Reserves’. Mr Hronsky consents to the inclusion of information in this announcement in the form and context in which it appears.